

TECHNICAL MANUAL

**GENERAL SUPPORT MAINTENANCE REPAIR PARTS
AND SPECIAL TOOLS LISTS
FOR
TEST SET, BENCH FLIGHT CONTROL SET AN/ASM-417
(NSN 4920-00-176-4112)**

HEADQUARTERS, DEPARTMENT OF THE ARMY

13 DECEMBER 1980

**GENERAL SUPPORT MAINTENANCE REPAIR PARTS AND SPECIAL TOOLS LISTS
FOR
TEST SET, BENCH FLIGHT CONTROL SET AN/ASM-417
(NSN 4920-00-176-4112)
Current as of 30 April 1980**

REPORTING ERRORS AND RECOMMENDING IMPROVEMENTS

You can help improve this manual. If you find any mistakes or if you know of a way to improve the procedures, please let us know. Mail your letter, DA Form 2028 (Recommended Changes to Publications and Blank Forms), or DA Form 2028-2 located in back of this manual direct to Commander, US Army Communications and Electronics Materiel Readiness Command, ATTN: DRSEL-ME-MQ, Fort Monmouth, NJ 07703. In either case a reply will be furnished direct to you.

Table of Contents

	Page	Illus Figure
SECTION I. Introduction	1	
II. Repair parts list	5	
GROUP 00 Test Set, Bench Flight Control Set AN/ASM-417	5	1
01 Test Unit Group, Bench Flight Control Set OQ-93/ASM-417	7	2
0101 Case, Test Set CY-6961/ASM-417	9	3
0102 Panel, Test Electrical TS-3030/ASM-417	13	4
Panel, Test Electrical TS-3030/ASM-417, Synchro Assembly	17	5
0103 Adapter, Test MX-8837/ASM-417	19	6
Adapter, Test MX-8837/ASM-417, Wiring Assembly	21	7
Adapter, Test MX-8837/ASM-417, Board Assembly	23	8
02 Accessory Group, Bench Flight Control Set OQ-94/ASM-417	25	9
0201 Case, Test Set CY-6962/ASM-417	27	10
0202 Test Mount, Control Panel MT-3969/ASM-329	29	11
0203 Adapter, Test MX-8838/ASM-417	33	12
Adapter, Test MX-8838/ASM-417, Wiring Assembly	37	13
Adapter, Test MX-8838/ASM-417, Board Assemblies	39	14
0204 Adapter, Test MX-8840/ASM-417	43	15
Adapter, Test MX-8840/ASM-417, Board Assembly (TB201)	47	16
Adapter, Test MX-8840/ASM-417, Wiring Assembly	49	17
Adapter, Test MX-8840/ASM-417, Synchro Assembly	51	18
0205 Adapter, Test MX-8839/ASM-417	55	19
Adapter, Test MX-8839/ASM-417, Wiring Assembly	59	20
Adapter, Test MX-8839/ASM-417, Board Assembly, 6470-90184-041	61	21
Adapter, Test MX-8839/ASM-417, Board Assembly, 6470-90184-042	63	22
03 Cable Assembly, Special Purpose, Electrical Branched CX-12495/ASM-417 (W-1)	65	23
04 Cable Assembly, Special Purpose, Electrical CX-12496/U (W-2)	67	24
05 Cable Assembly, Special Purpose, Electrical CX-12497/U (W-3)	69	25
06 Cable Assembly, Special Purpose, Electrical CX-12498/U (W-4)	71	26
07 Cable Assembly, Special Purpose, Electrical CX-12499/U (W-5)	73	27
08 Cable Assembly, Special Purpose, Electrical CX-12500/U (W-6)	75	28
09 Cable Assembly, Special Purpose, Electrical CX-12501/U (W-7)	77	29
10 Cable Assembly, Special Purpose, Electrical CX-12502/ASM-417 (W-8)	79	30
11 Cable Assembly, Special Purpose, Electrical CX-12503/U (W-9)	81	31
12 Cable Assembly, Special Purpose, Electrical CX-12504/ASM-417 (W-10)	83	32
13 Cable Assembly, Special Purpose, Electrical CX-12505/U (W-II)	85	33
14 Cable Assembly, Special Purpose, Electrical CX-12506/U (W-12)	87	34
15 Cable Assembly, Special Purpose, Electrical CX-12507/U (W-13)	89	35
16 Cable Assembly, Special Purpose, Electrical CX-12630/U (W-14)	91	36
SECTION III. Special Tools List (Not applicable)		
IV. National Stock Number and Part Number Index	92	

* This manual supersedes TM 114920-294-40P-1, 15 July 1974.

**SECTION I
INTRODUCTION**

1. Scope

This manual lists spares and repair parts; special tools; special test, measurement, and diagnostic equipment (TMDE), and other special support equipment required for performance of general support maintenance of the AN/ASM-417. It authorizes the requisitioning and issue of spares and repair parts as indicated by the source and maintenance codes.

2. General

This Repair Parts and Special Tools List is divided into the following sections:

a. Section II. Repair Parts List. A list of spares and repair parts authorized for use in the performance of maintenance. The list also includes parts which must be removed for replacement of the authorized parts. Parts lists are composed of functional groups in numeric sequence, with the parts in each group listed in figure and item number sequence.

b. Section III. Special Tools List. Not applicable.

c. Section IV. National Stock Number and Part Number Index. A list, in National item identification number (NIIN) sequence, of all National stock numbers (NSN) appearing in the listings, followed by a list, in alphameric sequence, of all part numbers appearing in the listings. National stock numbers and part numbers are cross-referenced to each illustration figure and item number appearance.

3. Explanation of Columns

a. Illustration. This column is divided as follows:

(1) Figure number. Indicates the figure number of the illustration on which the item is shown.

(2) Item number. The number used to identify item called out in the illustration.

b. Source, Maintenance, and Recoverability (SMR) Codes.

(1) Source code. Source codes indicate the manner of acquiring support items for maintenance, repair, or overhaul of end items. Source codes are entered in the first and second positions of the Uniform SMR Code for-mat as follows:

Code	Definition
PA -	Item procured and stocked for anticipated or known usage.
XD-	A support item that is not stocked. When required, item will be procured through normal supply channels.

NOTE

Cannibalization or salvage may be used as a source of supply for any items source coded above except those coded XA and aircraft sup-port items as restricted by AR 700-42.

(2) Maintenance code. Maintenance codes are assigned to indicate the levels of maintenance

authorized to USE and REPAIR support items. The maintenance codes are entered in the third and fourth positions of the Uniform SMR Code format as follows:

(a) The maintenance code entered in the third position will indicate the lowest maintenance level authorized to remove, replace, and use the support item. The maintenance code entered in the third position will indicate one of the following levels of maintenance:

Code	Application/Explanation
O	-Support item is removed, replaced, used at the organizational level.
H	-Support item is removed, replaced, used at the general support level.

(b) The maintenance code entered in the fourth position indicates whether the item is to be repaired and identifies the lowest maintenance level with the capability to perform complete repair (i.e., all authorized maintenance functions). This position will contain one of the following maintenance codes:

Code	Application/Explanation
H	-The lowest maintenance level capable of complete repair of the support item is the general support level.
Z	-Nonreparable. No repair is authorized.

(3) Recoverability code. Recoverability codes are assigned to support items to indicate the disposition action on unserviceable items. The recoverability code is entered in the fifth position of the Uniform SMR Code format as follows:

Recoverability codes	Definition
Z	-Nonreparable item. When unserviceable, condemn and dispose at the level indicated in position 3.
H	-Reparable item. When uneconomically repairable, condemn and dispose at the general support level.
D	-Reparable item. When beyond lower level repair capability, return to depot. Condemnation and disposal not authorized below depot level.
A	-Item requires special handling or condemnation procedures because of specific reasons (i.e., precious metal content, high dollar value, critical material or hazardous material). Refer to appropriate manuals/directives for specific instructions.

c. National Stock Number. Indicates the National stock number assigned to the item and will be used for requisitioning purposes.

d. Part Number. Indicates the primary number used by the manufacturer (individual, company, firm, corporation, or Government activity), which controls the design

and characteristics of the item by means of its engineering drawings, specifications, standards, and inspection requirements to identify an item or range of items.

NOTE

When a stock numbered item is requisitioned, the repair part received may have a different part number than the part being replaced.

e. Federal Supply Code for Manufacturer (FSCM). The FSCM is a 5-digit numeric code listed in SB 708-42 which is used to identify the manufacturer, distributor, or Government agency, etc.

f Description. Indicates the Federal item name and, if required, a minimum description to identify the item.

g. Unit of Measure (UIM). Indicates the standard of the basic quantity of the listed item as used in performing the actual maintenance function. This measure is expressed by a two-character alphabetical abbreviation (e.g., ea, in, pr, etc). When the unit of measure differs from the unit of issue, the lowest unit of issue that will satisfy the required units of measure will be requisitioned.

h. Quantity Incorporated in Unit. Indicates the quantity of the item used in the breakout shown on the illustration figure, which is prepared for a functional group, subfunctional group, or an assembly. A "V" appearing in this column in lieu of a quantity indicates that no specific quantity is applicable, (e.g., shims, spacers, etc).

4. Special Information

The following publications pertain to the AN/ASM-417 and its components:

TM 11-4920-294-12-1, Test Set, Bench, Flight Control

Set AN/ASM-417

TM 11-4920-294-20P-1, Test Set, Bench, Flight Control

Set AN/ASM-417

TM 11-4920-294-45-1, Test Set, Bench, Flight Control

Set AN/ASM-417

5. How to Locate" Repair Parts

a. When National stock number or part number is unknown.

(1) First. Using the table of contents, determine the functional group within which the item belongs. This is necessary since illustrations are prepared for functional groups and listings are divided into the same groups.

(2) Second. Find the illustration covering the functional group to which the item belongs.

(3) Third. Identify the item on the illustration and note the illustration figure and item number of the item.

(4) Fourth. Using the Repair Parts Listing, find the figure and item number noted on the illustration.

b. When National stock number or part number is known.

(1) First. Using the Index of National Stock Numbers and Part Numbers, find the pertinent National stock-number or part number. This index is in NIIN sequence followed by a list of part numbers in alphameric sequence cross-referenced to the illustration figure number an(item number.

(2) Second. After finding the figure and item number, locate the figure and item number in the repair part list.

6. Abbreviations

Not applicable.

(Next printed page is 4.1)

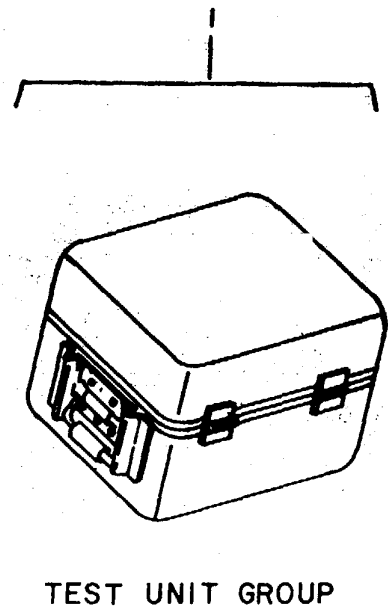
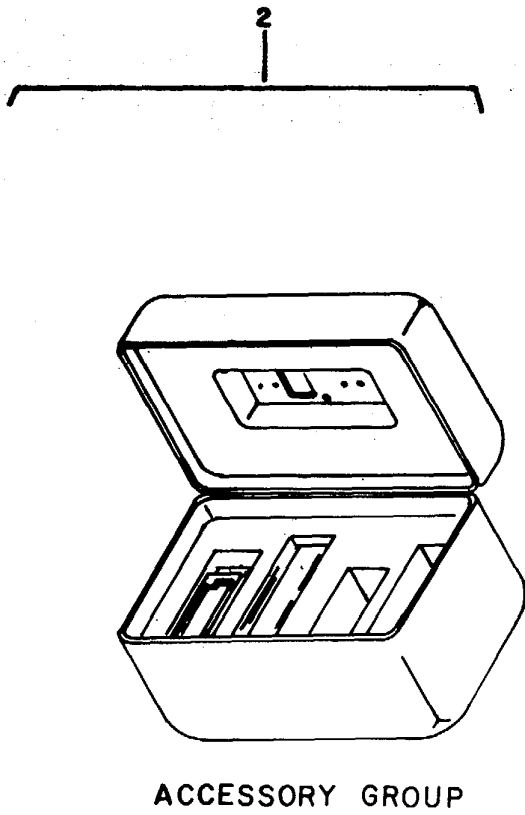
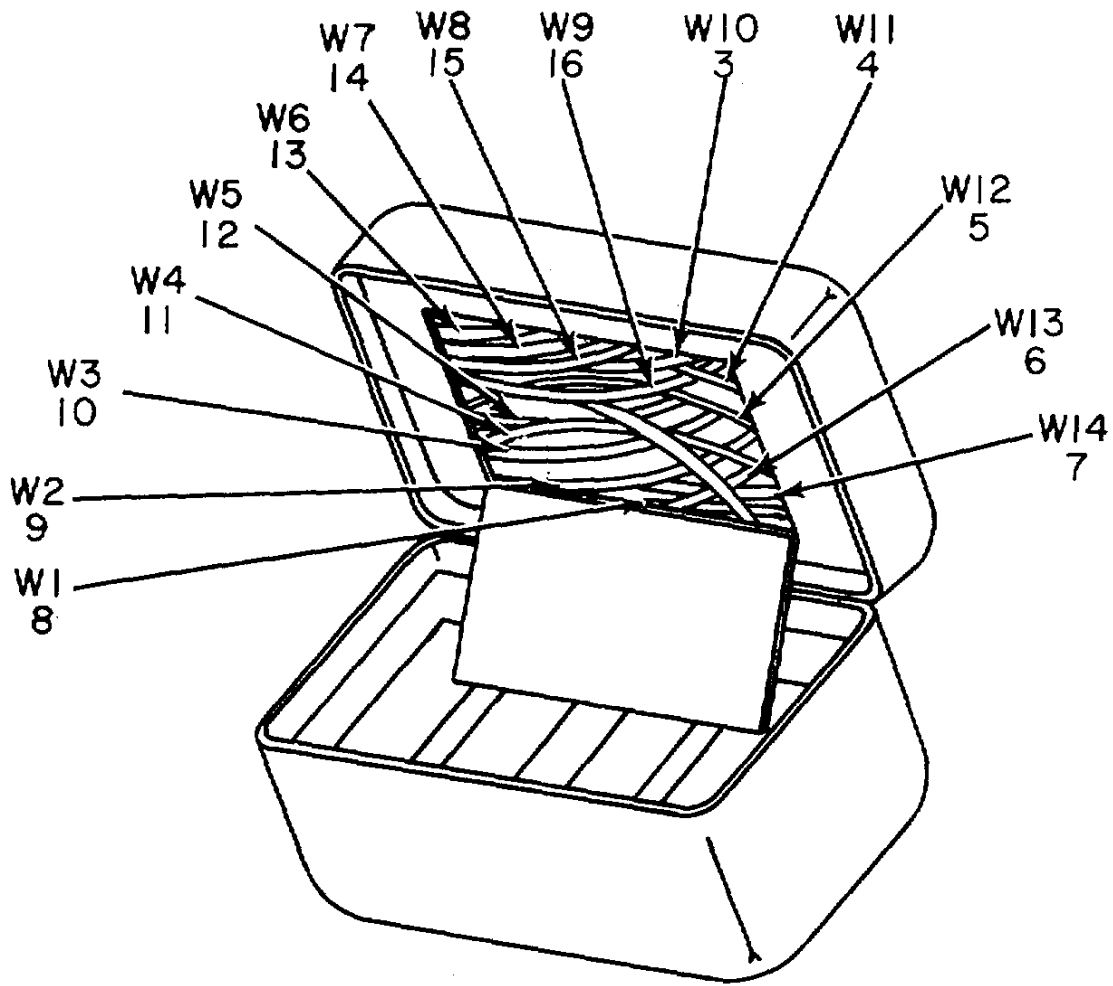


Figure 1. Test Set, Bench Flight Control Set AN/ASM-417 (Sheet 1 of 2).



CABLE ASSEMBLIES

EL6CZ002

Figure 1. Test Set, Bench Flight Control Set AN/ASM-417 (Sheet 2 of 2).

SECTION II

TM 11-4920-294-40P-1

(1) ILLUSTRATION		(2)	(3)	(4)	(5)	(6) DESCRIPTION	(7)	(8)
(a) FIG NO.	(b) ITEM NO.	SMR CODE	NATIONAL STOCK NUMBER	PART NUMBER	FSCM	USABLE ON CODE	U/M	QTY INC IN UNIT
						GROUP 00 TEST SET, BENCH FLIGHT CONTROL SET AN/ASM-417		
1	1	PAOHH	6625-00-407-7130	0Q-93/ASM-417	80058	FLIGHT CONTROL SET	EA	1
1	2	XDOHH		0Q-94/ASM-417	80058	ACCESSORY GROUP	EA	1
1	3	PAOHH	6625-00-760-6136	CX-12504/ASN-417	80058	CABLE ASSY, SP, ELEC	EA	1
1	4	PAOHH	6625-00-760-6139	CX-12505/U	80058	CABLE ASSY, SP, ELEC	EA	1
1	5	PAOHH	6625-00-760-6141	CX-12506/U	80058	CABLE ASSY, SP, ELEC	EA	1
1	6	PAOHH	5995-00-449-0716	CX-12507/U	80058	CABLE ASSY, SP, ELEC	EA	1
1	7	XDOHH		CX-12630/U	80058	CABLE ASSY, SP, ELEC	EA	1
1	8	PAOHH	6615-00-465-1746	CX-12495/ASM-417	80058	CABLE ASSY SP ELEC	EA	1
1	9	PAOHH	6625-00-760-6118	CX-1Z496/U	80058	CABLE ASSY, SP, ELEC	EA	1
1	10	PAOHH	6625-00-760-6125	CX-12497/U	80058	CABLE ASSY, SP, ELEC	EA	1
1	11	PAOHH	5995-00-235-5050	CX-12498/U	80058	CABLE ASSY, SP, ELEC	EA	1
1	12	PAOHH	5995-00-235-5065	CX-12499/U	80058	CABLE ASSY, SP, ELEC	EA	1
1	13	PAOHH	5995-00-235-5055	CX-12500/U	80058	CABLE ASSY, SP, ELEC	EA	1
1	14	PAOHH	6625-00-760-6129	CX-1250i/U	80058	CABLE ASSY, SP, ELEC	EA	1
1	15	PAOHH	6625-00-760-6130	CX-12502/ASN-417	80058	CABLE ASSY, SP, ELEC	EA	1
1	16	PAOHH	6625-00-760-6135	CX-12503/U	80058	CABLE ASSY, SP, ELEC	EA	1
					5			

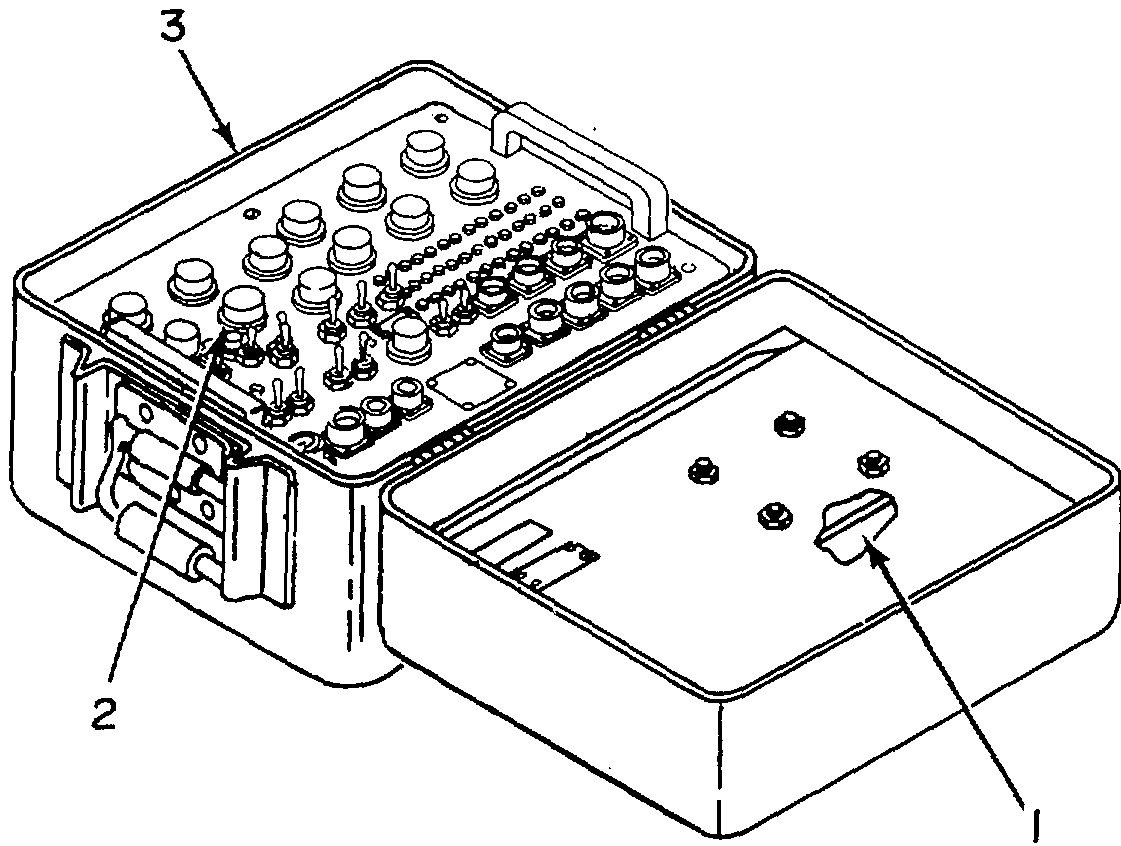
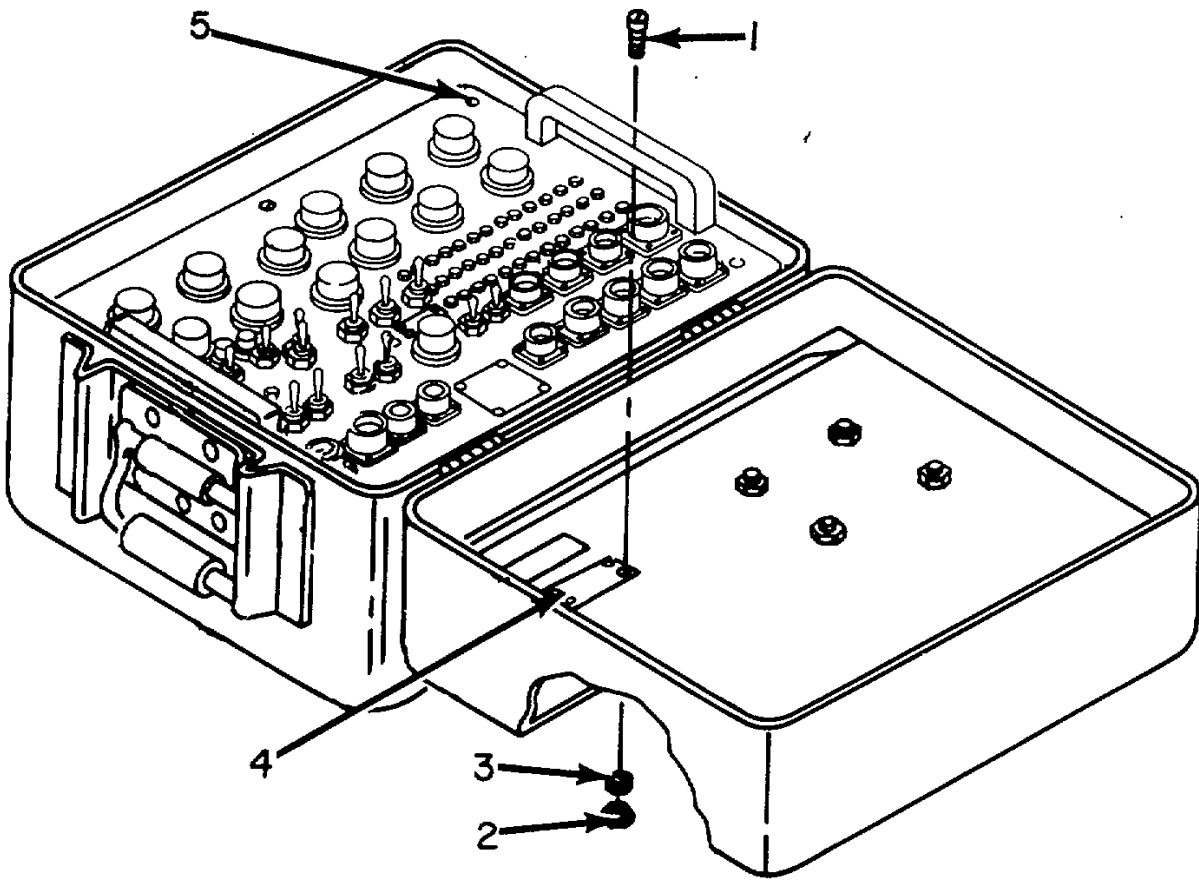


Figure 2. Test Unit Group, Bench Flight Control Set OQ-93/ASM-417.

SECTION II

TM 11-4920-294-40P-1

(1) ILLUSTRATION		(2)	(3)	(4)	(5)	(6)	(7)	(8)		
(a) FIG NO.	(b) ITEM NO.	SMR CODE	NATIONAL STOCK NUMBER	PART NUMBER	FSCM	DESCRIPTION USABLE ON CODE	U/M	QTY INC IN UNIT		
2	1	PAOHH	6625-00-197-6392	MX-883T/ASM-417	80058	GROUP 01 TEST UNIT GROUP, BENCH FLIGHT CONTROL SET OQ-93/AS, -417 ADAPTER, TEST PANEL, TEST, ELEC CASE, TEST SET.....	EA	1		
2	2	XDOHH		TS-3030/ASM-417	80058				EA	1
2	3	X0HHIH		CY-6961/ASM-417	80058				EA	1
					7					



EL6CZ004

Figure 3. Case, Test Set CY-6961/ASM-417.

SECTION II

TM 11-4920-294-40P-1

(1) ILLUSTRATION		(2)	(3)	(4)	(5)	(6) DESCRIPTION	(7)	(8)
(a) FIG NO.	(b) ITEM NO.	SMR CODE	NATIONAL STOCK NUMBER	PART NUMBER	FSCM	USABLE ON CODE	U/M	QTY INC IN UNIT
						GROUP 0101 CASE1 TEST SET CY-6961/ASM-417		
3	1	PAHZZ	5305-00-889-2998	MS35206-216	96906	SCREW, MACHINE.....	EA	8
3	2	PAHZZ	5310-00-811-6419	MS21042-04	96906	NUT, SELF-LOCKING, EX.....	EA	8
3	3	PAHZZ	5310-00-187-2408	AN960P4	88044	WASHER, FLAT.....	EA	8
3	4	XDHZZ	9905-00-138-5610	SS9064e023	78286	PLATE, IDENTIFICATION.....	EA	1
3	5	XDHZZ		SFSW8C10DB	12324	SCREW.....	EA	10
					9			

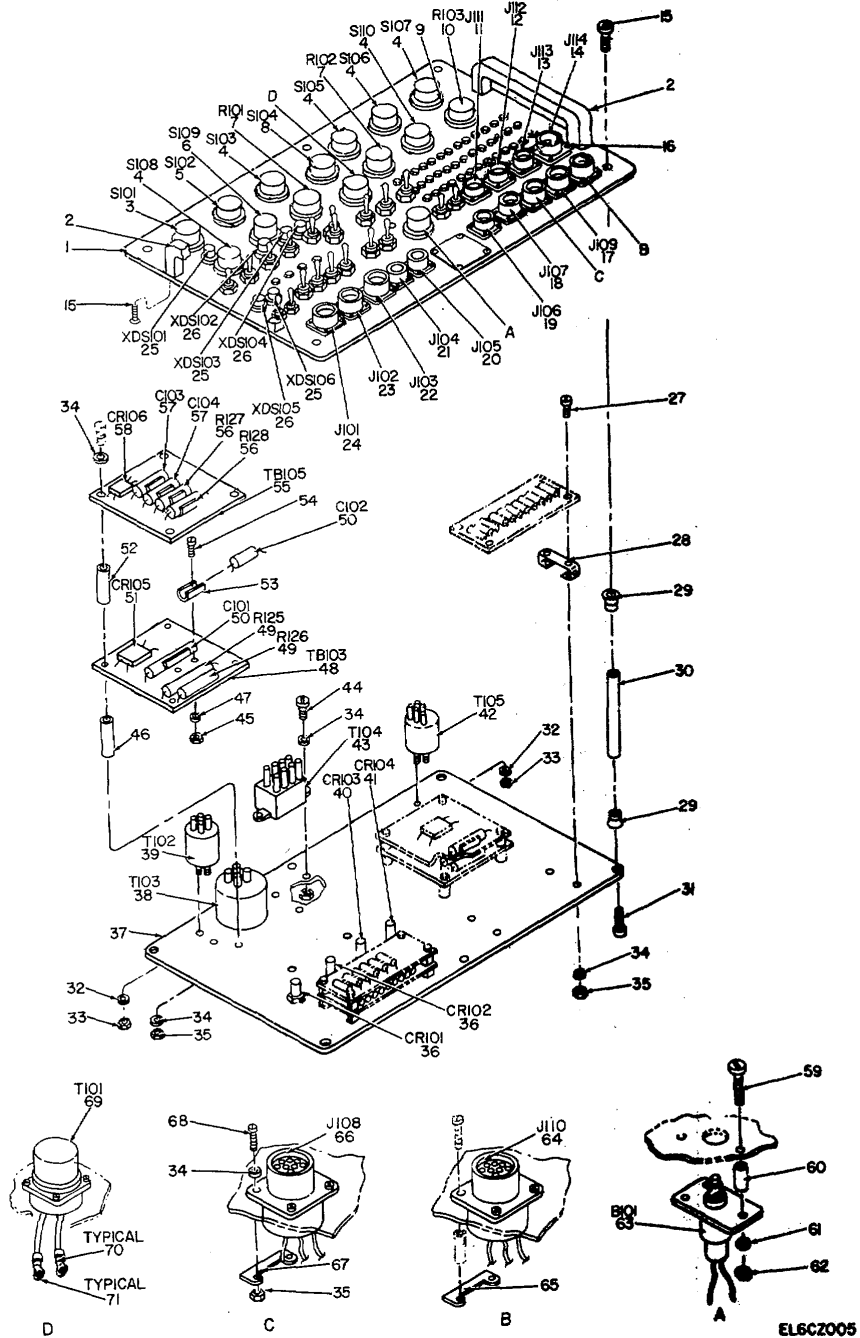


Figure 4. Panel, Test Electrical TS-3030/ASM-417 (Sheet 1 of 3).

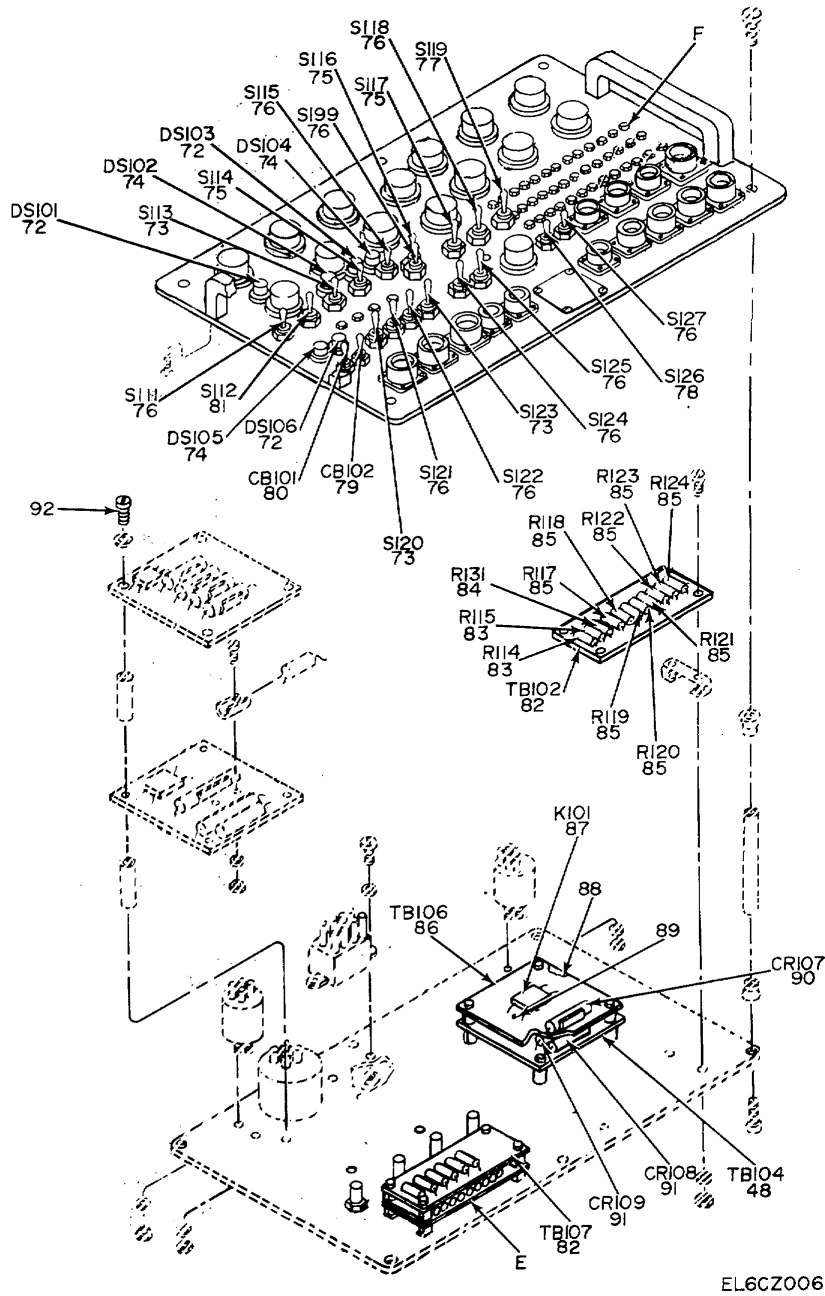
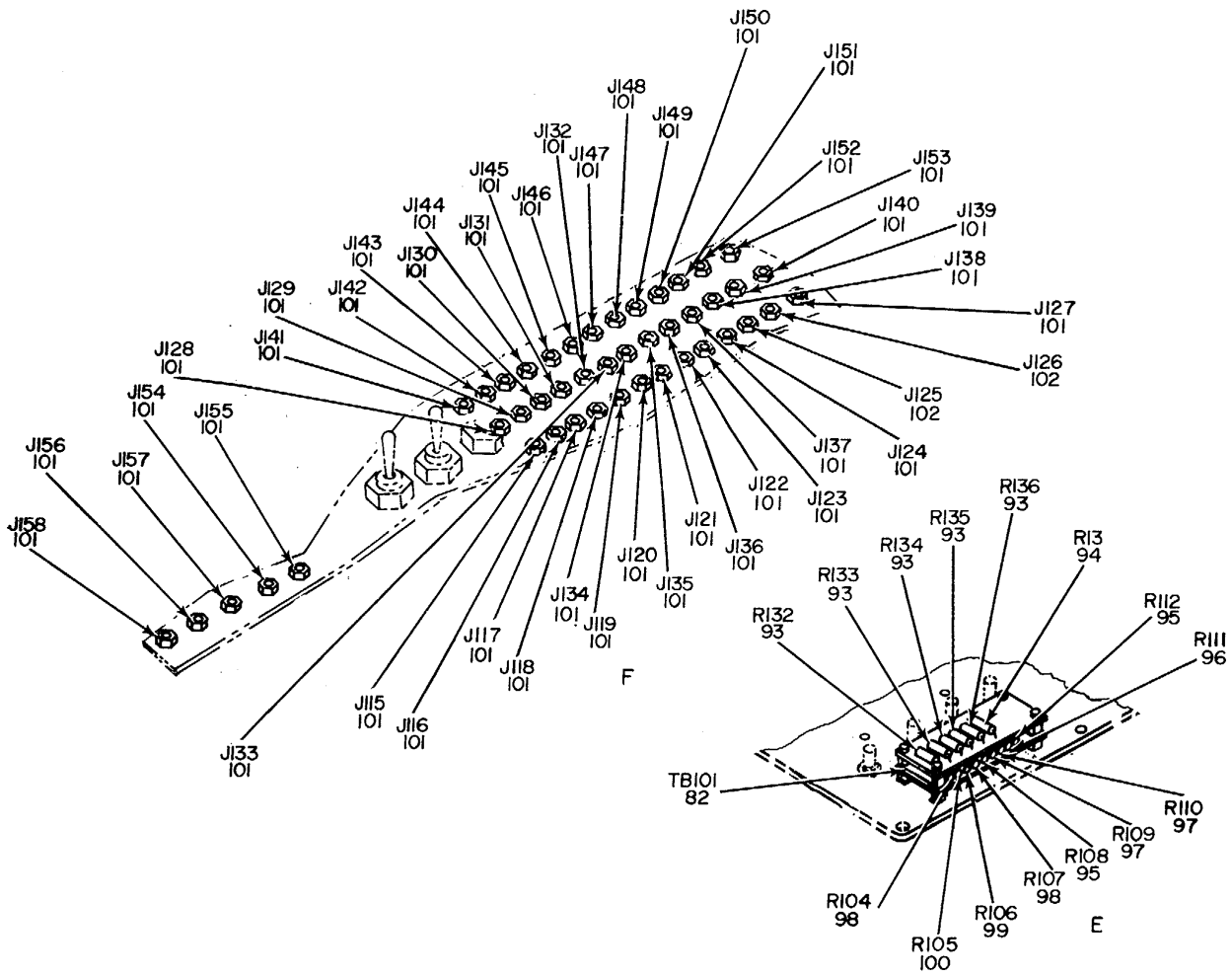


Figure 4. Panel, Test Electrical TS-3030/ASM-417 (Sheet 2 of 3).



EL6CZ007

Figure 4. Panel, Test Electrical TS-3030/ASM-417 (Sheet 3 of 3).

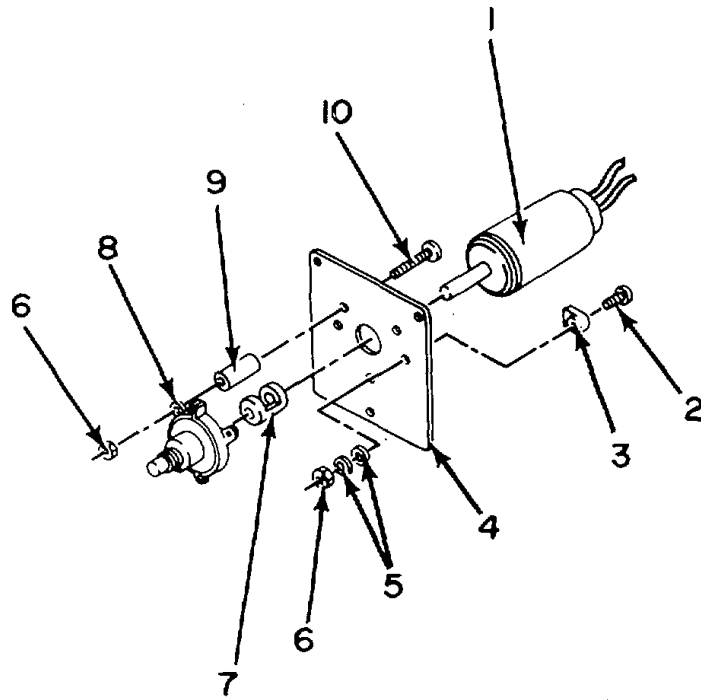
(1) ILLUSTRATION		(2)	(3)	(4)	(5)	(6) DESCRIPTION	(7)	(8)
(a) FIG NO.	(b) ITEM NO.	SMR CODE	NATIONAL STOCK NUMBER	PART NUMBER	FSCM	USABLE ON CODE	U/M	QTY INC IN UNIT
						GROUP 0102 PANEL, TEST ELECTRICAL TS-3030/ASN-417		
4	1	PAHZZ	6625-00-238-9405	6470-90155-101	78286	PANEL.....	EA	1
4	2	XDHZZ		FCA1	08730	HANDLE	EA	2
4	3	PAHZZ	5930-00-450-9725	56170-90143-6	78286	SWITCH, ROTARY	EA	1
4	4	XDHZZ		56170-90143-7	78286	SWITCH, ROTARY	EA	6
4	5	PAHZZ	5930-00-189-6579	6470-90167-042	78286	SWITCH, ROTARY	EA	1
4	6	XDHZZ		56170-90143-14	78286	SWITCH	EA	1
4	7	PAHZZ	5905-00-552-2859	RV4NAYS0202A	81349	RESISTOR, VARIABLE, N	EA	2
4	8	PAHZZ	5930-00-190-6941	6470-90167-041	78286	SWITCH, ROTARY	EA	1
4	9	PAOZZ	5355-00-918-4029	65700-90022-041	78286	KNOB	EA	15
4	10	PAHZZ	5905-00-428-8504	RV4NAYS0202A	81349	RESISTOR, VARIABLE	EA	1
4	11	XDHZZ		PT02SE12-8SX	77820	CONNECTOR, RCPT, EC.....	EA	1
4	12	PAHZZ	5935-00-923-3788	MS3122E16-26SY	96906	CONNECTOR, RECEPTACL	EA	1
4	13	PAHZZ	5935-00-901-0922	MS3122E16-26SW	96906	CONNECTOR, RECEPTACL	EA	1
4	14	PAHZZ	5935-00-764-4033	MS3122E24-615	96906	CONNECTOR, RECEPTACL	EA	1
4	15	PAHZZ	5305-00-063-3503	MS24693S50	96906	SCREW, MACHINE.....	EA	10
4	16	PAHZZ	5305-00-889-3001	MS35206-231 -	96906	SCREW, MACHINE	EA	4
4	17	PAHZZ	5935-00-946-1947	MS3122E18-32SW	96906	CONNECTOR, RECEPTACL	EA	1
4	18	XDHZZ		PTO2SE14-18S	77820	CONNECTOR, RCPT, ELEC.....	EA	1
4	19	PAHZZ	5935-00-717-3153	PTO2SE12-8SW	77820	CONNECTOR RECEPTACL.....	EA	1
4	20	PAHZZ	5935-00-887-6409	PTO2SE12-8S	77820	CONNECTOR, RECEPTACL	EA	1
4	21	PAHZZ	5935-00-988-5470	MS3122E10-6S	96906	CONNECTOR, RECEPTACL	EA	1
4	22	PAHZZ	5935-00-988-4231	MS3122E20-415	96906	CONNECTOR, RECEPTACL	EA	1
4	23	PAHZZ	5935-00-990-4558	MS3122E18-32S	96906	CONNECTOR, RECEPTACL	EA	1
4	24	PAHZZ	5935-00-539-4282	MS3102E18-20P	96906	CONNECTOR, RECEPTACL	EA	1
4	25	PAHZZ	6210-00-682-9833	MS25256-6	96906	LIGHT, INDICATOR	EA	3
4	26	PAHZZ	6210-00-808-8604	MS25257-4	96906	LIGHT, INDICATOR R	EA	3
4	27	PAHZZ	5305-00-984-4979	MS35206-222	96906	SCREW, MACHINE.....	EA	12
4	28	XDHZZ		S1047-01	78286	BR BRACKET.....	EA	6
4	29	PAHZZ	5365-00-954-0931	1989-1	71279	SPACER, STEPPED	EA	12
4	30	PAHZZ	5970-00-480-1321	8546A0832-18	06540	INSULATOR, ST ANDOFF	EA	6
4	31	XDHZZ		NK515-8R10	102615	SCREW, MACHINE	EA	6
4	32	PAHZZ	5310-00-184-8966	AN960PD8	88044	WASHER, FLAT	EA	7
4	33	PAHZZ	5310-00-807-1466	MSZ1042-08	96906	NUTSELF-LOCKING, EX	EA	7
4	34	PAHZZ	5310-00-181-2408	AN960PD4	88044	WASHER, FLAT	EA	88
4	35	PAHZZ	5310-00-811-6419	MS21042-04	96906	NUT, SELF-LOCKING, EX	EA	80
4	36	XDHZZ		1N29798	103877	SEMICONDUCTOR, DIODE	EA	2
4	37	XDHZZ		6470-90155-102	78286	CHASSIS.....	EA	1
4	38	PAHZZ	5950-00-931-6229	TW61742	02640	TRANSFORMER, POWER	EA	1

(1) ILLUSTRATION		(2)	(3)	(4)	(5)	(6) DESCRIPTION	(7)	(8)
(a) FIG NO.	(b) ITEM NO.	SMR CODE	NATIONAL STOCK NUMBER	PART NUMBER	FSCM	USABLE ON CODE	U/M	QTY INC IN UNIT
4	39	PAHZZ	5950-00-928-5528	TW61511	02640	TRANSFORMER, POWER	EA	1
4	40	XDHZZ		IN2974	03877	SEMICONDUCTOR, DIODE	EA	1
4	41	XDHZZ		IN2974R	03877	SEMICONDUCTOR, DIODE,	EA	1
4	42	PAHZZ	5950-00-172-1278	TW63271	02640	TRANSFORMER, POWER	EA	1
4	43	PAHZZ	5950-00-704-9794	M3074	00348	TRANSFORMER ER	EA	1
4	44	PAHZZ	5305-00-882998	MS35206-216	96906	SCREW, MACHINE	EA	14
4	45	PAHZZ	5310-00-058-1823	MS21042-02	96906	NUT, SELF-LOCKING, EX	EA	16
4	46	PAHZZ	5340-00-632-3102	NAS43DO-16	80205	SPACER	EA	8
4	47	PAHZZ	5330-00-183-4404	AN960P02	88044	WASHER, FLAT	EA	16
4	48	PAHHZ	6625-00-186-6138	6470-90156-043	78286	COMPONENT BOARD ASSY	EA	2
4	49	PAHZZ	5905-00-975-1144	RW67V510	81349	RESISTOR, FIXED, WIRE	EA	2
4	50	XDHZZ	CL21BN7OOSPE5		81349	CAPACITOR, FIX	EA	2
4	51	PAHZZ	5961-00-107-6050	MDA942-3	04713	BRIDGE, RECTIFIER	EA	1
4	52	PAHZZ	5340-00-542-0905	NAS430DO-48	80205	SPACER	EA	8
4	53	XDHZZ		6002-52A	91506	CLIP	EA	6
4	54	PAHZZ	5305-00-988-1167	MS35206-204	96906	SCREW, MACHINE	EA	16
4	55	PANDA	5940-00-441-9404	6470-90156-041	78286	TERMINAL BOARD	EA	1
4	56	PAHZZ	5905-00-577-6442	RN8081000F	81349	RESISTOR, FIXED, FILM	EA	2
4	57	XDHZZ		CL21BN700SPES	81349	CAPACITOR, FXD	EA	2
4	58	PAHZZ	5961-00-107-6050	MDA942-3	04713	BRIDGE, RECTIFIER	EA	1
4	59	XDHZZ		MS24693-38	96906	SCREW, MACHINE	EA	3
4	60	PAHZZ	5340-00-684-5984	NAS43DDI-62	80205	SPACER	EA	3
4	61	PAHZZ	5310-00-188-7721	AN960PD6	88044	WASHER, FLAT	EA	7
4	62	PAHZZ	5310-00-807-1465	MS21042-06	96906	NUT, SELF-LOCKING, EX	EA	7
4	63	PAHHZ	5990-00-498-9430	647TO-90159-041	78286	SYNCHRO ASSEMBLY	EA	1
4	64	PAHZZ	5935-00-763-6110	MS3122E20-39S	96906	CONNECTOR, RECEPTACL	EA	1
4	65	PAHZZ	5940-00-433-1021	5120	23466	TERMINAL BOARD	EA	1
4	66	PAHZZ	5935-00-923-3815	MS3122E16-265Z	96906	CONNECTOR, RECEPTACL	EA	1
4	67	PAHZZ	5940-00-451-4962	5116	23466	TERMINAL BOARD	EA	1
4	68	PAHZZ	5305-00-983-6730	MS35206-218	96906	SCREW, MACHINE	EA	50
4	69	PAHZZ	5950-00-805-4019	5-1098	58474	TRANSFORMER, VAR	EA	1
4	70	PAHZZ	5940-00-813-0698	MS25036-LOI1	96906	TERMINAL, LUG	EA	79
4	71	PAHZZ	5940-00-557-1629	MS25036-149	96906	Terminal, LUG	EA	5
4	72	PAOZZ	6240-00-155-7836	MS25237-327	96906	LAMP, INCANDESCENT	EA	3
4	73	PAHZZ	5930000-655-1513	MS35058-21	96906	SWITCH, TOGGLE	EA	3
4	74	PAOZZ	6240-00-892-4420	MS25252NE2D	96906	LAMP, GLOW	EA	3
4	75	PAHZZ	5930-00-655-1582	S35059-23	96906	SWITCH	EA	3
4	76	PAHZZ	5930-00-655-1515	MS35058-23	96906	SWITCH, TOGGLE	EA	9
4	71	PAHZZ	5930-00-952-6163	A3-77T7	81640	SWITCH	EA	1
4	78	PAHZZ	5930-00-615-9376	MS35059-21	96906	SWITCH, TOGGLE	EA	1

SECTION II

TM 11-4920-294-40P-1

(1) ILLUSTRATION		(2)	(3)	(4)	(5)	(6)	(7)	(8)
(a) FIG NO.	(b) ITEM NO.	SMR CODE	NATIONAL STOCK NUMBER	PART NUMBER	FSCM	DESCRIPTION USABLE ON CODE	U/M	QTY INC IN UNIT
4	79	XDHZZ		M39013-1-41	81349	CIRCUIT, BREAKER.....	EA	1
4	80	PAHZZ	5925-00-054-0177	M39019-1-49	81349	CIRCUIT BREAKER.....	EA	1
4	81	PAHZZ	5930-00-615-7880	MS35059-26	96906	SWITCH, TOGGLE.....	EA	1
4	82	PAHHZ	5940-00-466-0216	SS7023-19	78286	TERMINAL BOARD.....	EA	3
4	83	PAHZZ	5905-00-883-9198	RN65DIO01F	81349	RESISTOR, FIXED, FILMUSED ON TBLO2 ONLY	EA	2
4	84	PAHZZ	5905-00-064-0555	RN65D1002F	81349	RESISTOR, FIXED, FILMUSED ON T8102 ONLY	EA	1
4	85	PAHZZ	5905-00-730-0333	RN65D7872F	81349	RESISTOR, FIXED, FILMUSED ON TBI02 ONLY	EA	8
4	86	PAHHZ	5940-00-168-3446	6470-90156-042	78286	TERMINAL BOARD.....	EA	1
4	87	XDHZZ		68GB583-4A552	98927	RELAY.....	EA	1
4	88	XDHZZ	5940-00-718-1721	1724-3	71279	TERMINAL STUD.....	EA	38
4	89	PAHZZ	5305-00-889-2997	MS35206-215	96906	SCREW, MACHINE.....	EA	2
4	90	PAHZZ	5961-00-087-6047	JANIN645	81349	SEMICONDUCTOR DEVIC.....	EA	1
4	91	PAHZZ	5961-00-087-6047	JANIN645	81349	SEMICONDUCTOR DEVIC USED ON T8104 ONLY	EA	2
4	92	PAHZZ	5305-00-984-4980	MS35206-223	96906	SCREW, MACHINE.....	EA	8
14	93	PAHZZ	5905-00-988-2307	RN60DI003F	81349	RESISTOR, FIXED, FILMUSED ON TB101 ONLY*	EA	5
4	94	PAHZZ	5905-00-552-2620	RN75B2001F	81349	RESISTOR, FIXED, FILMUSED ON T8101 ONLY	EA	1
4	95	PAHZZ	5905-00-064-0555	RN65DI00O02F	81349	RESISTOR, FIXED, FILMUSED ON TB107 ONLY	EA	2
4	96	XDHZZ		RN6505002F	81349	RESISTOR, FIXED, FILMUSED ON TB107 ONLY	EA	1
4	97	PAHZZ	5905-00-993-1363	RN6503481F	81349	RESISTOR, FIXED, FILMUSED ON 78107 ONLY	EA	2
4	98	PAHZZ	5905-00-087-6524	R65D02001F	81349	RESISTOR, FIXED, FILMUSED ON T8107 ONLY	EA	2
4	99	PAHZZ	5905-00-811-4B21	RN65D1O0OF	81349	RESISTOR, FIXED, FILMUSED ON TB170 ONLY	EA	1
4	100	PAHZZ	5905-00-079-3194	RN65D2101F	81349	RESISTOR, FIXED, FILMUSED ON TB107 ONLY	EA	1
4	101	PAHZZ	5935-00-578-3489	MS16108-2A	96906	JACK, TIP.....	EA	42
4	102	PAHZZ	5935-00-577-2336	MS16108-3A	96906	JACK, TIP.....	EA	2
					15			



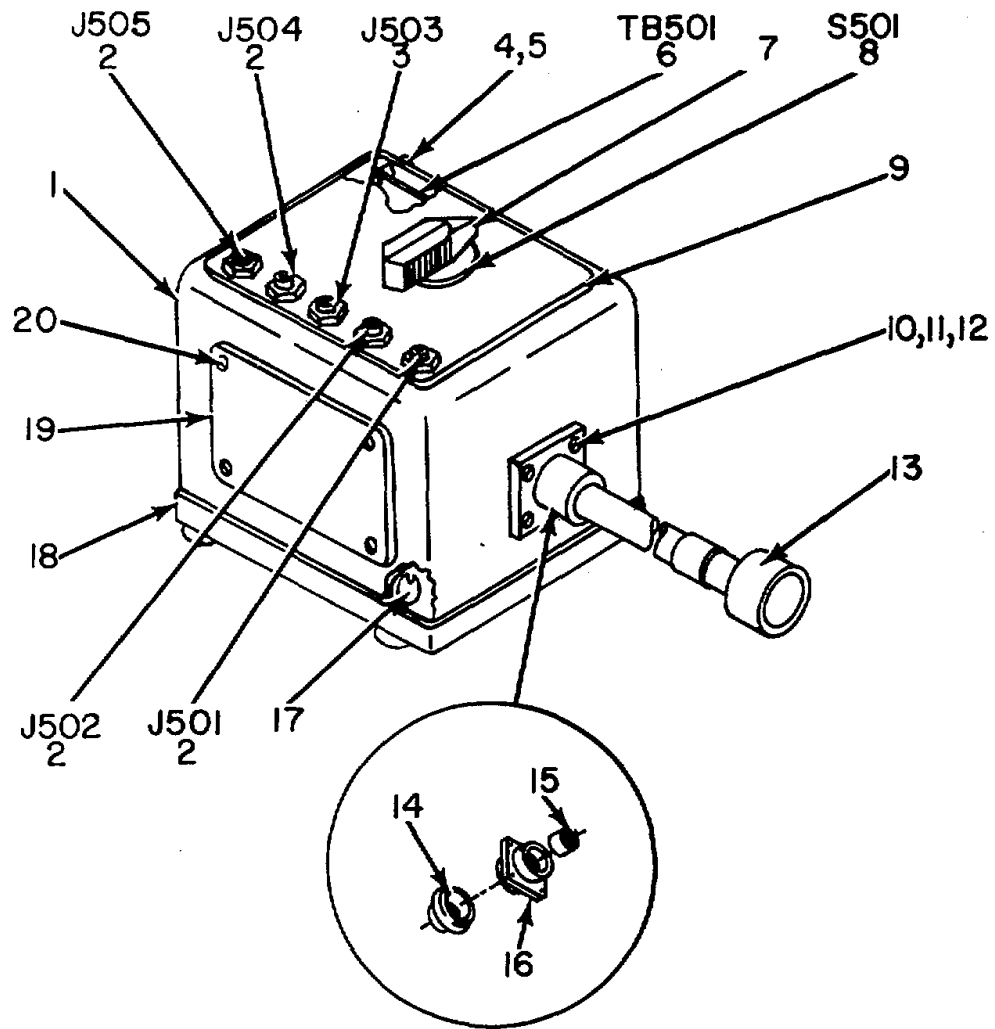
EL6CZ008

Figure 5. Panel, Test Electrical TS-3030/ASM-417, Synchro Assembly.

SECTION II

TM 11-4920-294-40P-1

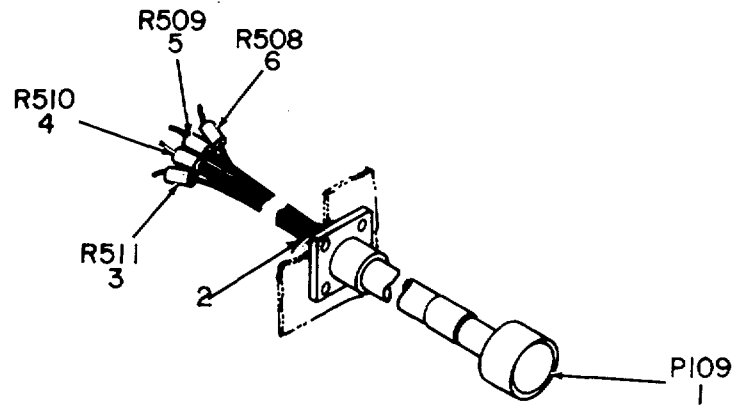
(1) ILLUSTRATION		(2)	(3)	(4)	(5)	(6) DESCRIPTION	(7)	(8)
(a) FIG NO.	(b) ITEM NO.	SMR CODE	NATIONAL STOCK NUMBER	PART NUMBER	FSCM	USABLE ON CODE	U/M	QTY INC IN UNIT
5	1	PAHZZ	5990-00-6884982	RS911-6D	88818	SYNCHRO, TRANSMITTER	EA	1
5	2	PAHZZ	5305-00-889-2997	MS35206-215	96906	SCREW, MACHINE	EA	2
5	3	PAHZZ	5340-00-571-9317	L2-7	00141	CLEAT, MTG	EA	2
5	4	XDHZZ		6470-90159-101	78286	PLATE MOUNTING	EA	1
5	5	PAHZZ	5310-00-187-2408	AN960PD4	88044	WASHER, FLAT	EA	2
5	6	PAHZZ	5310-00-811-6419	NS21042-04	96906	NUTSELF-LOCKING, EX	EA	5
5	7	PAHZZ	6615-00-700-3982	S6190-61072	78286	BUSHING, CONTROL PAN	EA	6
5	8	PAHZZ	5841-00-694-2072	27067	92219	SPEED REDUCER	EA	1
5	9	PAHZZ	5365-00-574-8176	NAS43DDI-28	80205	SPACER, SLEEVE	EA	1
5	10	PAHZZ	5305-00-984-4977	MS35206-220	96906	SCREW, MACHINE	EA	3
					17			



EL6CZ009

Figure 6. Adapter, Test MX-8837/ASM-417

(1) ILLUSTRATION		(2)	(3)	(4)	(5)	(6) DESCRIPTION	(7)	(8)
(a) FIG NO.	(b) ITEM NO.	SMR CODE	NATIONAL STOCK NUMBER	PART NUMBER	FSCM	USABLE ON CODE	U/M	QTY INC IN UNIT
						GROUP 0103 ADAPTER, TEST MX-8837/ASM-417		
6	1	PAHZZ	6615-00-233-9238	6470-90193-10L	78286	COVER SIGNAL ADAPTE	EA	1
6	2	PAHZZ	5935-00-578-3489	MS16108-2A	96906	JACK, TIP	EA	4
6	3	PAHZZ	5935-00-5T7-2336	MSI6108-3A	96906	JACK , TIP	EA	1
6	4	PAHZZ	5305-00-983-6730	MS35206-218	96906	SCREW W, MACHINE	EA	4
6	5	PAHZZ	5365-00-756-0989	NAS43DO-20	80205	SPACER.....	EA	4
6	6	PAHHZ	6615-00-349-9231	6470-90197-04I	78286	CIRCUIT CARD ASSEMB	EA	1
6	7	PAOZZ	5335-00-985-6888	90-8WL2G	94144	KNOB	EA	1
6	8	PAHZZ	5930-00-450-9725	S6170-90143-6	78286	SWITCH, ROTARY	EA	1
6	9	XDHZZ		6470-90194-101	78286	PLATE, INFORMATION	EA	1
6	10	PAHZZ	5305-00-889-2998	MS35206-216	96906	SCREW, MACHINE.....	EA	8
6	11	PAHZZ	5310-00-187-2408	AN960PD04	88044	WASHER, FLAT	EA	16
6	12	PAHZZ	5310-00-811-6419	MS21042-04	96906	NUT, SELL-LOCKING, EX	EA	16
6	13	XDHHH		6470-90195-04I	78386	WIRING ASSEMBLY	EA	1
6	14	PAHZZ	5935-00-259-2019	MS3057-6B	96906	CLAMP, C ABLE, ELECTRI	EA	1
6	15	PAHZZ	5365-00-828-8526	MS3420-6A	96906	BUSHING, RUBBER	EA	1
6	16	PAHZZ	5935-00-079-6718	L0-37093-141	77820	ADAPTER, CABLE CLAMP.....	EA	1
6	17	PAHZZ	5325-00-638-8088	212-12S	71286	RECEPTACLE, TURNLOCK	EA	2
6	18	PAHZZ	6615-00-349-9229	6470-90193-102	78286	BOX.....	EA	1
6	19	PAHZZ	9905-00-136-9055	SS9063-027	78286	NAMEPLATE	EA	1
6	20	PAHZZ	5305-00-889-2997	MS35206-215	96906	SCREW, MACHINE.....	EA	4
					19			



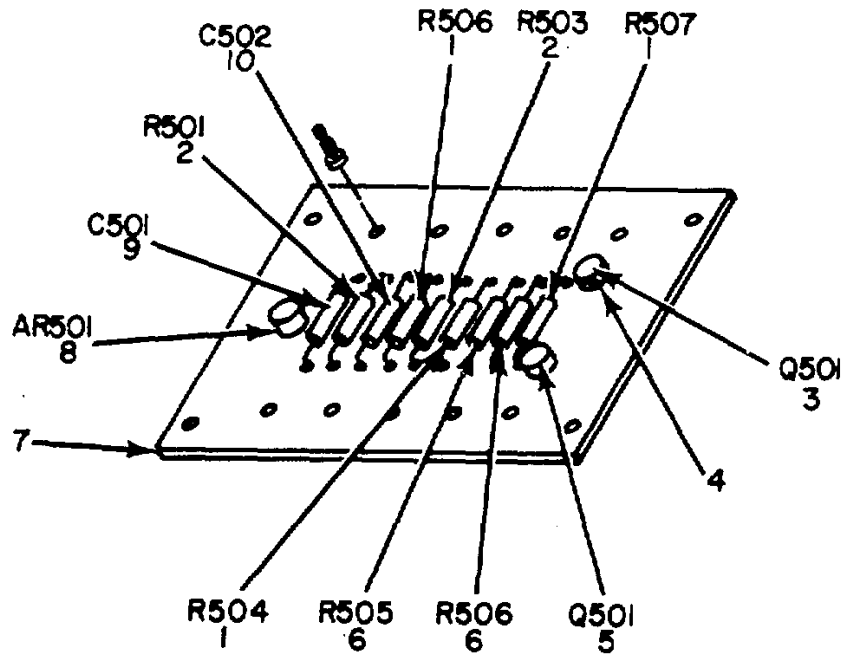
EL6CZ010

Figure 7. Adapter, Test MX-8837/ASM-417, Wiring Assembly.

SECTION II

TM 11-4920-294-40P-1

(1) ILLUSTRATION		(2)	(3)	(4)	(5)	(6)	(7)	(8)
(a) FIG NO.	(b) ITEM NO.	SMR CODE	NATIONAL STOCK NUMBER	PART NUMBER	FSCM	DESCRIPTION USABLE ON CODE	U/M	QTY INC IN UNIT
7	1	XDHZZ		PTO66SEt2-8PKSR	77820	CONNECTOR, PLUG, ELEC	EA	1
7	2	PAHZZ	5940-00-177-7974	MS77070-1	96906	TERMINAL LUG	EA	1
7	3	XDHZZ		RCR20GF565JM	81349	RESISTOR, FXD, CMPSN	EA	1
7	4	XDHZZ		RN60D1154F	81349	RESISTOR, FXD, FILM	EA	1
7	5	XDHZZ		RCR20GF14JM	81349	RESISTOR, FXD, CMPSN.	EA	1
7	6	PAHZZ	5905-00-901-1584	RN60D5492F	81349	RESISTOR, FIXED, FILM	EA	1
					21			



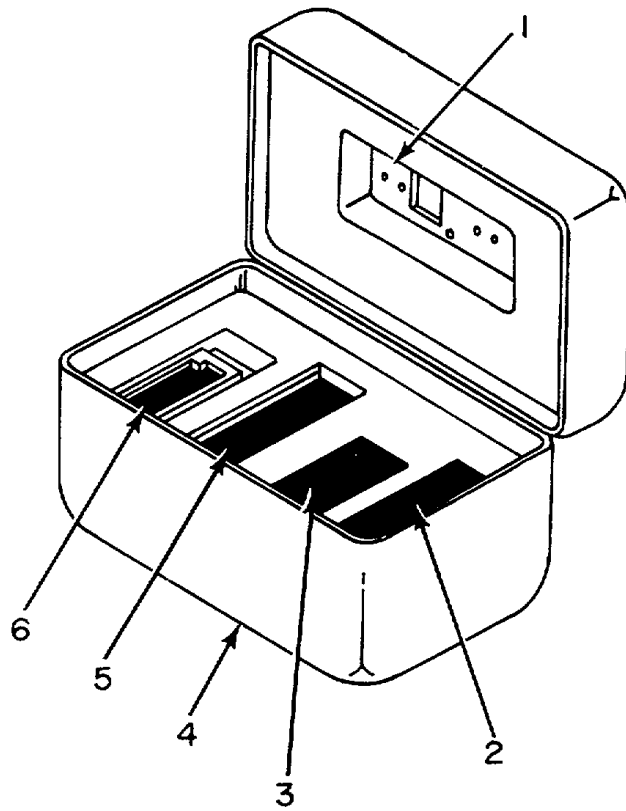
EL6CZ011

Figure 8. Adapter, Test MX-8837/ASM-417, Board Assembly.

SECTION II

TM 11-4920-294-40P-1

(1) ILLUSTRATION		(2)	(3)	(4)	(5)	(6)	(7)	(8)
(a) FIG NO.	(b) ITEM NO.	SMR CODE	NATIONAL STOCK NUMBER	PART NUMBER	FSCM	DESCRIPTION USABLE ON CODE	U/M	QTY INC IN UNIT
8	1	PAHZZ	5905-00-983-6914	RN60DOO12F	81349	RESISTOR, FIXED, FILM	EA	3
8	2	PAHZZ	5905-00-988-2307	RN60DIO03F	81349	RESISTOR, FIXED, FILM.....	EA	2
8	3	PAHZZ	5961-00-107-2739	2N4393	80131	TRANSISTOR	EA	1
8	4	PAHZZ	5999-00-456-4714	10250N	07047	MOUNTING PAD, ELECTR.....	EA	2
8	5	PAHZZ	5961-00-402-9264	JAN2N3331	81349	TRANSISTOR.....	EA	1
8	6	PAHZZ	5905-00-060-2470	RN60D1004F	81349	RESISTOR, FIXED, FILM.....	EA	2
8	7	PAHZZ	6615-00-349-9230	6470-90195-101	78286	PRINTED WIRING BOAR	EA	1
8	8	PAHZZ	5962-00-453-7715	741HM	07263	MICROCIRCUIT, LINEAR	EA	1
8	9	XDHZZ		TS2-010-106-20	17554	CAPACITOR, FXD.....	EA	1
8	10	XDHZZ		EL200ATIO3M	20932	CAPACITOR, FXD.....	EA	1
					23			



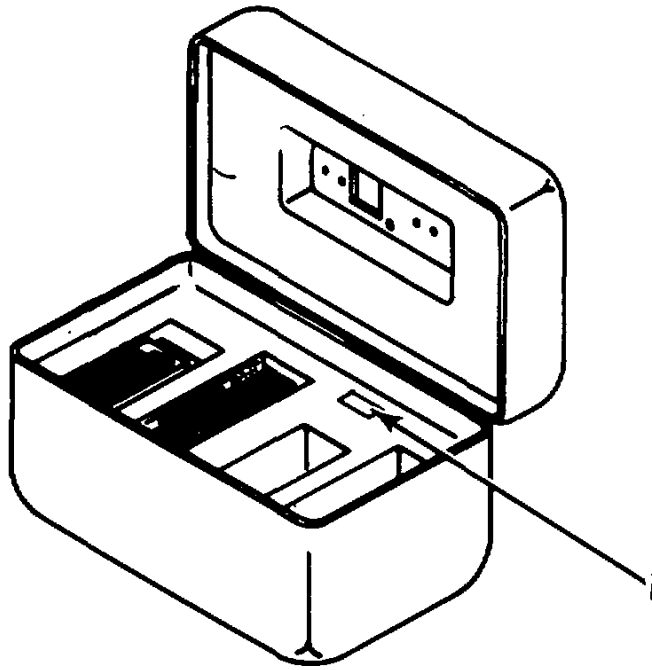
EL6CZO12

Figure 9. Accessory Group, Bench Flight Control Set OQ-94/ASM-417.

SECTION II

TM 11-4920-294-40P-1

(1) ILLUSTRATION		(2)	(3)	(4)	(5)	(6) DESCRIPTION	(7)	(8)
(a) FIG NO.	(b) ITEM NO.	SMR CODE	NATIONAL STOCK NUMBER	PART NUMBER	FSCM	USABLE ON CODE	U/M	QTY INC IN UNIT
						GROUP 02 ACCESSORY GROUP, BENCH FLIGHT CONTROL SET OQ-94/ASM-417		
9	1	XDHZZ		NX-8841/ASM-417	80058	PLATE ASSEMBLY	EA	1
9	2	PAOHH	6625-00-249-4433	MX-8839/AS'-417	80058	ADAPTER, TEST.....	EA	1
9	3	PAOHH	6615-00-249-4448	MX-8840/ASM-417	80058	ADAPTER, TEST	EA	1
9	4	PAOHH	6625-00-409-1001	CY-6962/ASM-417	80058	CASE, TEST SET	EA	1
9	5	PAOHH	6615-00-249-4444	NX-8838/AS4-417	80058	ADAPTER, TEST.....	EA	1
9	6	PAOHH	4920-00-879-6548	MT-3969/ASM-3298	0058	TEST MOUNT, CONT PNL	EA	1
					25			



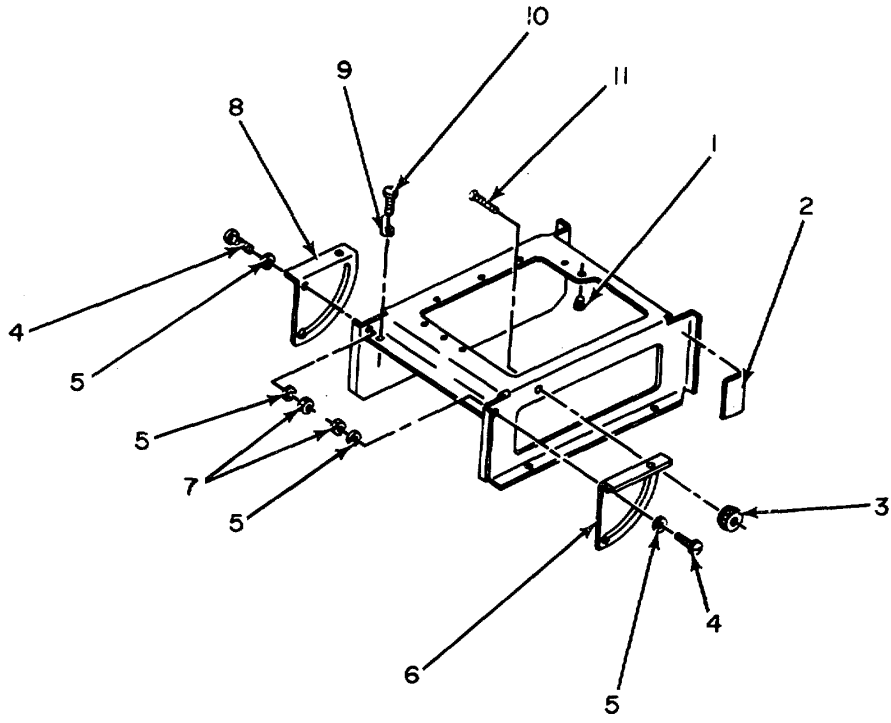
EL6CZ013

Figure 10. Case, Test Set CY-6962/ASM-417.

SECTION II

TM 11-4920-294-40P-1

(1) ILLUSTRATION		(2)	(3)	(4)	(5)	(6)	(7)	(8)
(a) FIG NO.	(b) ITEM NO.	SMR CODE	NATIONAL STOCK NUMBER	PART NUMBER	FSCM	DESCRIPTION USABLE ON CODE	U/M	QTY INC IN UNIT
10	1	XDHZZ		59013-567	78286	GROUP 0201 CASE, TEST SET CY-69621ASM-417 NAMEPLATE	EA	1
					27			



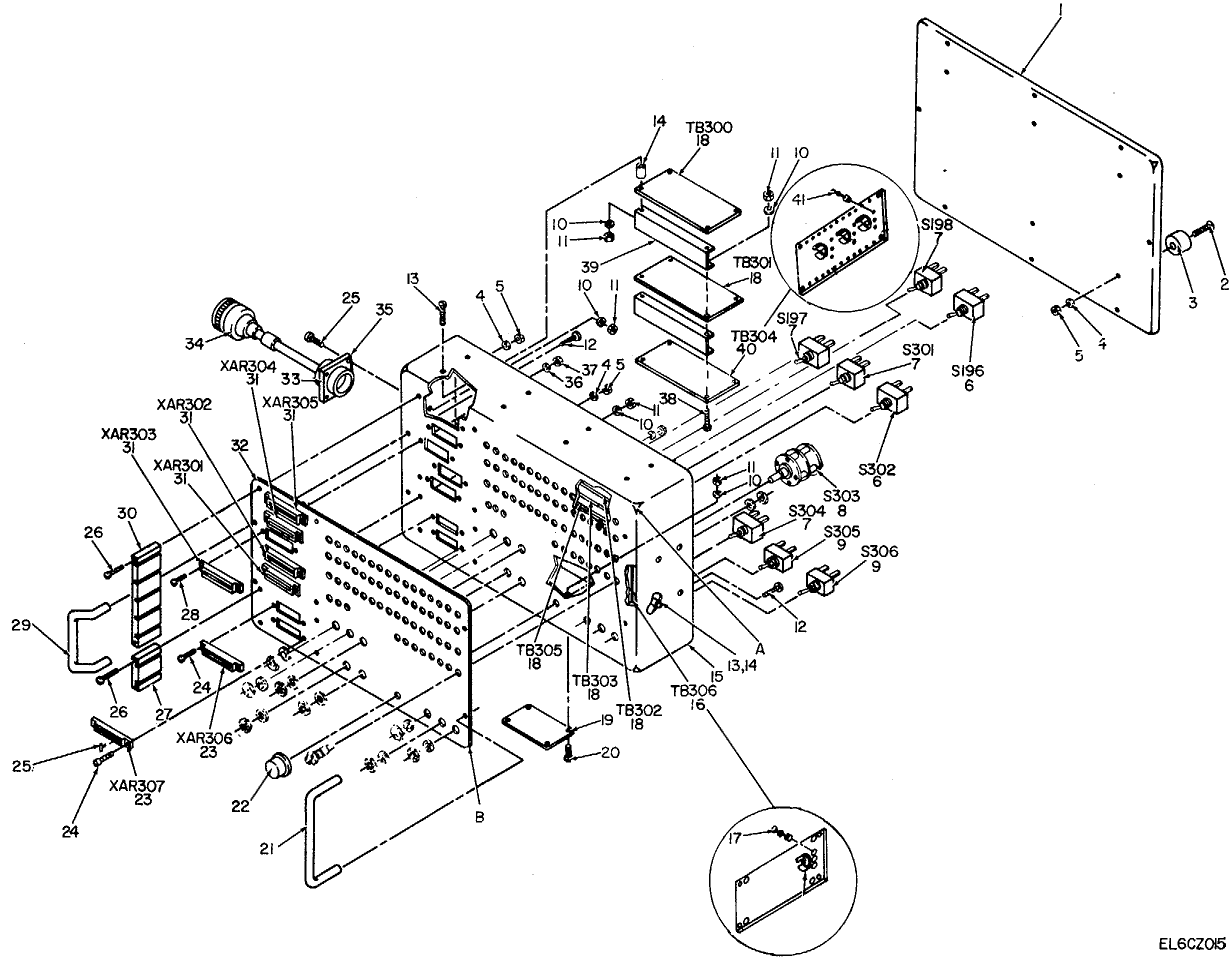
EL6CZ014

Figure 11. Test Mount, Control Panel MT-3969/ASM-329.

SECTION II

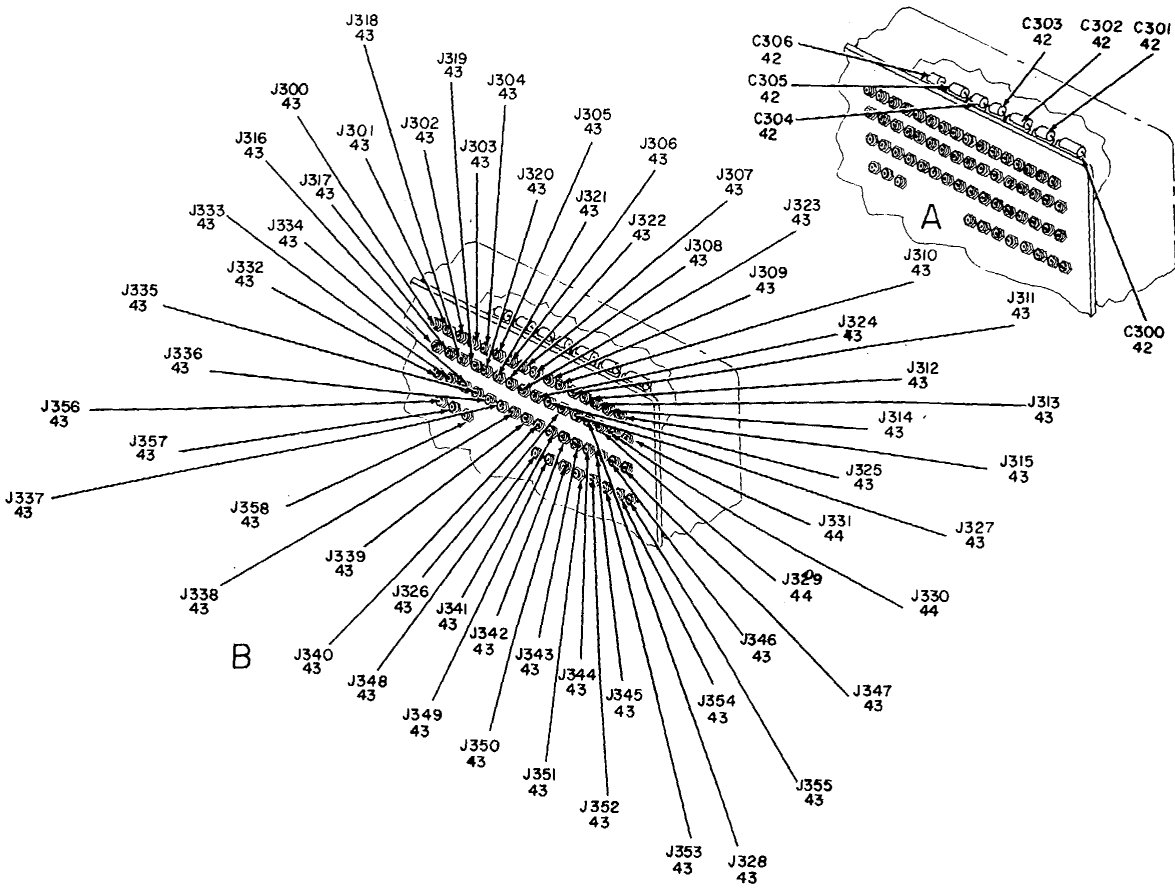
TM 11-4920-294-40P-1

(1) ILLUSTRATION		(2)	(3)	(4)	(5)	(6) DESCRIPTION	(7)	(8)
(a) FIG NO.	(b) ITEM NO.	SMR CODE	NATIONAL STOCK NUMBER	PART NUMBER	FSCM	USABLE ON CODE	U/M	QTY INC IN UNIT
						GROUP 0202 TEST MOUNT, CONTROL PANEL MT-3969/ASM-329		
11	1	PAHZZ	5310-00-725-4715	CLSS032-3	46384	NUT, PLAIN, CLINCH.....	EA	8
11	2	XDHZZ		SS9013-230	78286	NAMEPLATE	EA	1
11	3	XDHZZ		670-9001106	78286	NUT, KNURLED	EA	2
11	4	XDHZZ		1535233-81	96906	SCREW, MACHINE.....	EA	2
11	5	PAHZZ	5310-00-582-5677	MS15795-310	96906	WASHER, FLAT	EA	4
11	6	PAHZZ	6615-00-249-4446	6470-90014-104	78286	LEG, PIVOT, RIGHT HAN	EA	1
11	7	PAHZZ	5310-00-685-2973	79NE040	72962	NUT, SELF-LOCKING, HE, HE	EA	2
11	8	PAHZZ	6615-00-249-4445	6470-90014-105	78286	LEG, PIVOT, LEFT HAND	EA	1
11	9	PAHZZ	5310-00-243-2259	2600S5	71286	WASHER, SPLIT	EA	4
11	10	PAHZZ	5325-00-58-6639	2600-7S	71286	STUD ASSEMBLY, TURNL.....	EA	4
11	11	PAHZZ	5307-00-955-6204	FHS0420-10	46384	STUD.....	EA	2
29/(30 Blank)								



EL6CZ05

Figure 12. Adapter, Test MX-8838/ASM-417 (Sheet 1 of 2).



-EL6CZO16

Figure 12. Adapter, Test MX-8838/ASM-417 (Sheet 2 of 2).

SECTION II

TM 11-4920-294-40P-1

(1) ILLUSTRATION		(2)	(3)	(4)	(5)	(6) DESCRIPTION	(7)	(8)
(a) FIG NO.	(b) ITEM NO.	SMR CODE	NATIONAL STOCK NUMBER	PART NUMBER	FSCM	USABLE ON CODE	U/M	QTY INC IN UNIT
						GROUP 0203 ADAPTER, TEST MX-B838/ASM-417		
12	1	PAHZZ	6625-0[43B-4669	647190164-102	78286	BASE, TEST MODULE.....	EA	1
12	2	PAHZZ	5305-00-889-3001	MS35206-231	96906	SCREW, MACHINE.....	EA	6
12	3	PAHZZ	5340-00-291-3650	18	70485	BUMPER.....	EA	6
12	4	PAHZZ	5310-00-188-7721	AN960P06	88044	WASHER, FLAT.....	EA	14
12	5	PAHZZ	5310-00-B07-1465	MS21042-06	96906	NUT, SELF-LOCKING, EX.....	EA	14
12	6	PAHZZ	5930-00-655-1513	MS35058-21	96906	SWITCH, TOGGLE.....	EA	2
12	7	PAHZZ	5930-00-655-1582	MS35059-23	96906	SWITCH, TOGGLE.....	EA	4
12	8	XDHZZ		S6170-90143-14	78286	SWITCH, ROTARY.....	EA	1
12	9	PAHZZ	5930--00-655-1515	M535058-23	96906	SWITCH, TOGGLE.....	EA	2
12	10	PAHZZ	5310-00-187-2408	AN960PD4	88044	WASHER, FLAT.....	EA	32
12	11	PAHZZ	5310-0D-811-6419	MS21042-04	96906	NUT, SELF-LOCKING, EX.....	EA	32
12	12	PAHZZ	5305-00-944-8271	MS27039-08D6	96906	SCREW, MACHINE.....	EA	4
12	13	PAHZZ	5305-00-984-4977	MS1535206-220	96906	SCREW, MACHINE.....	EA	12
12	14	PAHZZ	5365-00-632-3102	NAS43DDO-16	80205	SPACER, SLEEVE.....	EA	12
12	15	PAHZZ	6625-00-439-4204	6470-90164-101	78286	PANEL.....	EA	1
12	16	PAHHD	6625-00-230-3801	6470-90166-042	78286	COMPONENT BOARD ASSY.....	EA	1
12	17	PAHZZ	5940-00-718-1121	1724-3	71279	TERMINAL, STUD.....	EA	9
12	18	PAHHZ	5940-00-466-0216	SS7023-19	78286	TERMINAL, BOARD.....	EA	5
12	19	PAHZZ	9905-00-136-9054	S559063-024	78286	NAMEPLATE.....	EA	1
12	20	PAHZZ	5305-00-889-2997	MS35206-215	96906	SCREW, MACHINE.....	EA	4
12	21	XDHZZ		1293-1	71279	HANDLE.....	EA	1
12	22	PAOZZ	5355-00-916-4029	65700-90022-041	78286	KNOB.....	EA	1
12	23	PAHZZ	5935-00-902-6853	2VH10-1AB5	05574	CONNECTOR.....	EA	2
12	24	PAHZZ	5305-00-983-6730	MS35206-218	96906	SCREW, MACHINE.....	EA	8
12	25	PAHZZ	5970-00-892-3782	091-0024-000	05574	INSULATOR, PLATE.....	EA	1
12	26	PAHZZ	5305-00-984-6224	MS35206-237	96906	SCREW, MACHINE.....	EA	8
12	27	PAHZZ	6615-00-249-4442	6470-90161-102	78286	GUIDE, MODULE, TEST S.....	EA	2
12	23	PAHZZ	5305-00-954-3938	MS35206-207 -	96906	SCREW, MACHINE.....	EA	10
12	29	PAHZZ	5340-00-934-0534	L255-1-14	17127	HANDLE, BOW.....	EA	1
12	30	PAHZZ	6615-00-249-4443	6470-90161-101	78286	GUIDE, MODULE, TEST S.....	EA	2
12	31	PAHZZ	5935-00-850-5652	DDMF50S	71468	CONNECTOR.....	EA	5
12	32	PAHZZ	9905-00-498-2485	6470-90165-101	78286	PLATE, INSTRUCTION.....	EA	1
12	33	PAHZZ	5935-00-280-1935	MS3057-16B	96906	CLAMP, CABLE, ELECTRI.....	EA	1
12	34	XDHHH		6470-90163-041	78286	WIRING ASSEMBLY.....	EA	1
12	35	PAHZZ	5935-00-513-1775	10-37093-241	77820	SHELL, THRU BULKHEAD.....	EA	1
12	36	PAHZZ	5310-00-183-4404	AN960P02	88044	WASHER, FLAT.....	EA	10
12	37	PAHZZ	5310-00-058-1823	MS21042-02	96906	NUT, SELF-LOCKING, EX.....	EA	10
12	38	PAHZZ	5305-00-984-4979	MS35206-222	96906	SCREW, MACHINE.....	EA	8
12	39	XDHZZ		SS1047-01	78286	BRACKET.....	EA	8
					33			

SECTION II

TM 11-4920-294-40P-1

(1) ILLUSTRATION		(2)	(3)	(4)	(5)	(6)	(7)	(8)
(a) FIG NO.	(b) ITEM NO.	SMR CODE	NATIONAL STOCK NUMBER	PART NUMBER	FSCM	DESCRIPTION USABLE ON CODE	U/M	QTY INC IN UNIT
12	40	PAHHZ	6625-00-563-55	640-90166-041	78286	CIRCUIT CARD ASSEM	EA	1
12	41	XDHZZ	5940-00-718-1721	1724-3	71279	TERMINAL, STUD.....	EA	9
12	42	PAHZZ	5910-00-450-1309	R68J504	96733	CAPACITOR, FIXED, PLA	EA	7
12	43	PAHZZ	5935-00-578-3489	NS16108-2A	96906	JACK, TIP	EA	56
12	44	PAHZZ	5935-00-577-2336	MS16108-3A	96906	JACK, TIP	EA	3
34/(35 Blank)								

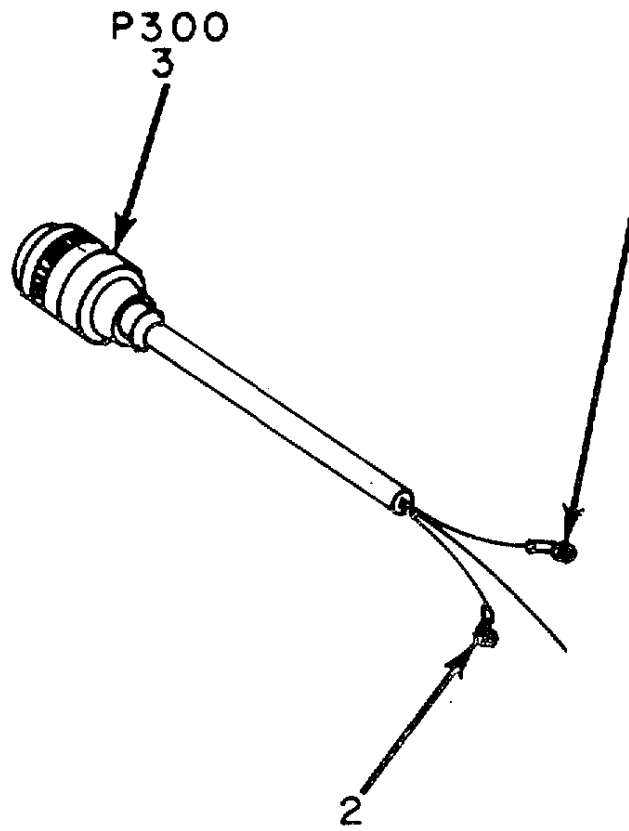
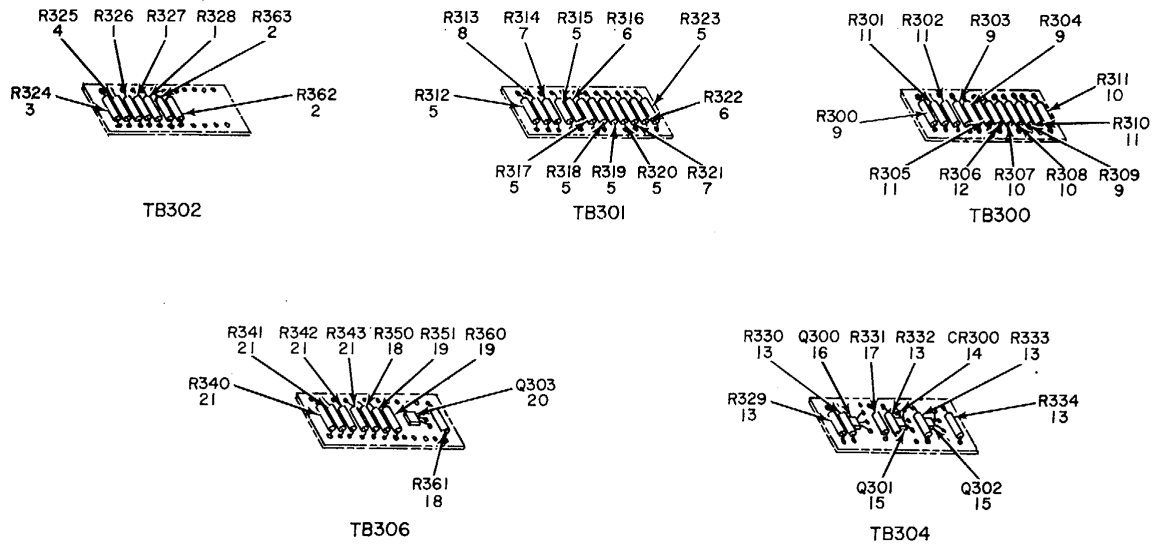


Figure 13. Adapter, Test MX-8838/ASM-417, Wiring Assembly.

SECTION II

TM 11-4920-294-40P-1

(1) ILLUSTRATION		(2)	(3)	(4)	(5)	(6)	(7)	(8)
(a) FIG NO.	(b) ITEM NO.	SMR CODE	NATIONAL STOCK NUMBER	PART NUMBER	FSCM	DESCRIPTION USABLE ON CODE	U/M	QTY INC IN UNIT
13	1	PAHZZ	5940-00-177-7974	M577070-1	96906	TERMINAL, LUG	EA	2
13	2	PAHZZ	5940-00-813-0698	MS25036-10L	96906	TERMINAL, LUG	EA	53
13	3	PAHZZ	5935-00-724-7585	MS3126F24-61P	96906	CONNECTOR, PLUG, ELEC	EA	1
					37			



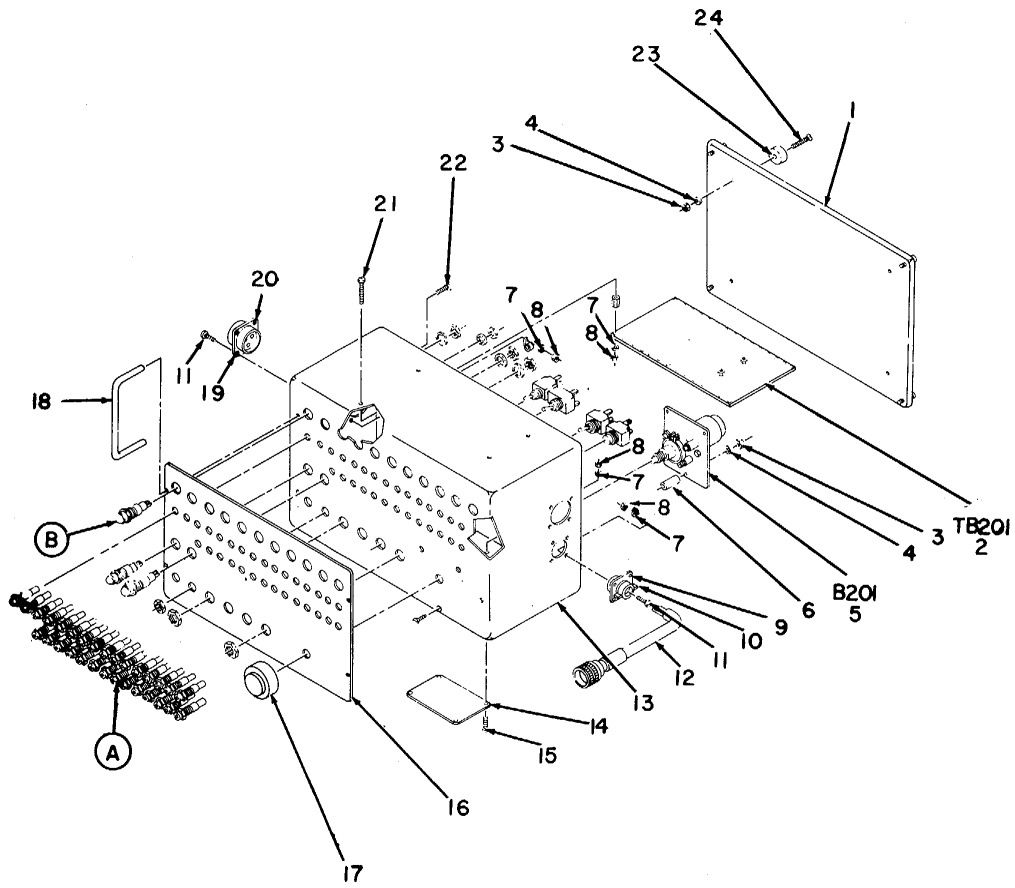
EL6CZ018

Figure 14. Adapter, Test MX-8838/ASM-417, Board Assemblies.

SECTION II

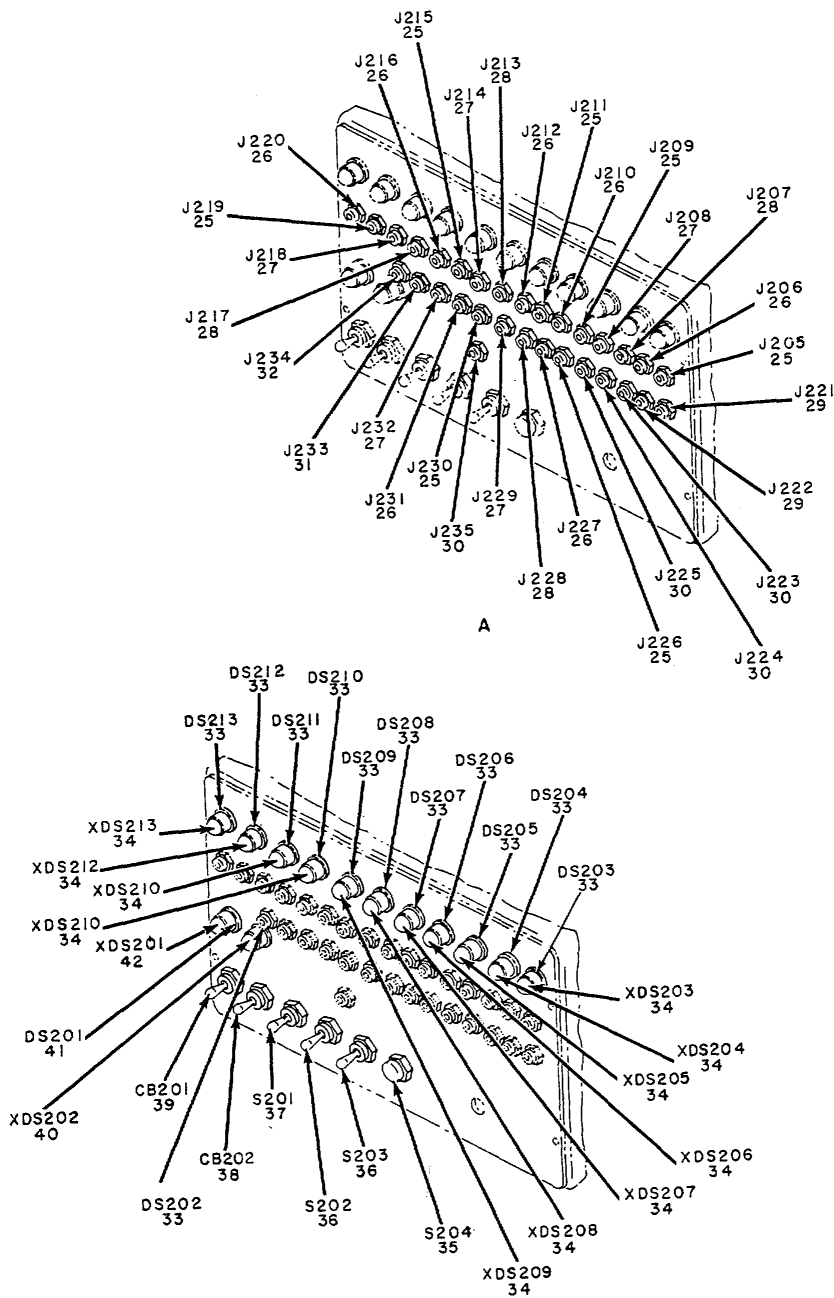
TM 11-4920-294-40P-1

(1) ILLUSTRATION		(2)	(3)	(4)	(5)	(6) DESCRIPTION	(7)	(8)
(a) FIG NO.	(b) ITEM NO.	SMR CODE	NATIONAL STOCK NUMBER	PART NUMBER	FSCM	USABLE ON CODE	U/M	QTY INC IN UNIT
14	1	PAHZZ	5905-00-883-9198	RN65D100IF	81349	RESISTOR, FIXED, FILM USED ON T8302 ...	EA	3
14	2	PAHZZ	5905-00-064-0555	RN65DIO02F	81349	RESISTOR, FIXED, FILM USED ON T8302 ...	EA	2
14	3	PAHZZ	5905-00-811-4821	RN65D1000F	81349	RESISTOR, FIXED, FILM USED ON T8302 ...	EA	1
14	4	PAHZZ	5905-00-087-6524	RN65D2001F	81349	RESISTOR, FIXED, FILM USED ON T8302 ...	EA	1
14	5	PAHZZ	5905-00-883-9198	RN65D1001F	81349	RESISTOR, FIXED, FILM ... USED ON TB301	EA	1
14	6	PAHZZ	5905-00-087-6524	RN60SD001F	81349	RESISTOR, FIXED, FILM USED ON T8301 ...	EA	2
14	7	PAHZZ	5905-00-811-4821	RN65D1000F	81349	RESISTOR, FIXED, FILM USED ON T8301 ...	EA	2
14	8	XDHZZ		RN65DS0100F	81349	RESISTOR, FXD, FILM USED ON TB301	EA	1
14	9	PAHZZ	5905-00-811-4821	RNSD1000F	81349	RESISTOR, FIXED FILM USED ON TB300...	EA	4
14	10	PAHZZ	5905--883-9198	RN6S01001F	81349	RESISTOR, FIXED, FILM USED ON T78300.	EA	3
14	11	PAHZZ	5905-00-087-6524	RN65D2001F	81349	RESISTOR, FIXED, FILM USED ON TB8300	EA	4
14	12	XDHZZ		RN6505000F	81349	RESISTOR, FXD, FILM USED ON T8300.....	EA	1
14	13	PAHZZ	5905-00-06-0555	RN6SD1002F	81349	RESISTOR, FIXED, FILM USED ON T8304 ..	EA	5
14	14	PAHZZ	5961-00-577-6084	1N645	81349	SEMICONDUCTOR DEVIC USED ON TB304	EA	1
14	15	PAHZZ	5961-00-984-3156	2N760A	81349	TRANSISTOR USED ON T8304	EA	2
14	16	XDHZZ		2NZ603A	81349	TRANSISTOR USED ON TB304	EA	1
14	17	XDHZZ		RN65DS002F	81349	RESISTOR, FXD, FILM USED ON TB304	EA	1
14	18	PAHZZ	5905-00-983-6914	RN60D1002F	81349	RESISTOR, FIXED, FILM USED ON TB306...	EA	2
14	19	PAHZZ	5905-00-988-2317	RN6001001F	81349	RESISTOR, FIXED, FILM USED ON TB306...	EA	2
14	20	PAHZZ	5961-00-98-3156	2N760A	81349	TRANSISTOR USED ON TB306.....	EA	1
14	21	PAHZZ	5905-00-050-1128	RN70D2000F	81349	RESISTOR, FIXED, FILM USED ON TB306..	EA	4
39/(40 Blank)								



EL6CZ019

Figure 15. Adapter, Test MX-8840/ASM-417 (Sheet 1 of 2).



EL6CZ020

Figure 15. Adapter, Test MX-8840/ASM-417 (Sheet 2 of 2).

(1) ILLUSTRATION		(2)	(3)	(4)	(5)	(6) DESCRIPTION	(7)	(8)
(a) FIG NO.	(b) ITEM NO.	SMR CODE	NATIONAL STOCK NUMBER	PART NUMBER	FSCM	USABLE ON CODE	U/M	QTY INC IN UNIT
						GROUP 0204 ADAPTER, TEST MX-B840/ASM-417		
15	1	XDHZZ	6625-00-438-4668	64710-90173-102	78286	BASE, TEST UNIT.....	EA	1
15	2	PAHHD	6615-00-240-9554	6470-90175-041	18286	ELECTRONIC COMPONEN.....	EA	1
15	3	PAHZZ	5310-00-807-1465	MS21042-06	96906	NUT, SELF-LOCKING, EX.....	EA	7
15	4	PAHZZ	5310-00-188-7721	AN960PD6	88044	WASHER, FLAT.....	EA	7
15	5	PAHHZ	5990-00-498-9430	6470-90159-041	78286	SYNCHRO ASSEMBLY.....	EA	1
15	6	XDHZZ		NAS43DA1-80	80205	SPACER.....	EA	3
15	7	PAHZZ	5310-00-187-2408	AN960PD4	89804	WASHER, FLAT.....	EA	20
15	8	PAHZZ	5310-00-811-6419	MS21042-04	96906	NUT, SELF-LOCKING, EX.....	EA	20
15	9	PAHZZ	5935-00-079-6718	10-37093-141	77820	ADAPTER, CABLE CLAMP.....	EA	2
15	10	PAHZZ	5935-00-259-2019	MS3057-6B	96906	CLAMP, CABLE, Electro.....	EA	1
15	11	PAHZZ	5305-00-889-2998	MS35206-216	96906	SCREW, MACHINE.....	EA	12
15	12	XDHHH		647090171-041	798286	WIRING ASSEMBLY.....	EA	1
15	13	PAHZD	6625-00-449-7477	6470-90173-101	78286	PANEL, TEST, ELECTRO.....	EA	1
15	14	PAHZZ	9905-00-136-9053	559063-025	78286	PLATE, IDENTIFICATION.....	EA	1
15	15	PAHZZ	5305-00-889-2997	MS35206-215	96906	SCREW, MACHINE.....	EA	4
15	16	PAHZZ	9905-00-239-5984	6470-90174-101	18286	PLATE, INSTRUCTION.....	EA	1
15	17	PAOZZ	5355-00-914029	65700-90022-041	78286	KNOB.....	EA	1
15	18	PAHZZ	5340-00"896-1090	1240-3	71279	HANDLE, BO.	EA	2
15	19	PAHZZ	S935-00-510-1279	10-37093-201	71782	SHELL, ELECTRICAL CO.....	EA	2
15	20	PAHZZ	5935-00-283-3394	N53057-128	96906	ADAPTER, CABLE CLAMP.....	EA	2
15	21	PAHZZ	5309-00-983-6730	M535206-218	96906	SCREW, MACHINE.....	EA	4
15	22	PAHZZ	5305-00-957-7815	MS2469354	96906	SCREW, MACHINE.....	EA	4
15	23	PAHZZ	5340-00-9175-1592	1339	06540	BUMPER, RUBBER.....	EA	4
15	24	PAHZZ	5305-00-889-3000	MS35206-230	96906	SCREW MACHINE.....	EA	4
15	25	PAHZZ	5935-00-681-5690	MS16108-7A	96906	JACK, TIP.....	EA	7
15	26	PAHZZ	5935-00-768-4232	MS16108-SA	96906	JACK, TIP.....	EA	7
15	27	PAHZZ	5935-00-578-3489	MSL6108-2A	96906	JACK, TIP.....	EA	5
15	28	PAHZZ	5935-00-577-2338	MS16108-6A	96906	JACK, TIP.....	EA	4
15	29	PAHZZ	5935-00-9947151	N516108-9A	96906	JACK, TIP.	EA	2
15	30	PAHZZ	5935-00-577-2337	MST6108-SA	96906	JACK, TIP.....	EA	4
15	31	PAHZZ	5935-00-685-9396	S16108-IA	96906	JACK, TIP.....	EA	1
15	32	PAHZZ	5935-00-577-2336	MS16108-3A	96906	JACK, TIP.....	EA	1
15	33	PAOZZ	6240-00-155-7836	MS25237-327	96906	LAMP, INCANDESCENT.....	EA	1
15	34	PAHZZ	6210-00-8069421	MS25256-4	96906	LIGHT, INDICATOR.....	EA	11
15	35	PAHZZ	5930-00-655-1520	MS35058-28	96906	SWITCH, TOGGLE.....	EA	11
15	36	PAHZZ	5930-00-655-1514	MS35058-22	96906	SWITCH, TOGGLE.....	EA	2
15	37	PAHZZ	5930-00-655-1575	MS35059-22	96906	SWITCH, TOGGLE.....	EA	1
15	38	PAHZZ	5925-00-931-5905	390119-41	81349	CIRCUIT BREAKER.....	EA	1
15	39	PAHZZ	5925-00-054-0177	39019-1-49	38349	CIRCUIT BREAKER.....	EA	1

SECTION II

TM 11-4920-294-40P-1

(1) ILLUSTRATION		(2)	(3)	(4)	(5)	(6)	(7)	(8)
(a) FIG NO.	(b) ITEM NO.	SMR CODE	NATIONAL STOCK NUMBER	PART NUMBER	FSCM	DESCRIPTION USABLE ON CODE	U/M	QTY INC IN UNIT
15	40	PAHZZ	6210-00-682-9833	MS25256-6	96906	LIGHT, INDICATOR	EA	1
15	41	PAOZZ	6240-00-892-4420	NS25252NE2D	96906	LAMP, GLOW	EA	1
15	42	PAHZZ	6210-00-808-8604	MS25257-4	96906	LIGHT, INDICATOR	EA	1
4/1(45 Blank)								

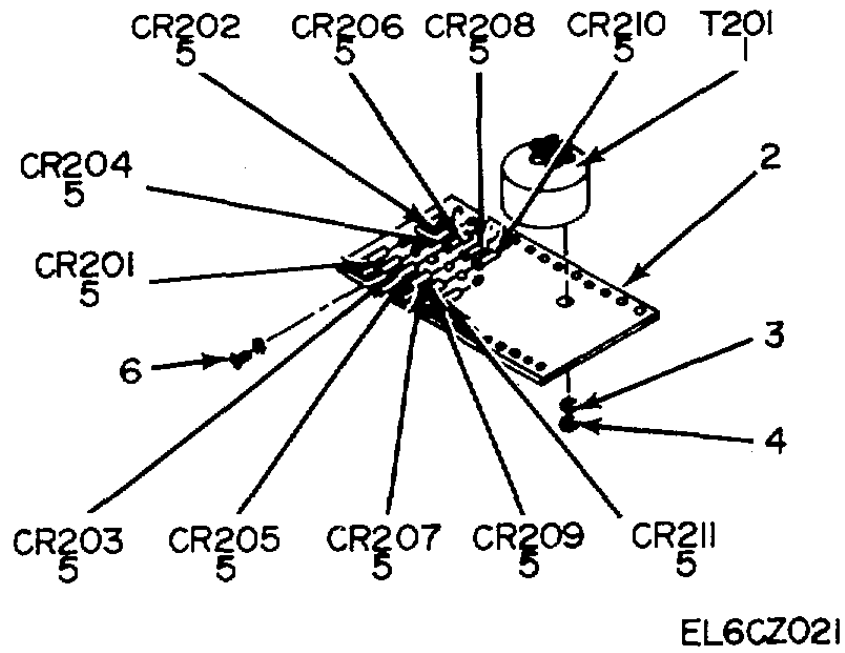
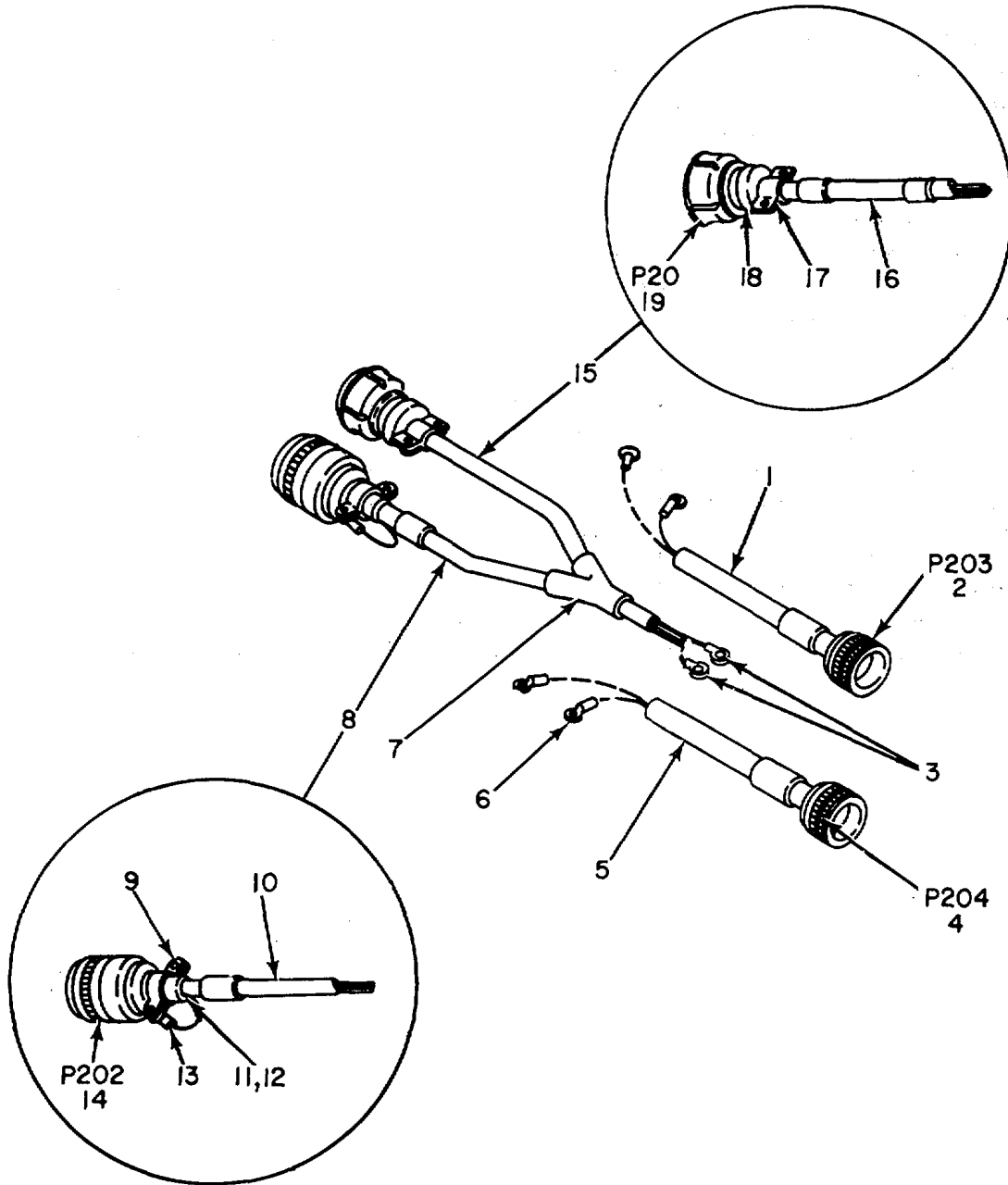


Figure 16. Adapter, Test MX-8840/ASM-417, Board Assembly, TB201.

SECTION II

TM 11-4920-294-40P-1

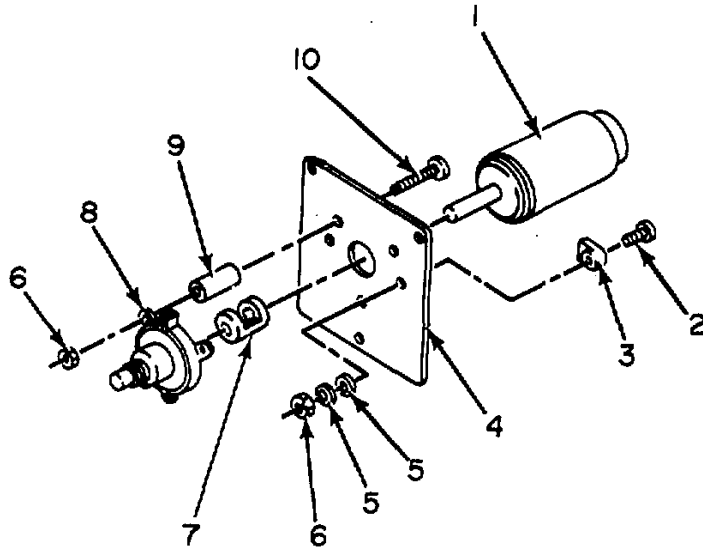
(1) ILLUSTRATION		(2)	(3)	(4)	(5)	(6) DESCRIPTION	(7)	(8)
(a) FIG NO.	(b) ITEM NO.	SMR CODE	NATIONAL STOCK NUMBER	PART NUMBER	FSCM	USABLE ON CODE	U/M	QTY INC IN UNIT
16	1	PAHZZ	5950-00-928-5528	TW61511	02640	TRANSFORMER, POWER	EA	1
16	2	PAHZZ	6625-00-563-5514	6470-90175-042	78286	CIRCUIT CARD ASSEMB.....	EA	1
16	3	PAHZZ	5310-00-184-8966	AN960PD8	88044	WASHER, FLAT	EA	2
16	4	PAHZZ	5310-00-807-1466	MS21042-08	96906	NUT, SELF-LOCKING, EX	EA	2
16	5	PAHZZ	5961-00-577-6084	1N645	81349	SEMICONDUCTOR DEVIC	EA	11
16	6	XDHZZ	5940-00-718-1721	1724-3	71279	TERMINAL, STUD.....	EA	6
					47			



EL6CZ022

Figure 17. Adapter, Test MX-8840/ASM-417, Wiring Assembly.

(1) ILLUSTRATION		(2)	(3)	(4)	(5)	(6) DESCRIPTION	(7)	(8)
(a) FIG NO.	(b) ITEM NO.	SMR CODE	NATIONAL STOCK NUMBER	PART NUMBER	FSCM	USABLE ON CODE	U/M	QTY INC IN UNIT
17	1	XDHZZ		3-4TYPEFFFORMUBLA CK	81349	SLEEVING, INSULATING	FT	V
17	2	PAHZZ	5935-00-724-7580	MS3126F22-55S	96906	CONNECTOR, PLUG, ELEC	EA	1
17	3	PAHZZ	5940-00-177-7974	MS77070-1	96906	TERMINAL, LUG	A	2
17	4	PAHZZ	5935-00-724-7592	MS312FZO-41S	96906	CONNECTOR, PLUG, ELEC	EA	1
17	5	XDHZZ		3-8TYPEFFFORMUBLA CK	81349	SLEEVING, INSULATING	FT	V
17	6	PAHZZ	5940-00-813-0698	MS25036-L01	96906	TERMINAL, LUG	EA	4
17	7	PAHZZ	5970-00-936-8577	81A015-6	06090	TRANSITION	EA	1
17	8	PAHHZ	5995-00-480-522	6500-90570-042	78286	CABLE ASSEMBLY, SPEC	EA	1
17	9	PAHZZ	5935-00-283-3394	MS3057-L28	96906	ADAPTER, CABLE CLAMP	EA	1
17	10	PAHZZ	6145-00-016-8768	CO-03MDF3-18-034 0	81349	CABLE	FT	V
17	11	PAHZZ	5935-00-936-7376	MS3420-10	96906	BUSHING, ELECTRICAL	EA	1
17	12	PAHZZ	5365-00-598-5416	MS3420-12	96906	BUSHING, RUBBER	EA	1
17	13	XDHZZ	5940-00-557-1629	MS25036-49	96906	TERMINAL, LUG	EA	1
17	14	PAHZZ	5935-00-899-6869	MS3107AZO-4P	96906	CONNECTOR, PLUG, ELEC	EA	1
17	15	PAHHZ	6150-00-449-5109	65700-90573-042	78286	CABLE ASSEMBLY, POWE	EA	1
17	16	PAHZZ	6145-00-734-4554	CO-02MGE2-14-040 0	81349	CABLE	FT	V
17	17	PAHZZ	5935-00-688-4026	MS3057-S8A	96916	CLAMP, CABLE, ELECTRI	EA	1
17	18	PAHZZ	5365-00-598-5394	MS3420-BA	96906	BUSHING, RUBBER	EA	1
17	19	PAHZZ	5935-00-060-6320	MS53107A16-11P	96906	CONNECTOR, PLUG, ELEC	EA	1
					49			



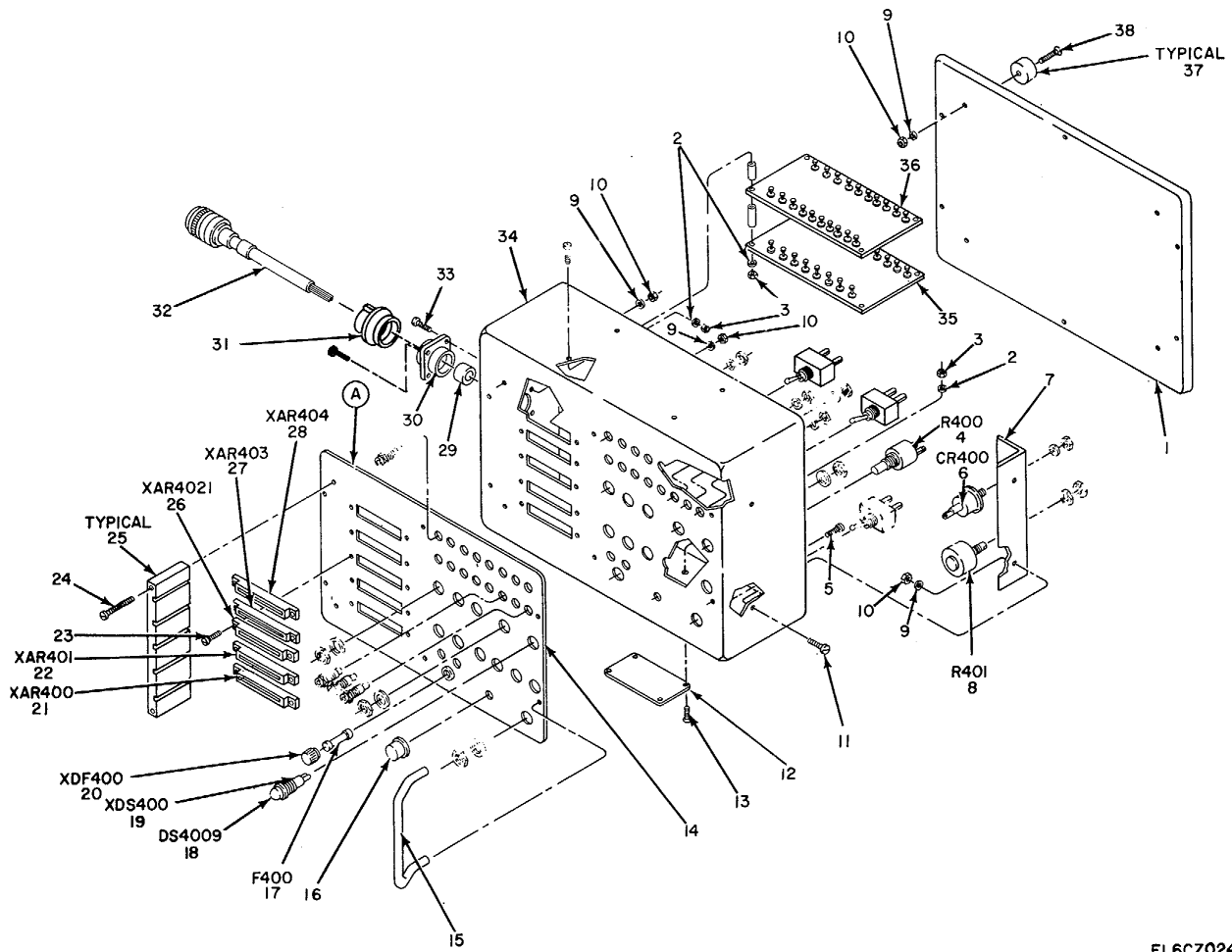
EL6CZ023

Figure 18. Adapter, Test MX-8840/ASM-417, Synchro Assembly.

SECTION II

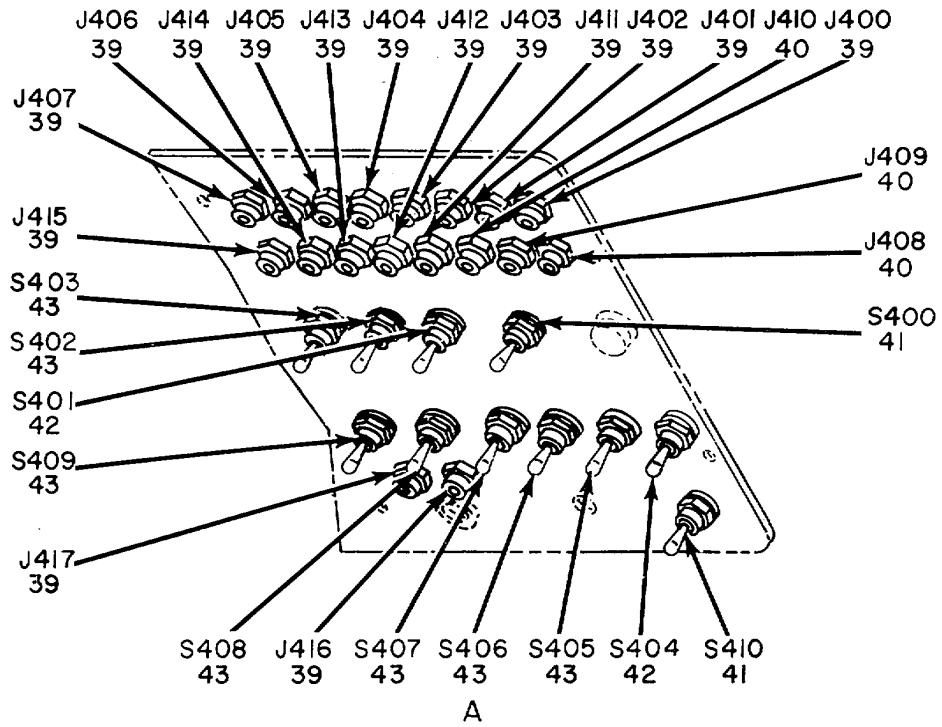
TM 11-4920-294-40P-1

(1) ILLUSTRATION		(2)	(3)	(4)	(5)	(6) DESCRIPTION	(7)	(8)
(a) FIG NO.	(b) ITEM NO.	SMR CODE	NATIONAL STOCK NUMBER	PART NUMBER	FSCM	USABLE ON CODE	U/M	QTY INC IN UNIT
18	1	PAHZZ	5990-00-688-4982	RS91L-60	88818	SYNCHRO, TRANSMITTER	EA	1
18	2	PAHZZ	5305-00-889-2997	MS35206-215	96906	SCREW, MACHINE.....	EA	2
18	3	PAHZZ	5340-00-571-9317	L2-7	00141	CLEAT, MOUNTING.....	EA	2
18	4	XDHZZ		6470-90159-101	78286	PLATE, MOUNTING.....	EA	1
18	5	PAHZZ	5310-00-187-2408	AN960PD4	88044	WASHER, FLAT	EA	4
18	6	PAHZZ	5310-00-811-6419	MS21042-04	96906	NUT, SELF-LOCKING, EX	EA	5
18	7	PAHZZ	6615-00-700-3982	S6190-61072	78286	BUSHING, CONTROL PAN	EA	1
18	8	PAHZZ	5841-00-694-2072	27067	92219	SPEED REDUCER.....	EA	1
18	9	PAHZZ	5365-00-574-8176	NAS43DD1-28	80205	SPACER, SLEEVE.....	EA	3
18	10	PAHZZ	5305-00-984-977	MS35206-220	96906	SCREW, MACHINE.....	EA	3
51/(52 Blank)								



EL6CZ024

Figure 19. Adapter, Test MX-8839/ASM-417 (Sheet 1 of 2).



EL6CZ025

Figure 19. Adapter, Test MX-8839/ASM-417 (Sheet 2 of 2).

(1) ILLUSTRATION		(2)	(3)	(4)	(5)	(6) DESCRIPTION	(7)	(8)
(a) FIG NO.	(b) ITEM NO.	SMR CODE	NATIONAL STOCK NUMBER	PART NUMBER	FSCM	USABLE ON CODE	U/M	QTY INC IN UNIT
						GROUP 0205 ADAPTER, TEST MX-8839/AS'-417		
19	1	PAHZZ	6625-00-439-6150	6470-90182-102	78286	BASE, TEST ADAPTER	EA	1
19	2	PAHZZ	5310-00-187-2408	AN960P04	88044	WASHER, FLAT	EA	12
19	3	PAHZZ	5310-00-811-6419	MS21042-04	96906	NUT, SELF-LOCKING, EX	EA	12
19	4	PAHZZ	5905-00-893-9499	RV4NAYSD504A	81349	RESISTOR, VARIABLE, N	EA	1
19	5	PAHZZ	5305-00-944-8271	H27039-0806	96906	SCREW, MACHINE	EA	4
19	6	PAHZZ	5961-00-950-6588	IN3996	24444	DIODE ZENER	EA	1
19	7	XDHZZ		6470-90179-101	78286	BRACKET	EA	1
19	8	PAHZZ	5905-00-417-7242	RYVTAYSAS00A	81349	RESISTOR.VARIABLE, N	EA	1
19	9	PAHZZ	5310-00-188-7t21	AN960PD6	88044	WASHER, FLAT	EA	20
19	10	PAHZZ	5310-00-807-1465	MS21042-06	96906	NUT, SELF-LOCKING, EX	EA	20
19	11	PAHZZ	5305-00-98s4989	MS35206-229	96906	SCREEN, MACHINE	EA	2
19	12	PAHZZ	9905-0d-138-5611	SS9063-026	78286	NAMEPLATE	EA	1
19	13	PAHZZ	5305-00-889-2997	MS35206-215	96906	SCREW, MACHINE	EA	4
19	14	XDHZZ		6470-90159-101	18286	PLATE, MOUNTING	EA	1
19	15	PAHZZ	534-00-9340534	1255-1-14	71279	HANDLE, BO	EA	2
19	16	PAOZZ	5355-00-918-4029	65700-00-0022-041	78286	KNOB	EA	1
19	17	XDHZZ		FNMO-1-4A	81349	FUSE	EA	1
19	18	PAOZZ	6240-00-157836	MS25237-327	96906	LAMP, INCANDESCENT	EA	1
19	19	PAHZZ	6210-00-682-9833	NS252566	96906	LIGHT, INDICATO	EA	1
19	20	XDHZZ		M19207-29-001	81349	FUSEHOLDER	EA	1
19	21	PAHZZ	5935-00-450-8624	NWITSA9AB	81312	CONNECTOR	EA	1
19	22	PAHZZ	5935-00-232-2629	MIINSA9COEFHJLN	81312	CONNECTOR	EA	1
19	23	PAHZZ	5305-00-889-3000	MS35206-230	96906	SCREW, MACHINE	EA	10
19	24	PAHZZ	5305-00-984-6224	S35206-237	96906	SCREW, MACHINE	EA	4
19	25	PAHZZ	6615-00-249-4443	6470-90161-101	78286	GUIDE, NODULE, TEST S	EA	2
19	26	PAHZZ	5935-00-450-8629	WMITSA9NP	81312	CONNECTOR	EA	1
19	2	PAHZZ	5935-00-450-8625	WI7SA9AC	81312	CONNECTOR	EA	1
19	28	PAHZZ	5935-00-415-0981	WNLTSA9ADE	81312	CONNECTOR	EA	1
19	29	PAHZZ	5365-00-28-8526	MS3420-6A	96906	BUSHING, RUBBER	EA	1
19	30	PAHZZ	5935-00-917-7163	10-37093-141	77820	ADAPTER, CABLE CLAMP	EA	1
19	31	PAHZZ	5935-00-259-2019	153057-65	96906	CLAMP, CABLE, ELECTRI	EA	1
19	32	XDHHH		6470-90181-041	18286	WIRING ASSEMBLY	EA	1
19	33	PAHZZ	5305-00-983-6730	N535206-218	96906	SCREW, MACHINE	EA	2
19	34	PAHZD	6625-00-439-6151	64170-90182-101	78286	PANEL, TEST ADAPTER	EA	1
19	35	PAHHD	6615-00-240-9555	640-9018-041	78286	ELECTRONIC COMPONEN	EA	1
19	36	PAHHD	6615-00-240-9556	6470-90184-042	78286	ELECTRONIC COMPONEN	EA	1
19	37	PAHZZ	530-00-291-3650		70485	BUMPER	EA	4
19	38	PAHZZ	5305-00-889-3001	NS535206231	96906	SCREW, MACHINE	EA	4
19	39	PAHZZ	5935-00-578-3489	MS16108-2A-2A	96906	JACK, TIP	EA	15

SECTION II

TM 11-4920-294-40P-1

(1) ILLUSTRATION		(2)	(3)	(4)	(5)	(6)	(7)	(8)
(a) FIG NO.	(b) ITEM NO.	SMR CODE	NATIONAL STOCK NUMBER	PART NUMBER	FSCM	DESCRIPTION USABLE ON CODE	U/M	QTY INC IN UNIT
19	40	PAHZZ	5935-00-577-2336	MSL6108-3A	96906	JACK, TIP	EA	3
19	41	PAHZZ	5930-00-655-1575	MS35059-22	96906	SWITCH, TOGGLE	EA	2
19	42	PAHZZ	5930-00-655-1517	MS35058-26	96906	SWITCH, TOGGLE	EA	2
19	43	PAHZZ	5930-00-655-1515	MS35058-23	96906	SWITCH, TOGGLE	EA	7
56/(57 Blank)								

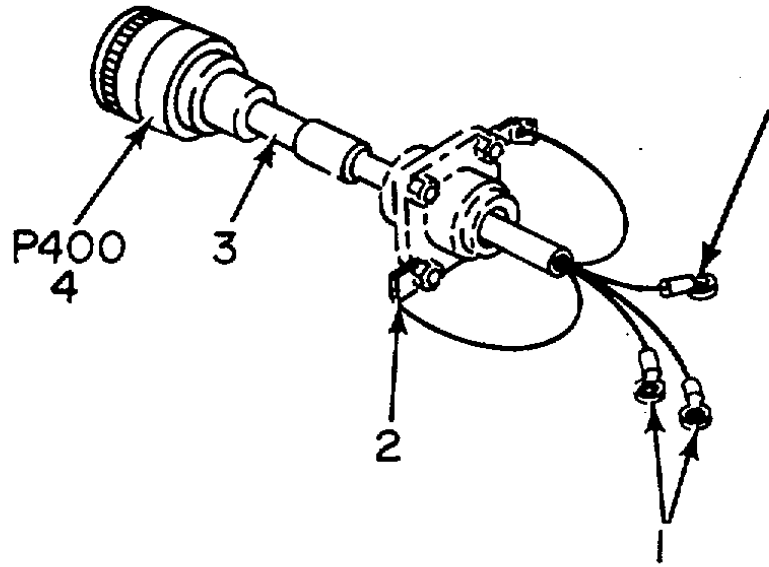


Figure 20. Adapter, Test MX-8839/ASM-417, Wiring Assembly.

SECTION II

TM 11-4920-294-40P-1

(1) ILLUSTRATION		(2)	(3)	(4)	(5)	(6)	(7)	(8)
(a) FIG NO.	(b) ITEM NO.	SMR CODE	NATIONAL STOCK NUMBER	PART NUMBER	FSCM	DESCRIPTION USABLE ON CODE	U/M	QTY INC IN UNIT
20	1	PAHZZ	5940-00-813-0698	MS25036-10	96906	TERMINAL, LUG	EA	3
20	2	PAHZZ	5940-00-177-7974	MS77070-1	96906	TERMINAL, LUG	EA	2
20	3	XDHZZ		1-4RNF100BLACK	81349	SLEEVING, INSULATING	FT	V
20	4	XDHZZ		#S3126F12-SPX	96906	CONNECTOR, PLUG, ELEC	EA	1
					59			

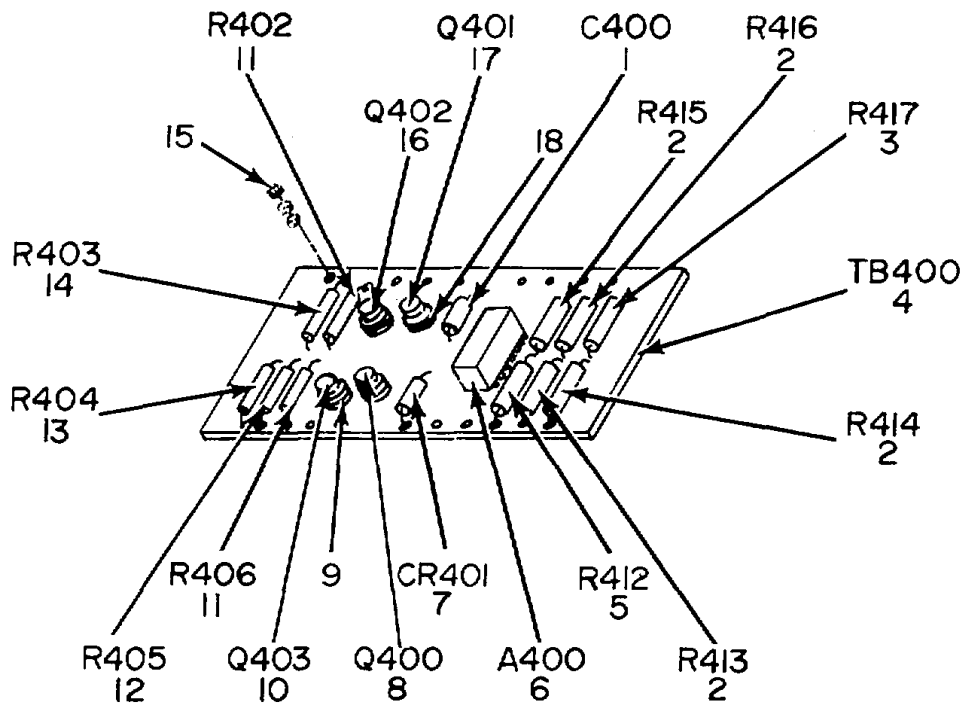


Figure 21. Adapter, Test MX-8839/ASM-417, Board Assembly, 6470-90184-041.

SECTION II

TM 11-4920-294-40P-1

(1) ILLUSTRATION		(2)	(3)	(4)	(5)	(6) DESCRIPTION	(7)	(8)
(a) FIG NO.	(b) ITEM NO.	SMR CODE	NATIONAL STOCK NUMBER	PART NUMBER	FSCM	USABLE ON CODE	U/M	QTY INC IN UNIT
21	1	PAHZZ	5910-00-450-8613	K01SK10SK	05397	CAPACITOR, FIXED, CER.....	EA	1
21	2	PAHZZ	5905-00-059-7486	RN6504990F	81349	RESISTOR FIXED, FILM	EA	4
21	3	PAHZZ	5905-00-064-0555	RN65D1002F	81349	RESISTOR, FIXED, FILM.....	EA	1
21	4	PAHZZ	6615-00-617-9006	6470-90185-101	78286	PRINTED CIRCUIT BOA	EA	1
21	5	PAHZZ	5905-00-814-3815	RN6501003F	81349	RESISTOR, FIXED, FILM.....	EA	1
21	6	PAHZZ	5962-00-455-0883	US5473A	56289	CIRCUIT INTEGRATED	EA	1
21	7	PAHZZ	5961-00-087-6047	JAN1N645	81349	SEMICONDUCTOR DEVIC.....	EA	1
21	8	PAHZZ	5961-00-226-8579	JAN2N930	81349	TRANSISTOR.....	EA	1
21	9	PAHZZ	5999-00-050-1197	10124DAP	07047	MOUNTING PAD ELECTRO.....	EA	3
21	10	PAHZZ	5961-00-984-3156	JAN2N760A	81349	TRANSISITOR.....	EA	1
21	11	PAHZZ	5905-00-913-3073	M22684-01-0112	81349	RESISTOR, FIXED, FILM.....	EA	2
21	12	PAHZZ	5905-00-730-1490	M22684-01-0098	81349	RESISTOR, FIXED, FILM	EA	1
21	13	PAHZZ	5905-00-727-5314	M2268-01-0002	81349	RESISTOR, FIXED, FILM.....	EA	1
21	14	PAHZZ	5905-00-727-5324	M22684-01-0048	81349	RESISTOR, FIXED, FILM.....	EA	1
21	15	PAHZZ	5940-00-115-0765	2004-2	71279	TERMINAL	EA	26
21	16	PAHZZ	5961-00-764-3167	2N264T	80131	TRANSISTOR	EA	1
21	17	PAHZZ	5961-00-068-1985	2N4036	80131	TRANSISTOR	EA	1
21	18	PAHZZ	5999-00-916-6189	10135DAP	07047	MOUNTING PAD, ELECTR.....	EA	1
					61			

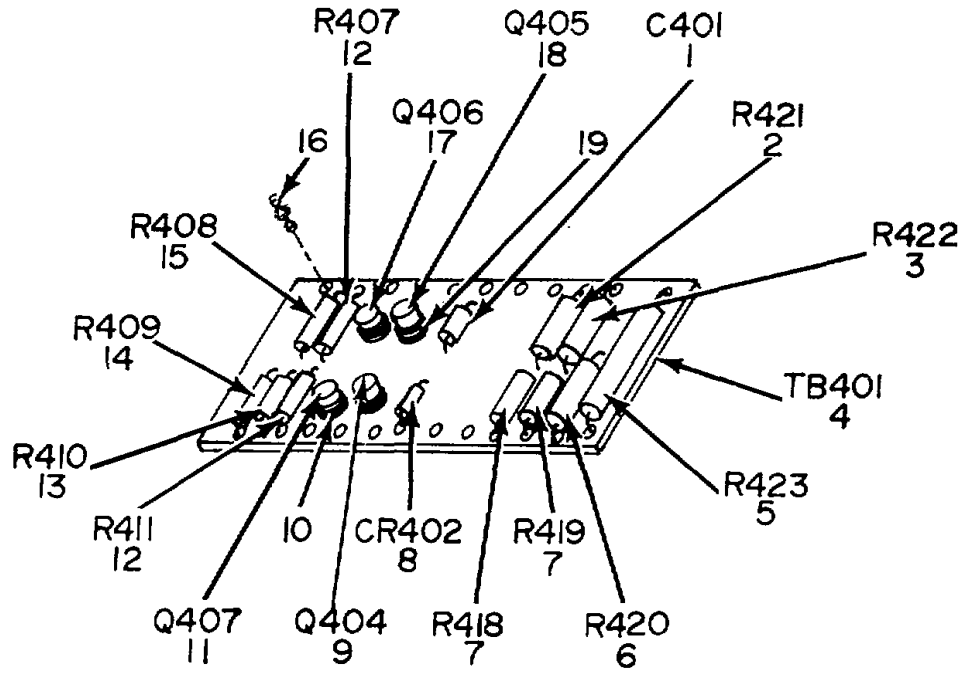
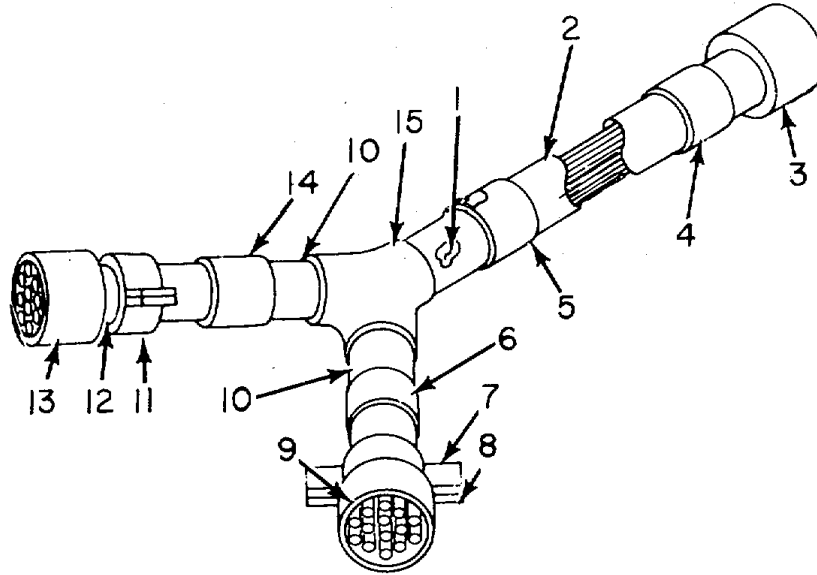


Figure 22. Adapter, Test MX-8839/ASM-417, Board Assembly, 6470-90184-042.

SECTION II

TM 11-4920-294-40P-1

(1) ILLUSTRATION		(2)	(3)	(4)	(5)	(6) DESCRIPTION	(7)	(8)
(a) FIG NO.	(b) ITEM NO.	SMR CODE	NATIONAL STOCK NUMBER	PART NUMBER	FSCM	USABLE ON CODE	U/M	QTY INC IN UNIT
22	1	PAHZZ	5910-00-450-8613	K01SK105K	05397	CAPACITOR, FIXED, CER	EA	1
22	2	XDHZZ		RD65P24R9G	81349	RESISTOR, FXD	EA	1
22	3	PAHZZ	5905-00-954-8708	RD65PIOROG	81349	RESISTOR, FIXED, FILM	EA	1
22	4	PAHZZ	6615-00-617-9006	6470-90185-101	78286	PRINTED CIRCUIT BOA	EA	1
22	5	PAHZZ	5905-00-988-1923	R67TV910	81349	RESISTOR, FIXED, WIRE	EA	1
22	6	PAHZZ	5905-00-995-4779	MNRN65D1104F	81349	RESISTOR, FIXED, FILM	EA	1
22	7	PAHZZ	5905-00-990-2832	RL16502002F	81349	RESISTOR, FIXED, FILM	EA	2
22	8	PAHZZ	5961-00-087-6047	JAN1N645	81349	SEMICONDUCTOR DEVIC	EA	1
22	9	PAHZZ	5961-00-226-8579	JAN2N930	81349	TRANSISTOR.....	EA	1
22	10	PAHZZ	5999-00-050-1197	101240AP	07047	MOUNTING PAD, ELECTR	EA	3
22	11	PAHZZ	5961-00-984-3156	JAN2N760A	81349	TRANSISTOR	EA	1
22	12	PAHZZ	5905-00-913-3073	M22684-01-0112	81349	RESISTOR, FIXED, FILM	EA	2
22	13	PAHZZ	5905-00-730-1490	M22684-01-0098	81349	RESISTOR, FIXE D, FILM	EA	1
22	14	PAHZZ	5905-00-727-5314	M22684-01-0002	81349	RESISTOR, FIXED, FILM.....	EA	1
22	15	PAHZZ	5905-00-727-5324	M22684-01-0048	81349	RESISTOR, FIXED, FILM	EA	1
22	16	PAHZZ	5940-00-115-0765	2004-2	71279	TERMINAL	EA	26
22	17	PAHZZ	5961-00-764-3167	2N2647	80131	TRANSISTOR	EA	1
22	18	PAHZZ	5961-00-068-1985	2N4036	80131	TRANSISTOR.....	EA	1
22	19	PAHZZ	5999-00-916-6189	101350AP	07047	MOUNTING PAD, ELECTR	EA	1
					63			



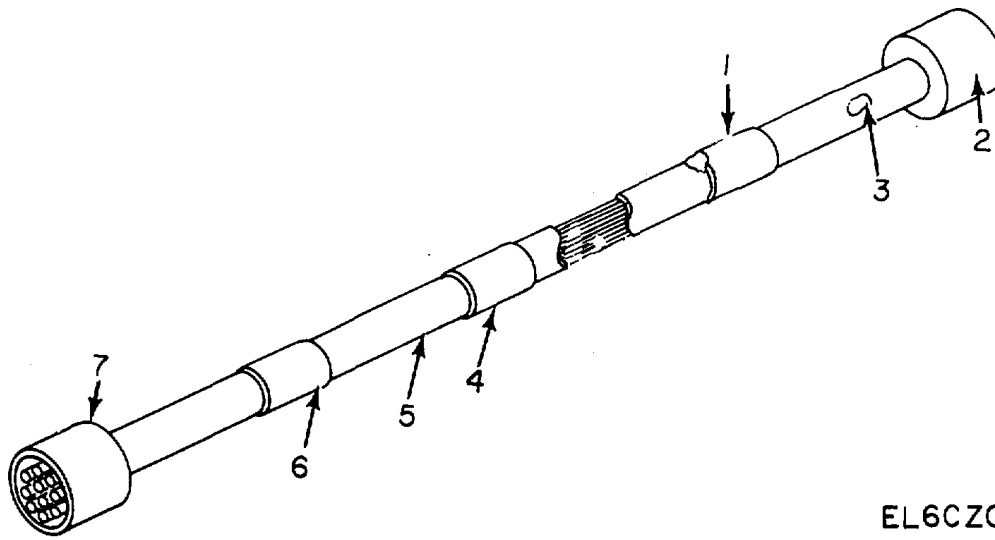
EL6CZ029

Figure 23. Cable Assembly, Special Purpose, Electrical Branched
CX-12495/ASM-417 (W-1).

SECTION II

TM 11-4920-294-40P-1

(1) ILLUSTRATION		(2) NATIONAL SMR CODE	(3) STOCK NUMBER	(4) DESCRIPTION PART NUMBER	(5) FSCM	(6) QTY USABLE ON CODE	(7) U/M	(8) INC IN UNIT
(a) FIG NO.	(b) ITEM NO.							
						GROUP 03 CABLE ASSEMBLY, SPECIAL PURPOSE ELECTRICAL BRANCHED CX-12495/ASM-417 (W-L)		
23	1	PAHZZ	5940-00-232-5209	32055900779		SPLICE, CONDUCTOR	EA	1
23	2	XDHZZ		1-4TYPEFFORM UBLA CK	81349	SLEEVING, INSULATING	FT	V
23	3	PAHZZ	5935-00-578-3200	MS3106E18-20S	96906	CONNECTOR, PLUG, ELEC	EA	1
23	4	XDHZZ		SS7026-1374	78286	SLEEVE, MARKER	EA	1
23	5	XDHZZ		557026-1375	78286	SLEEVE, MARKER	EA	1
23	6	XDHZZ		SS7026-717L	78286	SLEEVE, MARKER	EA	1
23	7	PAHZZ	5365-00-598-5394	MS3420-8A	96906	BUSHING, CABLE	EA	1
23	8	PAHZZ	5935-00-688-4026	MS53057-BA	96906	CLAMP, CABLE, ELECT RI	EA	1
23	9	PAHZZ	5935-00-060-6320	MS3107A16-11P	96906	CONNECTOR, PLUG, E LEC	EA	1
23	10	XDHZZ		1-8TYPEFFORM UBLA CK	81349	SLEEVING, INSULATING	FT	Y
23	11	PAHZZ	5935-00-223-0572	MS3057-12A	96906	ADAPTER, CABLE CLAMP.....	EA	1
23	12	PAHZZ	5365-00-598-5287	MS3420-12A	96906	BUSHING, CABLE	EA	1
23	13	PAHZZ	5935-00-899-6869	MS3107A20-4P	96906	CONNECTOR, PLUG, ELEC	EA	1
23	14	XDHZZ		SS7026-1718	78286	SLEEVE, MARKER	EA	1
23	15	PAHZZ	5970-00-431-6736	557073-1800	78286	BOOT	EA	1
					65			



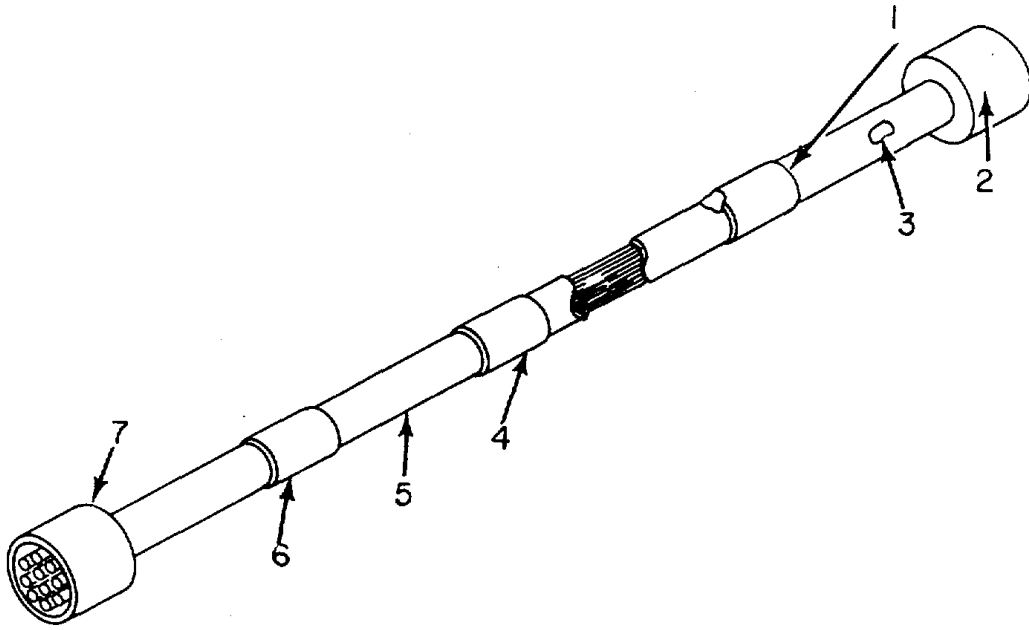
EL6CZ030

Figure 24. Cable Assembly, Special Purpose, Electrical CX-12496/U (W-2).

SECTION II

TM 11-4920-294-40P-1

(1) ILLUSTRATION		(2)	(3)	(4)	(5)	(6) DESCRIPTION	(7)	(8)
(a) FIG NO.	(b) ITEM NO.	SMR CODE	NATIONAL STOCK NUMBER	PART NUMBER	FSCM	USABLE ON CODE	U/M	QTY INC IN UNIT
						GROUP 04 CABLE ASSEMBLY, SPECIAL PURPOSE, ELECTRICAL CX-12496/U (W-2)		
24	1	XDHZZ		557026-1376	78286	SLEEVE, MARKER	EA	1
24	2	PAHZZ	5935-00-7266504	MS312F518-32P	96906	CONNECTOR, PLUG, ELEC	EA	1
24	3	PAHZZ	5940-00-232-5209	320559	00779	SPLICE, CONDUCTOR	EA	1
24	4	XDHZZ		SS7026-1377	78286	SLEEVE, MARKER	EA	1
24	5	XDHZZ		1-2TYPEFFORMBLA CK	81349	SLEEVING, INSULATING	FT	V
24	6	XDHZZ		SS7026-1719	78286	SLEEVE, MARKER	EA	1
24	7	PAHZZ	5935-00-780-5761	MS3126F18-32S	96906	CONNECTOR, PLUG, ELEC	EA	1
					67			



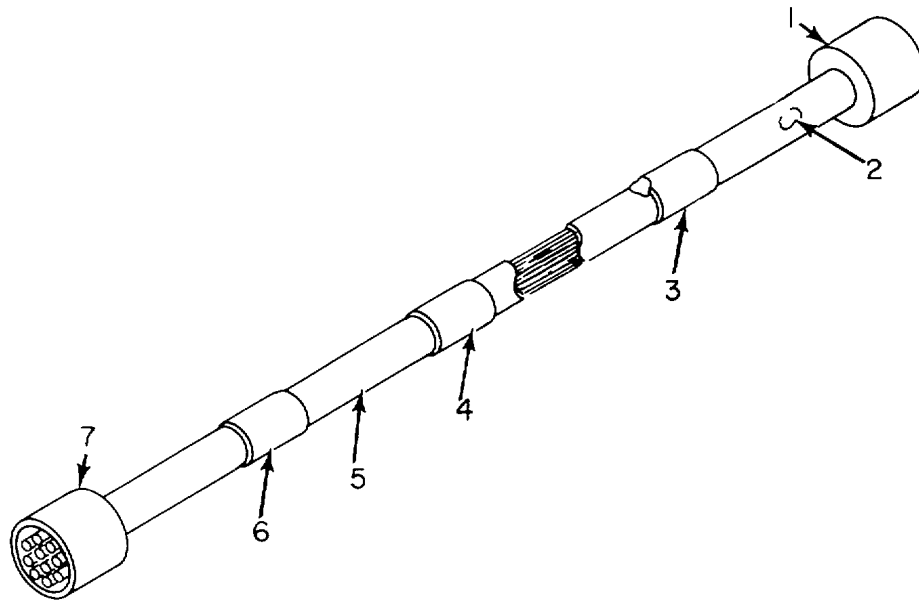
EL6CZ031

Figure 25. Cable Assembly, Special Purpose, Electrical CX-12497/U (W-3).

SECTION II

TM 11-4920-294-40P-1

(1) ILLUSTRATION		(2)	(3)	(4)	(5)	(6) DESCRIPTION	(7)	(8)
(a) FIG NO.	(b) ITEM NO.	SMR CODE	NATIONAL STOCK NUMBER	PART NUMBER	FSCM	USABLE ON CODE	U/M	QTY INC IN UNIT
						GROUP 05 CABLE ASSEMBLY, SPECIAL PURPOSE, ELECTRICAL CX-12497/U (W-3)		
25	1	XDHZZ		557026-1378	78286	SLEEVE, MARKER	EA	1
25	2	PAHZZ	5935-00-726-6487	MS3126F20-41P	96906	CONNECTOR, PLUG, ELEC	EA	1
25	3	PAHZZ	5940-00-232-5209	320559	00779	SPLICE, CONDUCTOR	EA	1
25	4	XDHZZ		S57026-1379	78286	SLEEVE, MARKER	EA	1
25	5	XDHZZ		3-4TYPEFFORM UBLA CK	81349	SLEEVING, INSULATING	FT	V
25	6	XDHZZ		557026-1720	78286	SLEEVE, MARKER	EA	1
25	7	PAHZZ	5935-00-724-7592	MS3126F20-41S	96906	CONNECTOR, PLUG, ELEC	EA	1
					69			



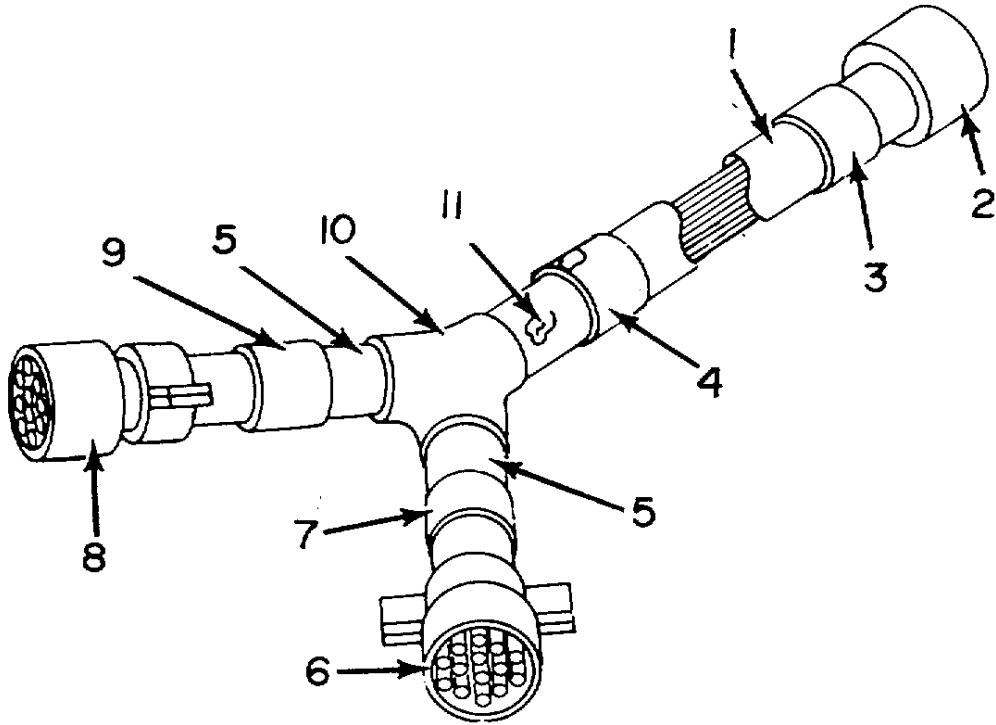
EL6CZ032

Figure 26. Cable Assembly, Special Purpose, Electrical CX-12498/U (W-4).

SECTION II

TM 11-4920-294-40P-1

(1) ILLUSTRATION		(2)	(3)	(4)	(5)	(6) DESCRIPTION	(7)	(8)
(a) FIG NO.	(b) ITEM NO.	SMR CODE	NATIONAL STOCK NUMBER	PART NUMBER	FSCM	USABLE ON CODE	U/M	QTY INC IN UNIT
						GROUP 06 CABLE ASSEMBLY, SPECIAL PURPOSE, ELECTRICAL CX-12498/U (W-4)		
26	1	PAHZZ	5935-00-912-6416	MS3126F16-26PZ	96906	CONNECTOR, PLUG, ELEC	EA	1
26	2	PAHZZ	5940-00-232-5209	320559	00779	SPLICE, CONDUCTOR	EA	1
26	3	XDHZZ		SS7026-I380	78286	SLEEVE, MARKER	EA	1
26	4	XDHZZ		557026-1381	78286	SLEEVE, MARKER	EA	1
26	5	XDHZZ		1-2TYPEFOR MUBLA CK	81349	SLEEVING, INSULATING	FT	V
26	6	XDHZZ		SS7026-17T2	78286	SLEEVE, MARKER	EA	1
26	7	PAHZZ	5935-00-765-5988	MS3126F16-26S	96906	CONNECTOR, PLUG, ELEC	EA	1
					71			



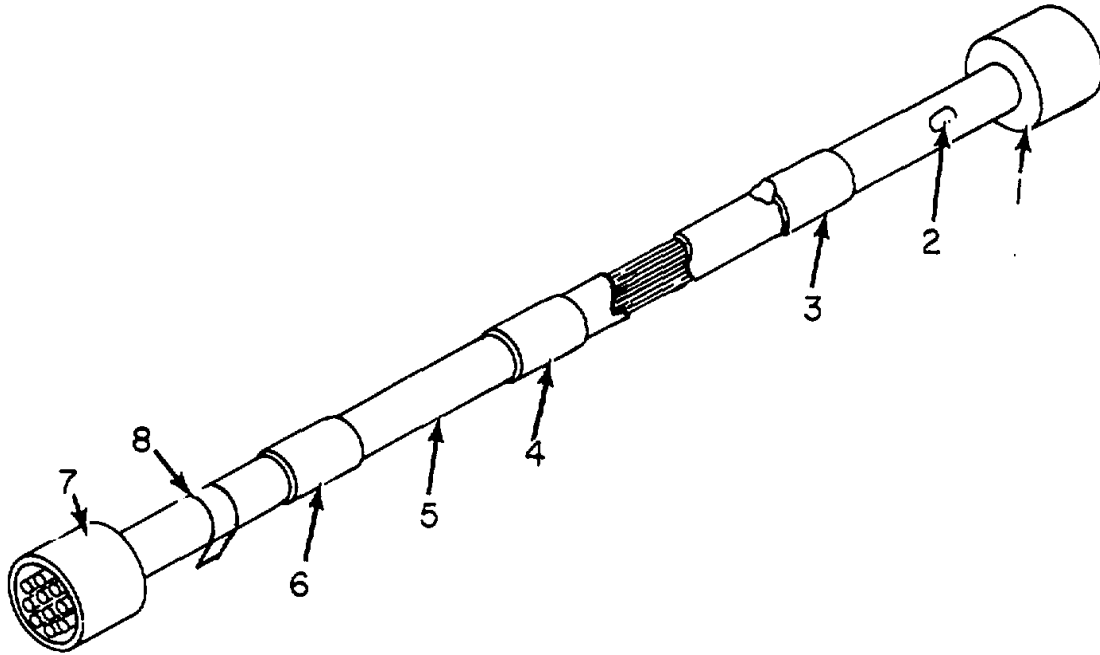
EL6CZ033

Figure 27. Cable Assembly, Special Purpose, Electrical CX-12499/U (W-5).

SECTION II

TM 11-4920-294-40P-1

(1) ILLUSTRATION		(2)	(3)	(4)	(5)	(6) DESCRIPTION	(7)	(8)
(a) FIG NO.	(b) ITEM NO.	SMR CODE	NATIONAL STOCK NUMBER	PART NUMBER	FSCM	USABLE ON CODE	U/M	QTY INC IN UNIT
						GROUP 07 CABLE ASSEMBLY, SPECIAL PURPOSE, ELECTRICAL CX-12499/U (W-5)		
27	1	XDHZZ		1-2TYPEFORMULBA CK	81349	SLEEVING, INSULATING	FT	V
27	2	PAHZZ	5935-00-726-6519	MS3126F10-6P	96906	CONNECTOR, PLUG.ELEC	EA	1
27	3	XDHZZ		SS7026-1382	78286	SLEEVE, MARKER	EA	1
27	4	XDHZZ		SS7026-1383	78286	SLEEVE, MARKER	EA	1
27	5	XDHZZ		1-4TYPEFFORMUBLA CK	81349	SLEEVING, INSULATING	FT	V
27	6	PAHZZ	5935-00-945-6076	MS3126F10-6SW	96906	CONNECTOR, PLUG, ELE	EA	1
27	7	XDHZZ		SS7026-1723	78286	SLEEVE, MARKER	EA	1
27	8	PAHZZ	5935-00-715-2756	MS3126F10-6S	96906	CONNECTOR, PLUG, ELEC	EA	1
27	9	XDHZZ		SS7026-1722	78286	SLEEVE, MARKER	EA	1
27	10	PAHZZ	5970-00-431-6735	SS7073}-1801	78286	BOOT	EA	1
27	11	PAHZZ	5940-00-232-5209	320559	00779	SPLICE, CONDUCTOR.....	EA	1
					73			



EL6CZ034

Figure 28. Cable Assembly, Special Purpose, Electrical CX-12500/U (W-6).

SECTION II

TM 11-4920-294-40P-1

(1) ILLUSTRATION		(2)	(3)	(4)	(5)	(6) DESCRIPTION	(7)	(8)
(a) FIG NO.	(b) ITEM NO.	SMR CODE	NATIONAL STOCK NUMBER	PART NUMBER	FSCM	USABLE ON CODE	U/M	QTY INC IN UNIT
						GROUP 08 CABLE ASSEMBLY, SPECIAL PURPOSE, ELECTRICAL CX-12500/U (W-6)		
28	1	PAHZZ	5935-00-730-9955	PT06SE12-8PSR	77820	CONNECTOR, PLUG, ELEC	EA	1
28	2	PAHZZ	5940-00-232-5209	320559	00779	SPLICE, CONDUCTOR	EA	1
28	3	XDHZZ		SS7026-1384	78286	SLEEVE, MARKER	EA	1
28	4	XDHZZ		SS7026-1385	78286	SLEEVE, MARKER	EA	1
28	5	XDHZZ		1-4TYPEFFDRMUBLA		SLEEVING, INSULATING	FT	V
				CK	81349			
28	6	XDHZZ		SS7026-1745	78286	SLEEVE, MARKER	EA	1
28	7	PAHZZ	5935-00-542-9907	MS3106E22-145	96906	CONNECTOR, PLUG, ELEC	EA	1
28	B	PAHZZ	5935-00-223-0572	MS3057-12A	96906	ADAPTER, CABLE CLAMP.....	EA	1
					75			

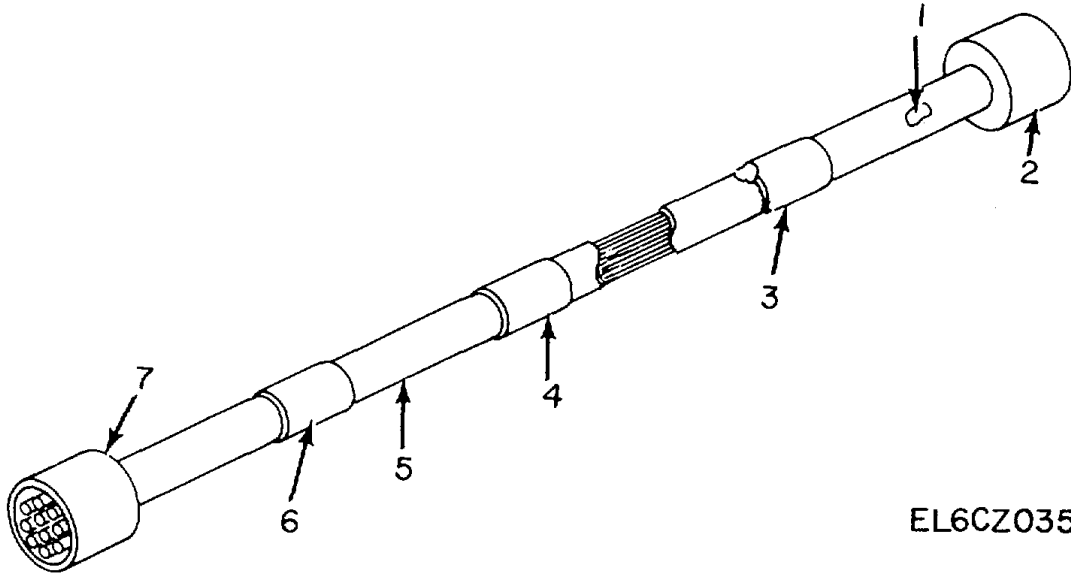
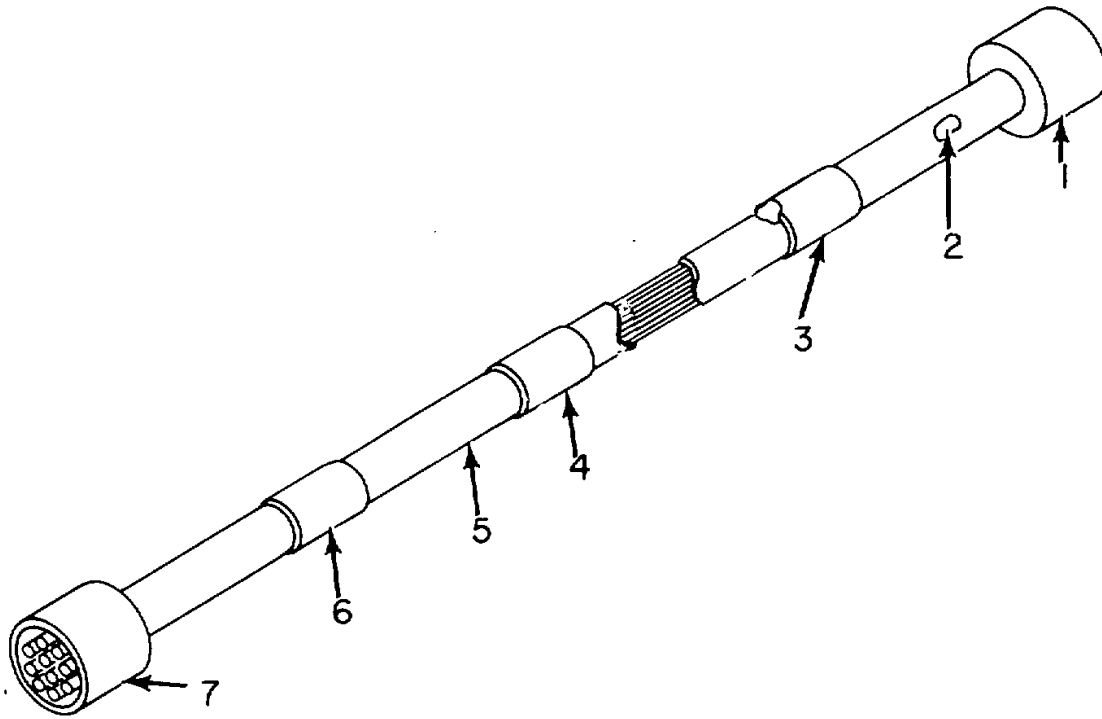


Figure 29. Cable Assembly, Special Purpose, Electrical CX-12501/U (W-7).

SECTION II

TM 11-4920-294-40P-1

(1) ILLUSTRATION		(2)	(3)	(4)	(5)	(6) DESCRIPTION	(7)	(8)
(a) FIG NO.	(b) ITEM NO.	SMR CODE	NATIONAL STOCK NUMBER	PART NUMBER	FSCM	USABLE ON CODE	U/M	QTY INC IN UNIT
						GROUP 09 CABLE ASSEMBLY, SPECIAL PURPOSE, ELECTRICAL CX-12501 (W-7)		
29	1	PAHZZ	5940-00-232-5209	320559	00779	SPLICE	EA	1
29	2	PAHZZ	5935-00-051-3728	PT06SE14-18PSR	77820	CONNECTOR, PLUG, ELEC	EA	1
29	3	XDHZZ		SS7026-1386	78286	SLEEVE, MARKER	EA	1
29	4	XDHZZ		SS7026-1387	78286	SLEEVE, MARKER	EA	1
29	5	XDHZZ		1-4TYPEFFORM UBLA CK		SLEEVING, INSULATING	FT	V
29	6	XDHZZ		SS7026-1725	78286	SLEEVE, MARKER	EA	1
29	7	PAHZZ	5935-00-724-7577	MS3126F14-L25	96906	CONNECTOR, PLUG, ELEC	EA	1
					77			



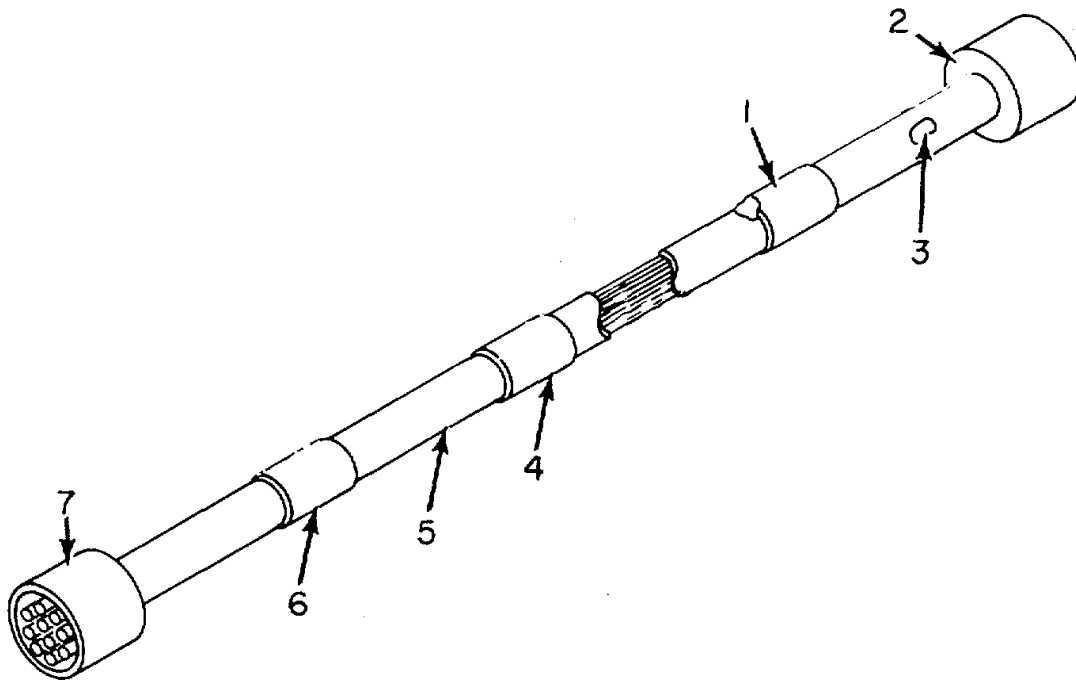
EL6CZ036

Figure 30. Cable Assembly, Special Purpose, Electrical CX-12502/ASM-417 (W-8).

SECTION II

TM 11-4920-294-40P-1

(1) ILLUSTRATION		(2)	(3)	(4)	(5)	(6) DESCRIPTION	(7)	(8)
(a) FIG NO.	(b) ITEM NO.	SMR CODE	NATIONAL STOCK NUMBER	PART NUMBER	FSCM	USABLE ON CODE	U/M	QTY INC IN UNIT
						GROUP 10 CABLE ASSEMBLY, SPECIAL PURPOSE, ELECTRICAL CX-12502/ASM-417 (w-8)		
30	1	PAHZZ	5935-00-057-3728	PT065E14-18PSR	77820	CONNECTOR, PLUG, ELEC	EA	1
30	2	PAHZZ	5940-00-232-5209	320559	00779	SPLICE, CONDUCTOR	EA	1
30	3	XDHZZ		SS7026-1386	78286	SLEEVE, MARKER	EA	1
30	4	XDHZZ		557026-1388	78286	SLEEVE, MARKER	EA	1
30	5	XDHZZ		1-4TYPEFFORN UBLA CK		SLEEVING, INSULATING	FT	V
30	6	XDHZZ		557026-1726	78286	SLEEVE, MARKER	EA	1
30	7	PAHZZ	5935-00-731-0139	MS3126F12-10S	96906	CONNECTOR, PLUG, ELEC	EA	1
					79			



EL6CZ037

Figure 31. Cable Assembly, Special Purpose, Electrical CX-12503/U (W-9).

SECTION II

TM 11-4920-294-40P-1

(1) ILLUSTRATION		(2)	(3)	(4)	(5)	(6) DESCRIPTION	(7)	(8)
(a) FIG NO.	(b) ITEM NO.	SMR CODE	NATIONAL STOCK NUMBER	PART NUMBER	FSCM	USABLE ON CODE	U/M	QTY INC IN UNIT
						GROUP 11 CABLE ASSEMBLY, SPECIAL PURPOSE, ELECTRICAL CX-12503/U (W-9)		
31	1	XDHZZ		SS7026-1389	78286	SLEEVE, MARKER	EA	1
31	2	PAHZZ	5935-00-912-6427	MS3L26F16-26PY	96906	CONNECTOR, PLUG, ELEC	EA	1
31	3	PAHZZ	5940-00-232-5209	320559	00779	SPLICE, CONDUCTOR.....	EA	1
31	4	XDHZZ		SS7026-1390	78286	SLEEVE, MARKER	EA	1
31	5	XDHZZ		1-2TYPEFORM UBLA CK	81349	SLEEVING, INSULATING	FT	V
31	6	XDHZZ		SS7026-1727	78286	SLEEVE, MARKER	EA	1
31	7	PAHZZ	5935-00-765-5988	MS3126F16-26S	96906	CONNECTOR, PLUG ELEC	EA	1
					81			

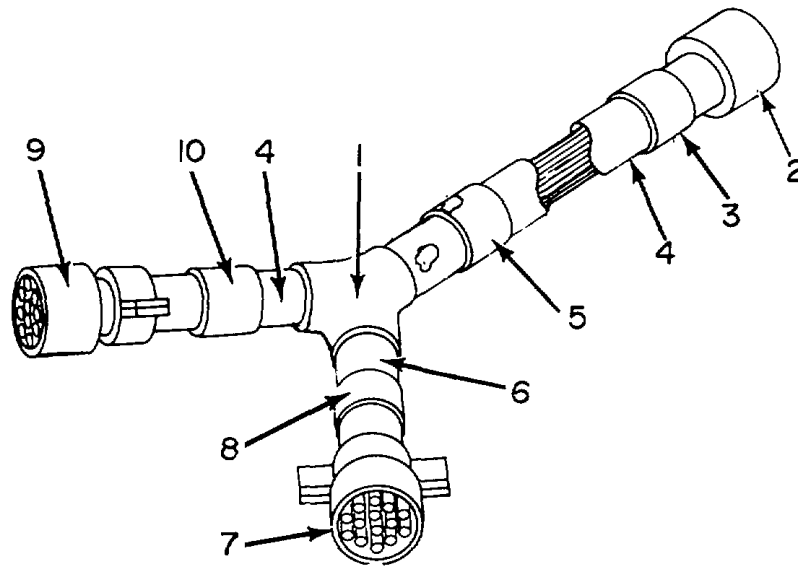
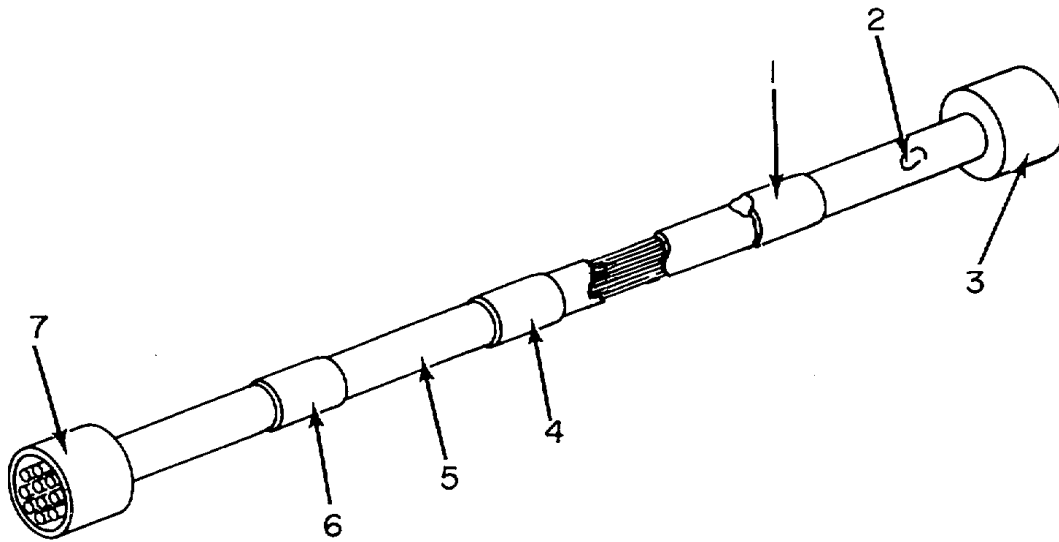


Figure 32. Cable Assembly, Special Purpose, Electrical CX-12504/ASM-417 (W-10).

SECTION II

TM 11-4920-294-40P-1

(1) ILLUSTRATION		(2)	(3)	(4)	(5)	(6) DESCRIPTION	(7)	(8)
(a) FIG NO.	(b) ITEM NO.	SMR CODE	NATIONAL STOCK NUMBER	PART NUMBER	FSCM	USABLE ON CODE	U/M	QTY INC IN UNIT
						GROUP 12 CABLE ASSEMBLY, SPECIAL PURPOSE, ELECTRICAL CX-12504/ASM417 (W-10)		
32	1	PAHZZ	5970-00-431-6735	557073-1801	78286	BOOT	EA	1
32	2	PAHZZ	5935-00-779-8606	MS3126F2-39P	96906	CONNECTOR, PLUG, ELEC	EA	1
32	3	XDHZZ		SS7026-1391	78286	SLEEVE, MARKER	EA	1
32	4	XDHZZ		1-2TYPEFFORN UBLA CK	81349	SLEEVING, INSULATING	FT	V
32	5	XDHZZ		SS7026-1392	78286	SLEEVE, MARKER	EA	1
32	6	XDHZZ		1-4TYPEFFORN UBLA CK	81349	SLEEVING INSULATING	FT	V
32	7	XDHZZ		PT06SE11-4SWSR	77820	CONNECTOR, PLUG, ELEC	EA	1
32	8	XDHZZ		SS7026-1729	78286	SLEEVE, MARKER	EA	1
32	9	PAHZZ	5935-00-947-8043	PT06SE18-32SSR	77820	CONNECTOR, PLUG, ELEC	EA	1
32	10	XDHZZ		557026-1728	78286	SLEEVE, MARKER	EA	1
					83			



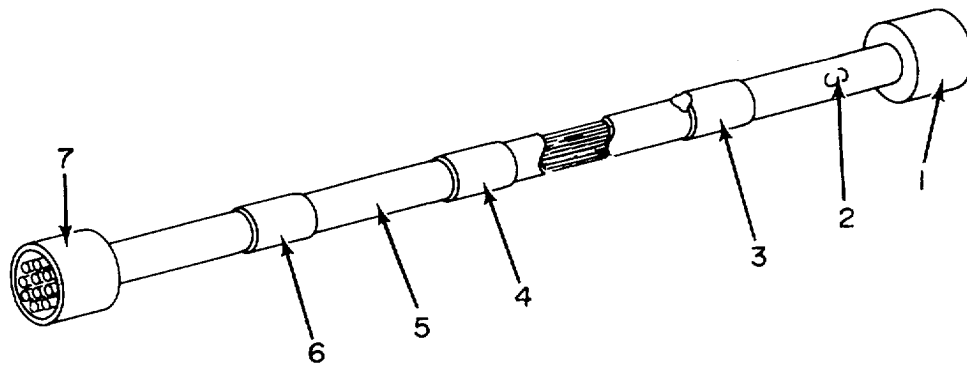
EL6CZ039

Figure 33. Cable Assembly, Special Purpose, Electrical CX-12505/U (W-11).

SECTION II

TM 11-4920-294-40P-1

(1) ILLUSTRATION		(2)	(3)	(4)	(5)	(6) DESCRIPTION	(7)	(8)
(a) FIG NO.	(b) ITEM NO.	SMR CODE	NATIONAL STOCK NUMBER	PART NUMBER	FSCM	USABLE ON CODE	U/M	QTY INC IN UNIT
						GROUP 13 CABLE ASSEMBLY, SPECIAL PURPOSE, ELECTRICAL CX-12505/U (W-11)		
33	1	XDHZZ		SS7026-1393	78286	SLEEVE, MARKER	EA	1
33	2	PAHZZ	5940-00-232-5209	320559	00779	SPLICE, CONDUCTOR	EA	1
33	3	XDHZZ		PT06SE12-SPWSR	77820	CONNECTOR, PLUG, ELEC	EA	1
33	4	XDHZZ		SS7026-1394	78286	SLEEVE, MARKER	EA	1
33	5	XDHZZ		1-4TYPEFFORN		SLEEVING, INSULATING	FT	V
				UBLA CK	81349			
33	6	XDHZZ		SS7026-1730	78286	SLEEVE, MARKER	EA	1
33	7	PAHZZ	5935-00-677-2654	PT06SE1Z-8SSR	77820	CONNECTOR, PLUG, ELEC	EA	1
					85			



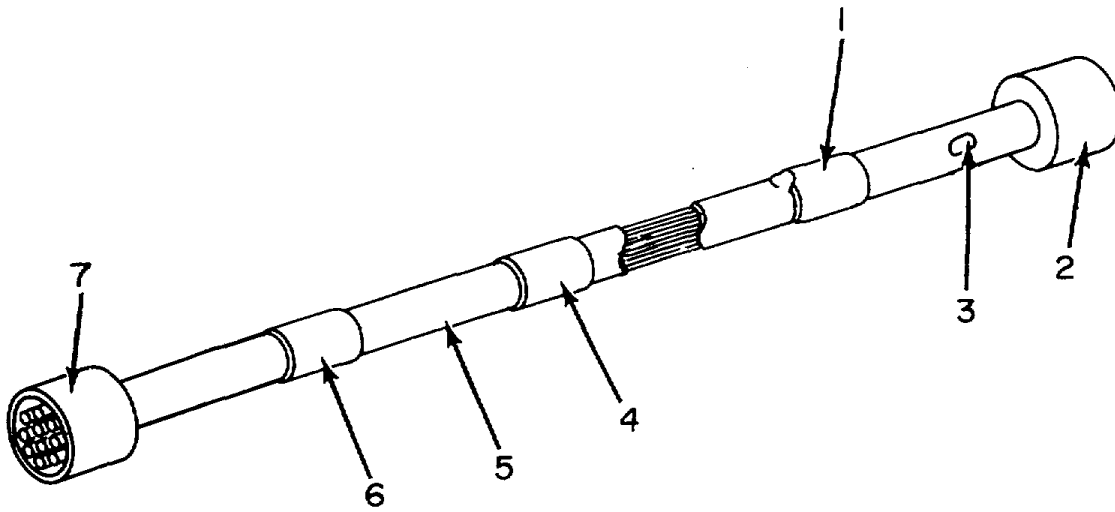
EL6CZ040

Figure 34. Cable Assembly, Special Purpose, Electrical CX-12506/U (W-12).

SECTION II

TM 11-4920-294-40P-1

(1) ILLUSTRATION		(2)	(3)	(4)	(5)	(6) DESCRIPTION	(7)	(8)
(a) FIG NO.	(b) ITEM NO.	SMR CODE	NATIONAL STOCK NUMBER	PART NUMBER	FSCM	USABLE ON CODE	U/M	QTY INC IN UNIT
						GROUP 14 CABLE ASSEMBLY, SPECIAL PURPOSE, ELECTRICAL CX-12506/U (W-12)		
34	1	PAHZZ	5935-00-761-3893	MS3126FI6-26PW	96906	CONNECTOR, PLUG, ELEC	EA	1
34	2	PAHZZ	5940-00"232-5209	320559	00779	SPLICE, CONDUCTOR.....	EA	1
34	3	XDHZZ		SS7026-1395	78286	SLEEVE, MARKER	EA	1
34	4	XDHZZ		557026-1396	78286	SLEEVE, MARKER	EA	1
34	5	XDHZZ		1-2TYPEFORM		SLEEVING, INSULATING	FT	V
				UBLA CK	81349			
34	6	XDHZZ		55S7026-1732	78286	SLEEVE, MARKER	EA	1
34	7	PAHZZ	5935-00-724-7592	MS3126F20-415	96906	CONNECTOR, PLUG, ELEC	EA	1
					87			



EL6CZ04I

Figure 35. Cable Assembly, Special Purpose, Electrical CX-12507/U (W-13).

SECTION II

TM 11-4920-294-40P-1

(1) ILLUSTRATION		(2)	(3)	(4)	(5)	(6) DESCRIPTION	(7)	(8)
(a) FIG NO.	(b) ITEM NO.	SMR CODE	NATIONAL STOCK NUMBER	PART NUMBER	FSCM	USABLE ON CODE	U/M	QTY INC IN UNIT
						GROUP 15 CABLE ASSEMBLY, SPECIAL PURPOSE, ELECTRICAL CX-12507/U (W-13)		
35	1	XDHZZ		SS7026-1397	78286	SLEEVE, MARKER	EA	1
35	2	PAHZZ	5935-00-765-5986	MS3126F18-32PW	96906	CONNECTOR, PLUG, ELEC	EA	1
35	3	PAHZZ	5940-00-232-5209	320559	00779	SPLICE, CONDUCTOR.....	EA	1
35	4	XDHZZ		SS7026-1398	78286	SLEEVE, MARKER	EA	1
35	5	XDHZZ		1-2TYPEFORM		SLEEVING, INSULATING	FT	V
				UBLA CK	81349			
35	6	XDHZZ		557026-1731	78286	SLEEVE, MARKER	EA	1
35	7	PAHZZ	5935-00-780-576L	MS3126F18-32S	96906	CONNECTOR, PLUG, ELEC	EA	1
					89			

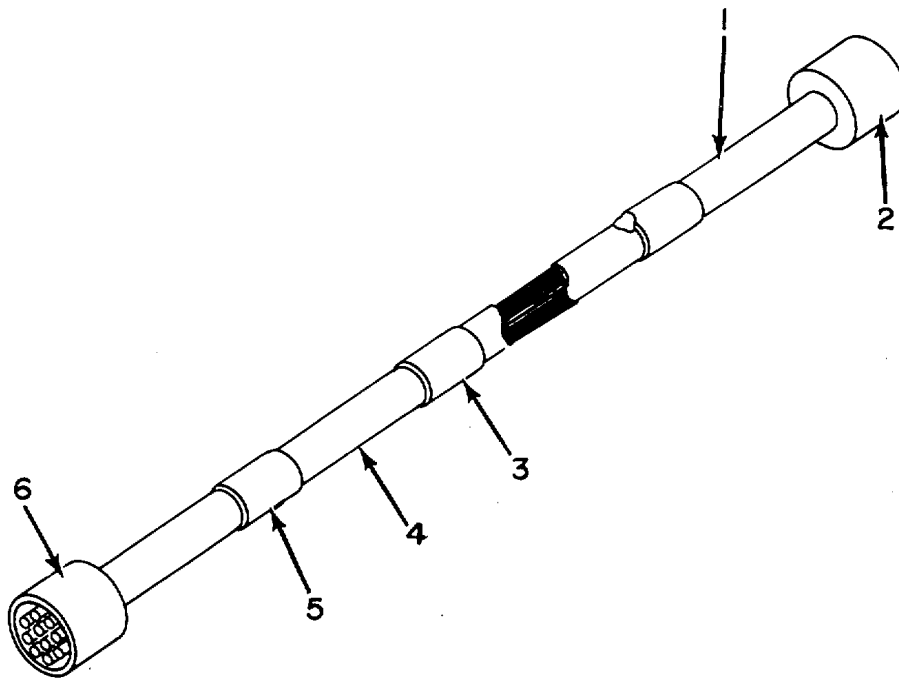


Figure 36. Cable Assembly, Special Purpose, Electrical CX-12630/U (W-14).

SECTION II

TM 11-4920-294-40P-1

(1) ILLUSTRATION		(2)	(3)	(4)	(5)	(6) DESCRIPTION	(7)	(8)
(a) FIG NO.	(b) ITEM NO.	SMR CODE	NATIONAL STOCK NUMBER	PART NUMBER	FSCM	USABLE ON CODE	U/M	QTY INC IN UNIT
						GROUP 16 CABLE ASSEMBLY, SPECIAL PURPOSE, ELECTRICAL CX-12630/U (W-14)		
36	1	XDHZZ		57026-1747	78286	SLEEVE, MARKER	EA	1
36	2	PAHZZ	5935-00-765-5989	MS3126F14-19S	96906	CONNECTOR, PLUG, ELEC	EA	1
36	3	XDHZZ		SS7026-1746	78286	SLEEVE, MARKER	EA	1
36	4	XDHZZ		1-4TYPEFFORM UBLA CK	81349	SLEEVING, INSULATING	FT	V
36	5	XDHZZ		557026-1724	18286	SLEEVE, MARKER	EA	1
36	6	PAHZZ	5935-00-677-2654	PT06SE12-8PSR	77820	CONNECTOR, PLUG, ELEC	EA	1
					91			

SECTION IV

TM 11-6625-3146-24P

NATIONAL STOCK NUMBER AND PART NUMBER INDEX

NOTE: LATEST NATIONAL STOCK NUMBER AND PART NUMBER ASSIGNMENTS ARE INCLUDED AT END OF INDEX.

NATIONAL STOCK NUMBER AND PART NUMBER INDEX

NATIONAL STOCK NUMBER IND

STOCK NUMBER	FIG. NO.	ITEM NO.	STOCK NUMBER	FIG. NO.	ITEM NO.
5905-00-050-1128	14	21	6615-00-249-4443	19	25
5999-00-050-1197	21	9	6615-00-249-4445	11	8
5999-00-050-1197	22	10	6615-00-249-4446	11	6
5925-00-054-0177	4	80	5935-00-259-2019	6	14
5935-00-057-3728	29	2	5935-00-259-2019	15	10
5935-00-057-3728	30	1	5935-00-259-2019	19	31
5310-00-058-1823	4	45	5935-00-280-1935	12	33
5310-00-058-1823	12	37	5935-00-283-3394	15	20
5905-00-059-7486	21	2	5935-00-283-3394	17	9
5905-00-060-2470	8	6	5340-00-291-3650	12	3
5935-00-060-6320	17	19	5340-00-291-3650	19	37
5935-00-060-6320	23	9	6615-00-349-9229	6	18
5905-00-064-0555	4	84	6615-00-349-9230	8	7
5905-00-064-0555	4	95	6615-00-349-9231	6	6
5905-00-064-0555	14	2	5961-00-402-9264	8	5
5905-00-064-0555	14	13	5905-00-417-7242	19	8
5905-00-064-0555	21	3	5905-00-428-8504	4	10
5905-00-079-3194	4	100	5940-00-433-1021	4	65
5935-00-079-6718	6	16	6625-00-438-4668	15	1
5935-00-079-6718	15	9	6625-00-438-4669	12	1
5961-00-087-6047	4	90	6625-00-439-6150	19	1
5961-00-087-6047	4	91	6625-00-439-6151	19	34
5961-00-087-6047	21'		5940-00-441-9404	4	55
5961-00-087-6047	22	8	6150-00-449-5109	17	15
5905-00-087-6524	4	98	6625-00-449-7477	15	13
5905-00-087-6524	14	4	5910-00-450-1309	12	42
5905-00-087-6524	14	6	5910-00-450-8613	2	11
5905-00-087-6524	14	11	5910-00-450-8613	22	1
5961-00-107-6050	4	51	5930-00-450-9725	4	3
5961-00-107-6050	4	58	5930-00-450-9725	6	8
5940-00-115-0765	21	15	5940-00-451-4962	4	67
5940-00-115-0765	22	16	5962-00-453-7715	8	8
9905-00-136-9053	15	14	5999-00-456-4714	8	4
9905-00-138-5610	3	4	5940-00-466-0216	4	82
6240-00-155-7836	4	72	5940-00-466-0216	12	18
6240-00-155-7836	15	33	5970-00-480-1321	4	30
6240-00-155-7836	19	18	5995-00-480-5722	17	8
5940-00-168-3446	4	86	9905-00-498-2485	12	32
5950-00-172-1278	4	42	5990-00-498-9430	4	63
5310-00-184-8966	4	32	5990-00-498-9430	15	5
5310-00-184-8966	16	3	5935-00-510-1279	15	19
6625-00-186-6138	4	48	5935-00-539-4282	4	24
5310-00-187-2408	3	3	5935-00-542-9907	28	7
5310-00-187-2408	4	34	5905-00-552-2620	4	94
5310-00-187-2408	5	5	5905-00-552-2859	4	7
5310-00-187-2408	6	11	5940-00-557-1629	4	71
5310-00-187-2408	12	10	5940-00-557-1629	17	13
5310-00-187-2408	15	7	6625-00-563-5512	12	40
5310-00-187-2408	18	5	6625-00-563-5514	16	2
5310-00-187-2408	19	2	5365-00-574-8176	5	9
5310-00-188-7721	4	61	5365-00-574-8176	18	9
5310-00-188-7721	12	4	5935-00-577-2336	4	102
5310-00-188-7721	15	4	5935-00-577-2336	6	3
5310-00-188-7721	19	9	5935-00-577-2336	12	44
5930-00-189-6579	4	5	5935-00-577-2336	15	J2
5930-00-190-6941	4	8	5935-00-577-2336	19	40
5935-00-223-0572	23	11	5935-00-577-2337	15	30
5935-00-223-0572	28	8	5935-00-577-2338	15	28
5961-00-226-8579	21	8	5961-00-577-6084	14	14
5961-00-226-8579	22	9	5961-00-577-6084	16	5
6625-00-230-3801	12	16	5905-00-577-6442	4	56
5940-00-232-5209	23	1	5935-00-578-3200	23	3
5940-00-232-5209	24	3	5310-00-582-5677	11	5
5940-00-232-5209	25	3	5325-00-584-6639	11	10
5940-00-232-5209	26	2	5365-00-598-5394	17	18
5940-00-232-5209	27	11	5365-00-598-5416	17	12
5940-00-232-5209	28	2	5930-00-615-7880	4	81
5940-00-232-5209	30	2	5930-00-615-9376	4	78
5940-00-232-5209	31	3	6615-00-617-9006	21	4
5940-00-232-5209	33	2	6615-00-617-9006	22	4
5940-00-232-5209	34	2	5365-00-632-3102	12	14
5940-00-232-5209	35	3	5325-00-638-8088	6	17
6615-00-233-9238	6	1	5930-00-655-1513	4	73
9905-00-239-5984	15	16	5930-00-655-1513	12	6
6615-00-240-9554	15	2	5930-00-655-1514	15	36
6615-00-240-9555	19	35	5930-00-655-1515	4	76
6615-00-240-9556	19	36	5930-00-655-1515	12	9
5310-00-243-2259	11	9	5930-00-655-1515	19	43
6615-00-249-4442	12	27	5930-00-655-1517	19	42
6615-00-249-4443	12	30	5930-00-655-1520	15	35

NATIONAL STOCK NUMBER AND PART NUMBER INDEX

NATIONAL STOCK NUMBER INDEX			NATIONAL STOCK NUMBER INDEX		
STOCK NUMBER	FIG. NO.	ITEM NO.	STOCK NUMBER	FIG. NO.	ITEM NO.
5930-00-655-1575	15	37	5365-00-828-8526	19	29
5930-00-655-1575	19	41	5905-00-883-9198	4	83
5935-00-677-2654	33	7	5905-00-883-9198	14	1
5935-00-681-5690	15	25	5905-00-883-9198	14	5
6210-00-682-9833	4	25	5905-00-883-9198	14	10
6210-00-682-9833	15	40	5935-00-887-6409	4	20
6210-00-682-9833	19	19	5305-00-889-2997	4	89
5310-00-685-2973	11	7	5305-00-889-2997	5	2
5935-00-685-9396	15	31	5305-00-889-2997	6	20
5935-00-688-4026	17	17	5305-00-889-2997	12	20
5935-00-688-4026	23	8	5305-00-889-2997	15	15
5990-00-688-4982	5	1	5305-00-889-2997	18	2
5990-00-688-4982	18	1	5305-00-889-2997	19	13
5841-00-694-2072	5	8	5305-00-889-2998	3	1
5841-00-694-2072	18	8	5305-00-889-2998	4	44
6615-00-700-3982	5	7	5305-00-889-2998	6	10
6615-00-700-3982	18	7	5305-00-889-2998	15	11
5950-00-704-9794	4	43	5305-00-889-3000	15	24
5935-00-715-2756	27	8	5305-00-889-3000	19	23
5935-00-717-3153	4	19	5305-00-889-3001	4	16
5940-00-718-1721	4	88	5305-00-889-3001	12	2
5940-00-718-1721	12	17	5305-00-889-3001	19	38
5940-00-718-1721	12	41	5970-00-892-3782	12	25
5940-00-718-1721	16	6	6240-00-892-4420	4	14
5935-00-724-7577	29	7	6240-00-892-4420	15	41
5935-00-724-7580	17	2	5905-00-893-9499	19	4
5935-00-724-7585	13	3	5340-00-896-1090	15	18
5935-00-724-7592	17	4	5935-00-899-6869	17	14
5935-00-724-7592	25	7	5935-00-899-6869	23	13
5935-00-724-7592	34	7	5935-00-901-0922	4	13
5310-00-725-4715	11	1	5905-00-901-1584	7	6
5935-00-726-6487	25	2	5935-00-912-6416	26	1
5935-00-726-6504	24	2	5935-00-912-6427	31	2
5935-00-726-6519	27	2	5905-00-913-3073	21	11
5905-00-727-5314	21	13	5905-00-913-3073	22	12
5905-00-727-5314	22	14	5999-00-916-6189	21	18
5905-00-727-5324	21	14	5999-00-916-6189	22	19
5905-00-727-5324	22	15	5935-00-917-7163	19	30
5905-00-730-0333	4	85	5355-00-918-4029	4	9
5905-00-730-1490	21	12	5355-00-918-4029	12	22
5905-00-730-1490	22	13	5355-00-918-4029	15	17
5935-00-730-9955	28	1	5355-00-918-4029	19	16
5935-00-731-0139	30	7	5935-00-923-3788	4	12
5935-00-761-3893	34	1	5935-00-923-3815	4	66
5935-00-763-6110	4	64	5950-00-928-5528	4	39
5935-00-764-4033	4	14	5950-00-928-5528	16	1
5935-00-765-5986	35	2	5925-00-931-5905	15	38
5935-00-765-5988	26	7	5950-00-931-6229	4	38
5935-00-765-5988	31	7	5340-00-934-0534	12	29
5935-00-765-5989	36	2	5340-00-934-0534	19	15
5935-00-779-8606	32	2	5935-00-936-7376	17	11
5935-00-780-5761	24	7	5305-00-944-8271	12	12
5935-00-780-5761	35	7	5305-00-944-8271	19	5
6210-00-806-9421	15	34	5935-00-945-6076	27	6
5310-00-807-1465	4	62	5935-00-946-1947	4	17
5310-00-807-1465	12	5	5935-00-947-8043	32	9
5310-00-807-1465	15	3	5930-00-952-6163	4	77
5310-00-807-1465	19	10	5365-00-954-0931	4	29
5310-00-807-1466	4	33	5305-00-954-3938	12	28
5310-00-807-1466	16	4	5905-00-954-8708	22	3
6210-00-808-8604	4	26	5305-00-957-7815	15	22
6210-00-808-8604	15	42	5905-00-975-1144	4	49
5905-00-811-4821	4	99	5340-00-975-1592	15	23
5905-00-811-4821	14	3	5305-00-983-6730	4	68
5905-00-811-4821	14	7	5305-00-983-6730	6	4
5905-00-811-4821	14	9	5305-00-983-6730	12	24
5310-00-811-6419	3	2	5305-00-983-6730	15	21
5310-00-811-6419	4	35	5305-00-983-6730	19	33
5310-00-811-6419	5	6	5905-00-983-6914	8	1
5310-00-811-6419	6	12	5905-00-983-6914	14	18
5310-00-811-6419	12	11	5961-00-984-3156	14	15
5310-00-811-6419	15	8	5961-00-984-3156	14	20
5310-00-811-6419	18	6	5961-00-984-3156	21	10
5310-00-811-6419	19	3	5961-00-984-3156	22	11
5940-00-813-0698	4	70	5305-00-984-4977	5	10
5940-00-813-0698	13	2	5305-00-984-4977	12	13
5940-00-813-0698	17	6	5305-00-984-4977	18	10
5940-00-813-0698	20	1	5305-00-984-4979	4	27
5905-00-814-3815	21	5	5305-00-984-4979	12	38
5365-00-828-8526	6	15	5305-00-984-4980	4	92

NATIONAL STOCK NUMBER AND PART NUMBER INDEX

NATIONAL STOCK NUMBER INDEX					
STOCK NUMBER	FIG. NO.	ITEM NO.	STOCK NUMBER	FIG. NO.	ITEM NO.
5305-00-984-4989	19	11	5935-00-988-4231	4	22
5305-00-984-6224	12	26	5935-00-988-5470	4	21
5305-00-984-6224	19	24	5905-00-990-2832	22	7
5305-00-988-1167	4	54	5935-00-990-4558	4	23
5905-00-988-1923	22	5	5905-00-993-1363	4	97
5905-00-988-2307	4	93	5935-00-994-7151	15	29
5905-00-988-2307	8	2	5905-00-995-4779	22	6
5905-00-988-2317	14	19			

NATIONAL STOCK NUMBER INDEX							
PART NUMBER	FSCM	FIG. NO.	ITEM NO.	PART NUMBER	FSCM	FIG. NO.	ITEM NO.
AN960P02	88044	4	47	MS16108-3A	96906	12	44
AN960PD2	88044	12	36	MS16108-3A	96906	15	32
AN960PD4	88044	3	3	MS16108-3A	96906	19	40
AN960P04	88044	4	34	MS16108-5A	96906	15	30
AN960PD4	88044	5	5	MS16108-6A	96906	15	28
AN960PD4	88044	6	11	MS16108-7A	96906	15	25
AN960PD4	88044	12	10	MS16108-8A	96906	15	26
AN960PD4	88044	15	7	MS16108-9A	96906	15	29
AN960PD4	88044	18	5	MS21042-02	96906	4	45
AN960PD4	88044	19	2	MS21042-02	96906	12	37
AN960P06	88044	4	61	MS21042-04	96906	3	2
AN960PD6	88044	12	4	MS21042-04	96906	4	35
AN960PD6	88044	15	4	MS21042-04	96906	5	6
AN960PD6	88044	19	9	MS21042-04	96906	6	12
AN960PD8	88044	4	32	MS21042-04	96906	12	11
AN960PD8	88044	16	3	MS21042-04	96906	15	8
A3-7777	81640	4	77	MS21042-04	96906	18	6
CLS5032-3	46384	11	1	MS21042-04	96906	19	3
CL21BN700SPES	81349	4	57	MS21042-06	96906	4	62
CL21BN700SPE5	81349	4	50	MS21042-06	96906	12	5
CX-12495/ASM-417	80058	1	8	MS21042-06	96906	15	3
CX-12496/U	80058	1	9	MS21042-06	96906	19	10
CX-12497/U	80058	1	10	MS21042-08	96906	4	33
GX-12498/U	80058	1	11	MS21042-08	96906	16	4
CX-12499/U	80058	1	12	MS24693-38	96906	4	59
CX-12500/U	80058	1	13				
CX-12501/U	80058	1	14	MS24693S4	96906	15	22
CX-12502/ASM-417	80058	1	15	MS25036-101	96906	4	70
CX-12503/U	80058	1	16	MS25036-101	96906	13	2
CX-12504/ASM-417	80058	1	3	MS25036-101	96906	17	6
CX-12505/U	80058	1	4	MS25036-101	96906	20	1
CX-12506/U	80058	1	5	MS25036-149	96906	4	71
CX-12507/U	80058	1	6	MS25036-49	96906	17	13
CX-12630/U	80058	1	7	MS25237-327	96906	4	12
CY-6961/ASM-417	80058	2	3	MS25237-327	96906	15	33
				MS25237-327	96906	19	18
				M525252NE20	96906	4	74
				MS25252NE2D	96906	15	41
DDMF50S	71468	12	31	MS25256-4	96906	15	34
EL200ATI03M	20932	8	10	MS25256-6	96906	4	25
FCA1	08730	4	2	MS25256-6	96906	15	40
				MS25256-6	96906	19	19
FMO2-1-4A	81349	19	17	MS25251-4	96906	4	26
JANIN645	81349	4	90	MS25257-4	96906	15	42
JANIN645	81349	4	91	MS27039-0806	96906	12	12
JAN1N645	81349	21	7	MS27039-0806	96906	19	5
JAN1N645	81349	22	8	MS3057-12A	96906	23	11
JAN2N3331	81349	8	5	MS3057-12A	96906	28	8
JAN2N760A	81349	21	10	MS3057-128	96906	15	20
JAN2N760A	81349	22	11	MS3057-128	96900	17	9
JAN2N930	81349	21	8	MS3057-168	96906	12	33
JAN2N930	81349	22	9	MS3057-68	96906	6	14
K01SK105K	05397	21	1	MS3057-68	96906	15	10
K01SK105K	05397	22	1	MS3057-68	96906	19	31
L2-7	00141	5	3	MS3057-8A	96906	17	17
L2-7	00141	18	3	MS3057-8A	96906	23	8
MDA942-3	04713	4	51	MS3102E18-20P	96906	4	24
MDA942-3	04713	4	58	MS3106E18-20S	96906	23	3
MS15795-310	96906	11	5	MS3106E22-145	96906	28	7
MS16108-1A	96906	15	31	MS3107A16-11P	96906	17	19
MS16108-2A	96906	4	101	MS3107A16-11P	96906	23	9
MS16108-2A	96906	6	2	MS3107A20-4P	96906	17	14
MS16108-2A	96906	12	43	MS3107A20-4P	96906	23	13
MS16108-2A	96906	15	27	MS3122E10-65	96906	4	21
MS16108-2A	96906	19	39	MS3122E16-26SW	96906	4	13
MS16108-3A	96906	4	102	MS3122E16-26SY	96906	4	12
MS16108-3A	96906	6	3	MS3122E16-26SZ	96906	4	66

NATIONAL STOCK NUMBER AND PART NUMBER INDEX

PART NUMBER	FSCM	FIG. NO.	ITEM NO.	PART NUMBER	FSCM	FIG. NO.	ITEM NO.
MS3122E18-32S	96906	4	23	MS35206-237	96906	19	24
MS3122E18-32SW	96906	4	17	MS35233-81	96906	11	4
MS3122E20-39S	96906	4	642				
MS3122E20-4LS	96906	4	22	MX-8837/ASM-417	80058	2	1
MS3122E24-61S	96906	4	14	MX-8B38/ASM-417	80058	9	5
MS3126F10-6P	96906	27	2	MX-8839/ASM-417	80058	9	2
MS3126F10-6S	96906	27	8	MX-8841/ASM-417	80058	9	1
MS3126F10-6SW	96906	27	6				
MS3126F12-10S	96906	30	7	M19207-29-001	81349	19	20
MS3126F12-BPX	96906	20	4	M22684-01-0002	81349	21	13
MS3126F14-12S	96906	29	7	M22684-01-0002	81349	22	14
MS3126F14-19S	96906	36	2	M22684-01-0048	81349	21	14
MS3126F16-26PW	96906	34	1	M22684-01-0048	81349	22	15
MS3126F16-26PY	96906	31	2	M22684-01-0098	81349	21	12
MS3126F16-26PZ	96906	26	1	M22684-01-0098	81349	22	13
MS3126F16-26S	96906	26	7	M22684-01-0112	81349	21	11
MS3126F16-26S	96906	31	7	M22684-01-0112	81349	22	12
MS3126F18-32P	96906	24	2	M3074	00348	4	43
MS3126F18-32PW	96906	35	2	M39013-1-41	81349	4	79
MS3126F18-32S	96906	24	7	M39019-1-41	81349	15	38
MS3126F18-32S	96906	35	7	M39019-1-49	81349	15	39
MS3126F70-39P	96906	32	2	M39019-1-49	81349	4	80
MS3126F20-41P	96906	25	2	NAS43DA1-80	80205	15	6
MS3126F20-41S	96906	17	4	NAS43000-20	80205	6	5
MS3126F20-41S	96906	25	7	NAS43DDO-16	80205	12	14
MS3126F20-41S	96906	34	7	NAS43DDO-48	80205	4	52
MS3126F22-55S	96906	17	2	NAS43DDI-28	80205	5	9
MS3126F24-61P	96906	13	3	NAS43D01-28	80205	18	9
MS3420-10	96906	17	11	NAS43D01-62	80205	4	60
MS3420-12	96906	17	12	NAS43DO-16	80205	4	46
MS3420-12A	96906	23	12	NKS15-BR10	02615	4	31
MS3420-6A	96906	6	15				
MS3420-6A	96906	19	29	PT02SE12-85	77820	4	20
MS3420-8A	96906	23	7	PT02SE12-8SW	77820	4	19
MS3420-8A	96906	17	18	PT02SE12-8SX	77820	4	11
MS35058-21	96906	4	73	PT02SE14-18S	77820	4	18
MS35058-21	96906	12	6	PT06SE12-8PSR	77820	28	1
MS35058-22	96906	15	36	PT06SE12-8PWSR	77820	33	3
MS35058-23	96906	4	76	PT06SE12-BSSR	77820	33	7
MS35058-23	96906	12	9	PT06SE14-IBPSR	77820	29	2
MS35058-23	96906	19	43	PT06SE14-18PSR	77820	30	1
MS35058-26	96906	19	42	PT06SE18-32SSR	77820	32	9
MS35058-28	96906	15	35	PT06SE18-4SWSR	77820	32	7
MS35059-21	96906	4	78	PT066SE12-8PKSR	77820	7	1
MS35059-22	96906	15	37				
MS35059-22	96906	19	41				
MS35059-23	96906	4	75	RCR20GFI14JM	81349	7	5
MS35059-23	96906	12	7	RCR20GF565JM	81349	7	3
MS35059-26	96906	4	81	RD65PIOROG	81349	22	3
MS35206-204	96906	4	54	RD65P24R9G	81349	22	2
MS35206-207	96906	12	28	RN60DIOO1F	81349	14	19
MS35206-215	96906	4	89	RN60D1002F	81349	8	1
MS35206-215	96906	5	2	RN60D1002F	81349	14	18
MS35206-215	96906	6	20	RN60O1003F	81349	4	93
MS35206-215	96906	12	20	RN6000003F	81349	8	2
MS35206-215	96906	15	15	RN60D1004F	81349	8	6
MS35206-2L5	96906	18	2	RN60D1154F	81349	7	4
MS35206-215	96906	19	13	RN60D5492F	81349	7	6
MS35206-216	96906	3	1	RN65D1000F	81349	4	99
MS35206-216	96906	4	44	RN65D1000F	81349	14	3
MS35206-216	96906	6	10	RN6501000F	81349	14	7
MS35206-216	96906	15	11	RN6501000F	81349	14	9
MS35206-218	96906	4	68	RN6501001F	81349	4	83
MS35206-218	96906	6	4	RN6501001F	81349	14	1
MS35206-218	96906	12	24	RN65D1001F	81349	14	5
MS35206-218	96906	15	21	RN6S01001F	81349	14	10
MS35206-218	96906	19	33	RN650L002F	81349	4	84
MS35206-220	96906	5	10	RN6501002F	81349	4	95
MS35206-220	96906	12	13	RN651002F	81349	14	2
MS35206-220	96906	18	10	RN65D1002F	81349	14	13
MS35206-222	96906	4	27	RN65D1002F	81349	21	3
MS35206-222	96906	12	38	RN6501003F	81349	21	5
MS35206-223	96906	4	92	RN65D1104F	81349	22	6
MS35206-229	96906	19	11	RN6502001F	81349	4	98
MS35206-230	96906	15	24	RN6502001F	81349	14	4
MS35206-230	96906	19	23	RN6502001F	81349	14	6
MS35206-231	96906	4	16	RN6502001F	81349	14	11
MS35206-231	96906	12	2	RN6502002F	81349	22	7
MS35206-231	96906	19	38	RN6502101F	81349	4	100
MS35206-237	96906	12	26	RN65D3481F	81349	4	97

NATIONAL STOCK NUMBER AND PART NUMBER INDEX

PART NUMBER	FSCM	FIG. NO.	ITEM NO.	PART NUMBER	FSCM	FIG. NO.	ITEM NO.
RN6504990F	81349	21	2	S6170-90143-6	78286	4	3
RN65D5000F	81349	14	8	S6170-90143-6	78286	6	8
RN65D5000F	81349	14	12	S6170-90143-7	78286	4	4
RN65D5002F	81349	4	96	S6190-61072	78286	5	7
RN65D5002F	81349	14	17	S6190-61072	78286	18	7
RN65D7872F	81349	4	85	TS2-010-106-20	17554	8	9
RN70D2000F	81349	14	21				
RN75B2001F	81349	4	94	TW61511	02640	-	39
RNROB1000F	81349	4	56	TW61511	02640	16	1
RS911-6D	88818	5	1	TW61742	02640	4	38
RS911-60	88818	18	1	TW63271	OZ640	4	42
RV4NAYS202A	81349	4	10				
RV4NAYS501A	81349	4	7	WM17SA9AB	81312	19	21
RV4NAYS504A	81349	19	4	WM17SA9AC	81312	19	27
RV4TAYS500A	81349	19	8	WM17SA9ADE	81312	19	28
Ri67V510	81349	4	49	WM17SA9CDEFHJLM	81312	19	22
RW67V910	81349	22	5	WM17SA9MP	81312	19	26
R68J504	96733	12	42	091-0024-000	05574	12	25
SFSW8CIODB	12324	3	5	1-2TYPEFFORMBLACK	81349	24	5
SS1047-01	78286	4	28	1-2TYPEFFORMUBBLACK	81349	26	5
SS1047-01	78286	12	39	1-2TYPEFFORMUBBLACK	81349	31	5
557023-19	78286	4	82	1-2TYPEFFORMUBBLACK	81349	32	4
SS7023-19	78286	12	18	1-2TYPEFFORMUBBLACK	81349	34	5
SS7026-1374	78286	23	4	1-2TYPEFFORMUBBLACK	81349	35	5
SS7026-1375	78286	23	5	1-2TYPEFFORMULBACK	d8349	27	1
557026-1376	78286	24	1	1-4RNFI00BLACK	81349	20	3
SS7026-1377	78286	24	4	1-4TYPEFFORMU8LACK	81349	23	2
557026-1378	78286	25	1	1-4TYPEFFORMUBBLACK	81349	27	5
SS7026-1379	78286	25	4	1-4TYPEFFORMUBBLACK	81349	28	S
SS7026-1380	78286	26	3	1-4TYPEFFORMU8LACK	81349	29	5
SS7026-1381	78286	26	4	1-4TYPEFFORMUBBLACK	81349	30	5
SS7026-1382	78286	27	3	1-4TYPEFFORMUBBLACK	81349	32	6
557026-1383	78286	27	4	1-4TYPEFFORMUBBLACK	81349	33	5
557026-1384	78286	28	3	1-4TYPEFFORMUBBLACK	81349	36	4
SS7026-1385	78286	28	4	1-8TYPEFFORMUBBLACK	81349	23	10
557026-1386	78286	29	3	1N2974	03877	4	40
SS7026-1386	78286	30	3	1N2974R	03877	4	41
5S7026-1387	78286	29	4	1N29798	03877	4	36
SS7026-1388	78286	30	4	IN3996	24444	19	6
SS7026-1389	78286	31	1	IN645	81349	14	14
SS7026-1390	78286	31	4	IN645	81349	16	5
S57026-1391	78286	32	3	10-37093-141	77820	19	30
57026-1392	78286	32	5	10-37093-141	77820	6	16
SS7026-1393	78286	33	1	10-37093-141	77820	15	9
5S7026-1394	78286	33	4	10-37093-201	77820	15	19
557026-1395	78286	34	3	10-37093-241	77820	12	35
SS7026-1396	78286	34	4	101240AP	07047	21	9
557026-1397	78286	35	1	10124DAP	07047	22	10
SS7026-1398	78286	35	4	10135DAP	07047	21	18
SS7026-1717	78286	23	6	10135DAP	07047	22	19
SS7026-1718	78286	23	14	10250N	07047	8	4
SS7026-1719	78286	24	6	1240-3	71279	15	18
557026-1720	78286	25	6	1255-1-14	71219	12	29
S57026-1721	78286	26	6	1255-1-14	71279	19	15
SS7026-1722	78286	27	9	1293-1	71279	12	21
SS7026-1723	78286	27	7	1339	06540	15	23
55S7026-1724	78286	36	5	1724-3	71279	4	88
SS7026-1725	78286	29	6	1724-3	71279	12	17
557026-1726	78286	30	6	1724-3	71279	12	41
SS7026-1727	78286	31	6	1724-3	71279	16	6
SS7026-1728	78286	32	10	18	70485	12	3
557026-1729	78286	32	8	18	70485	19	37
SS7026-1730	78286	33	6				
557026-1731	78286	35	6				
S57026-1732	78286	34	6				
557026-1745	78286	28	6				
SS7026-1746	78286	36	3	1989-1	71279	4	29
SS7026-1747	78286	36	1	2N2603A	81349	14	16
SS7073-1800	78286	23	15	2N2647	80131	21	16
557073-1801	78286	27	10	2N2647	80131	22	17
557073-1801	78286	32	1	2N4036	80131	21	17
SS9013-230	78286	11	2	2N4036	80131	22	18
559013-567	78286	10	1	2N4393	80131	8	3
559063-024	78286	12	19	2N760A	81349	14	15
SS9063-025	78286	15	14	2N760A	81349	14	20
S59063-026	78286	19	12				
SS9063-027	78286	6	19	2004-2	71279	21	15
SS9064-023	78286	3	4	2004-2	71279	22	16
56170-90143-14	78286	4	6	212-12S	71286	6	17
56170-90143-14	78286	12	8	2600-75	712d6	11	10

NATIONAL STOCK NUMBER AND PART NUMBER INDEX

PART NUMBER	FSCM	FIG. NO.	ITEM NO.	PART NUMBER	FSCM	FIG. NO.	ITEM NO.
2600SW	71286	11	9	6670-90163-041	78286	12	34
27067	92219	5	8	6470-90164-101	78286	12	15
27067	92219	18	8	6470-90164-102	78286	12	1
3-4TYPEFFORMUBLACK	81349	17	1	6470-90165-101	78286	12	32
3-4TYPEFFORMUBLACK	81349	25	5	6470-90166-041	78286	12	40
3-8TYPEFFORMUBLACK	81349	17	5	6470-90166-042	78286	12	16
320559	00779	23	1	6470-90167-041	78286	4	8
320559	00779	24	3	6470-90167-042	78286	4	5
320559	00779	25	3	6470-90171-041	78286	15	12
320559	00779	26	2	6470-90173-101	78286	15	13
320559	00779	27	11	6470-90173-102	78286	15	1
320559	00779	28	2	6470-90174-101	78286	15	16
320559	00779	30	2	6470-90175-041	78286	15	2
320559	00779	31	3	6470-90175-042	78286	16	2
320559	00779	33	2	6470-90179-101	78286	19	7
320559	00779	34	2	6470-90181-041	78286	19	32
320559	00779	35	3	6470-90182-101	78286	19	34
320559	00779	29	1	6470-90182-102	78286	19	1
381A015-6	06090	17	7	6470-90184-041	78286	19	35
6470-90184-042	78286	19	36				
5116	23466	4	67	6470-90185-101	78286	21	4
5120	23466	4	65	6470-90185-101	78286	22	4
6002-52A	91506	4	53	6470-90193-101	78286	6	1
6470-90014-104	78286	11	6	6470-90193-102	78286	6	18
6470-90014-105	78286	11	8	6470-90194-101	78286	6	9
6470-90014-106	78286	11	3	6470-90195-041	78386	6	13
6470-90155-101	78286	4	1	6470-90195-101	78286	8	7
6470-90155-102	78286	4	37	6470-90197-041	78286	6	b
6470-90156-041	78286	4	55	65700-90022-041	78286	4	9
6470-90156-042	78286	4	86	65700-90022-041	78286	12	22
6470-90156-043	78286	4	48	65700-90022-041	78286	15	11
6470-90159-041	78286	4	63	65700-90022-041	78286	19	16
6470-90159-041	78286	15	5	65700-90570-042	78286	17	8
6470-90159-101	78286	5	4	65700-90573-042	78286	11	
	15						
6470-90159-101	78286	18	4	68G83-4A552	98927	4	87
6470-90159-101	78286	19	14	741HM	07263	8	8
6470-90161-101	78286	12	30	79NE040	72962	11	7
6470-90161-101	78286	19	25	8546A0832-18	06540	4	30
6470-90161-102	78286	12	27				

LATEST NATIONAL STOCK NUMBER ASSIGNMENTS

STOCK NUMBER	FIG. NO.	ITEM NO.	STOCK NUMBER	FIG. NO.	ITEM NO.
6145-00-016-8768	17	10	5340-00-571-9317	5	3
5925-00-054-0177	15	39	5340-00-571-9317	18	3
5305-00-063-3503	4	15	5365-00-598-5287	23	12
9905-00-136-9054	12	19	5365-00-598-5394	23	7
9905-00-136-9055	6	19			
9905-00-138-5611	19	12	5340-00-632-3102	4	46
5940-00-177-7974	7	2	5930-00-655-1582	4	75
5940-00-177-7974	13	1	5930-00-655-1582	12	7
5940-00-177-7974	17	3			
5940-00-177-7974	20	2	5340-00-684-5984	4	60
6625-00-197-6392	2	1			
5935-00-232-2629	19	22			
5940-00-232-5209	29	1			
5995-00-235-5050	1	11	6145-00-734-4554	17	16
5995-00-235-5055	1	13			
5995-00-235-5065	1	12	6625-00-760-6118	1	9
6625-00-760-6125	1	10			
6625-00-238-9405	4	1	6625-00-760-6129	1	14
6625-00-249-4433	9	2	6625-00-760-6130	1	15
6615-00-249-4444	9	5	6625-00-760-6135	1	16
6615-00-249-4448	9	3	6625-00-760-6136	1	3
6625-00-407-7130	1	1	6625-00-760-6139	1	4
6625-00-409-1001	9	4	6625-00-760-6141	1	5
5935-00-415-0981	19	28	5961-00-764-3167	21	16
5970-00-431-6735	27	10	5961-00-764-3167	22	17
5970-00-431-6735	32	1	5950-00-805-4019	4	69
5970-00-431-6736	23	15	5935-00-850-5652	12	31
6625-00-439-4204	12	15	4920-00-879-6548	9	6
5995-00-449-0716	1	6	5940-00-903-4571	17	3
5935-00-450-8624	19	21			
5935-00-450-8625	19	27	5970-00-936-8577	17	7
5935-00-450-8629	19	26			
5962-00-455-0883	21	6	5961-00-950-6588	19	6
6615-00-465-1746	1	8	5307-00-955-6204	11	11
5340-00-542-0905	4	52	5335-00-985-6888	6	7

NATIONAL STOCK NUMBER AND PART NUMBER INDEX

LATEST PART NUMBER ASSIGNMENTS

PART NUMBER	FSCM	FIG. NO.	ITEM NO.	PART NUMBER	FSCM	FIG. NO.	ITEM NO.
CY-6962/ASM-417	80058	9	4	MT-3969/ASM-329	80058	9	6
MS24693S50	96906	4	15	MX-8840/ASM-417	80058	9	3
MS77070-1	96906	7	2	OQ-93/ASM-417	80058	1	1
MS77070-1	96906	13	1	OQ-94/ASM-417	80058	1	2
MS77070-1	96906	17	3	PT06SE12-8PSR	77820	36	6
MS77070-1	96906	20	2	TS-3030/ASM-417	80058	2	2

ADDITIONAL LATEST NATIONAL STOCK NUMBER ASSIGNMENTS

STOCK NUMBER	FIG. NO.	ITEM NO.	STOCK NUMBER	FIG. NO.	ITEM NO.
5961-00-068-1985	21	17	5935-00-578-3489	6	2
5961-00-068-1985	22	18	5935-00-578-3489	12	43
5961-00-107-2739	8	3	5935-00-578-3489	15	27
5310-00-183-4404	4	47	5935-00-578-3489	19	39
5310-00-183-4404	12	36	5935-00-677-2654	36	6
5935-00-513-1775	12	35	5365-00-756-0989	6	5
5935-00-578-3489	4	101	5935-00-768-4232	15	26

ADDITIONAL LATEST PART NUMBER ASSIGNMENTS

PART NUMBER	FSCM	FIG. NO.	ITEM NO.	PART NUMBER	FSCM	FIG. NO.	ITEM NO.
CO-02MGE2-14-0400	81349	17	16	2VH10-1AB5	05574	12	23
CO-03MDF3-18-0340	81349	17	10	5-1098	58474	4	69
FHS0420-10	46384	11	11	90-8WL2G	94144	6	7
US5473A	56289	21	6				

RECOMMENDED CHANGES TO EQUIPMENT TECHNICAL PUBLICATIONS



THEN... JOT DOWN THE DOPE ABOUT IT ON THIS FORM, CAREFULLY TEAR IT OUT, FOLD IT AND DROP IT IN THE MAIL!

SOMETHING WRONG WITH THIS PUBLICATION?

FROM: (PRINT YOUR UNIT'S COMPLETE ADDRESS)

DATE SENT

PUBLICATION NUMBER

PUBLICATION DATE

PUBLICATION TITLE

BE EXACT... PIN-POINT WHERE IT IS

PAGE NO.	PARA-GRAPH	FIGURE NO.	TABLE NO.
----------	------------	------------	-----------

IN THIS SPACE TELL WHAT IS WRONG AND WHAT SHOULD BE DONE ABOUT IT:

TEAR ALONG PERFORATED LINE

PRINTED NAME, GRADE OR TITLE, AND TELEPHONE NUMBER

SIGN HERE:

DA FORM 2028-2
1 JUL 79

PREVIOUS EDITIONS
• ARE OBSOLETE.

P.S.—IF YOUR OUTFIT WANTS TO KNOW ABOUT YOUR RECOMMENDATION MAKE A CARBON COPY OF THIS AND GIVE IT TO YOUR HEADQUARTERS.

By order of the Secretary of the Army:

E. C. MEYER
General, United States Army
Chief of Staff

Official:

J. C. PENNINGTON
Major General, United States Army
The Adjutant General

Distribution:

To be distributed in accordance with DA Form 12-31, Avionics Configuration literature requirements for CH-54B Aircraft.

PIN: 018654-000